

VIRGINIA ELECTRIC & POWER CO.
YORKTOWN DISTRIBUTION

PLAT TO ACCOMPANY RIGHT-OF-WAY AGREEMENT WITH AS SHOWN

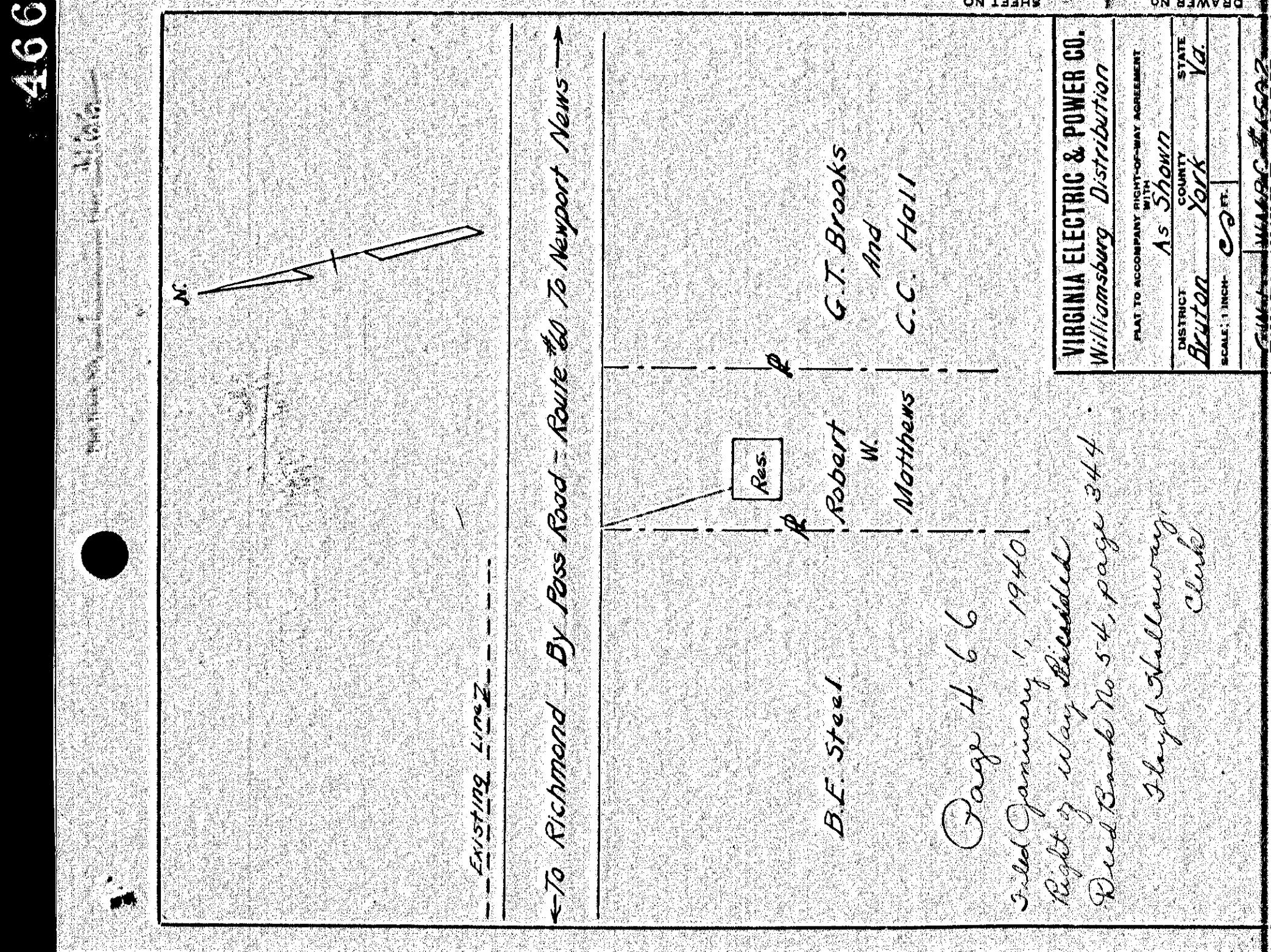
DISTRICT NELSON COUNTY YORK VA

SCALE: 1 INCH = 40 FT. OCT. 10, 1938.

SURVEYED BY C.L.S. WMBG #1394.

Page 464
Filed January 1, 1940
Right of Way Recorded
Deed Book No 54, page 341
Iloyd Holloway,
Clerk.

464



VIRGINIA ELECTRIC & POWER CO.
Williamsburg Distribution

PLAT TO ACCOMPANY RIGHT-OF-WAY AGREEMENT WITH AS SHOWN

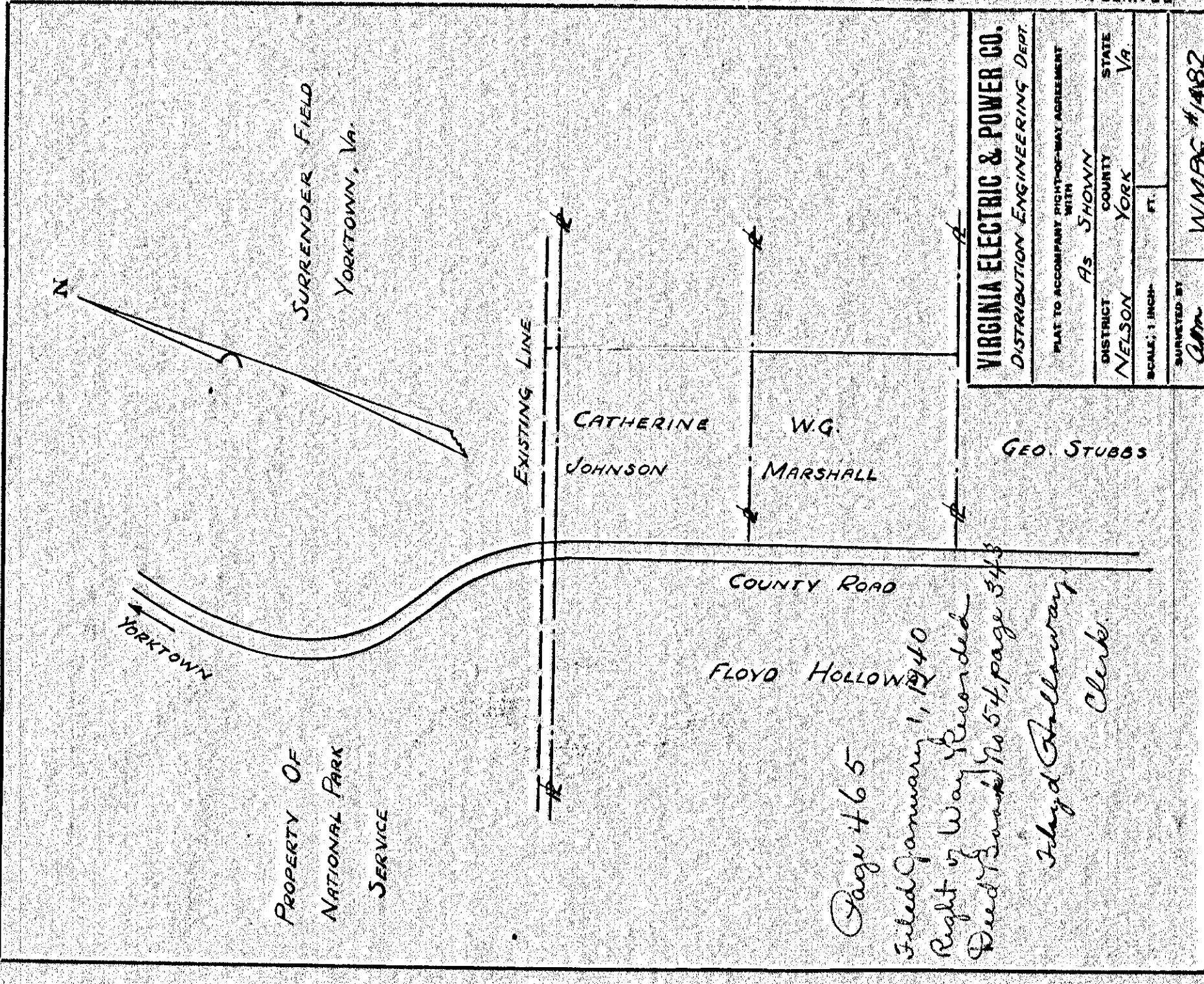
DISTRICT BRITTON COUNTY YORK VA

SCALE: 1 INCH = 80 FT.

SURVEYED BY C.L.S. WMBG #1394.

Page 466
Filed January 1, 1940
Right of Way Recorded
Deed Book No 54, page 344
Iloyd Holloway,
Clerk.

466



VIRGINIA ELECTRIC & POWER CO.
DISTRIBUTION ENGINEERING DEPT.

PLAT TO ACCOMPANY RIGHT-OF-WAY AGREEMENT WITH AS SHOWN

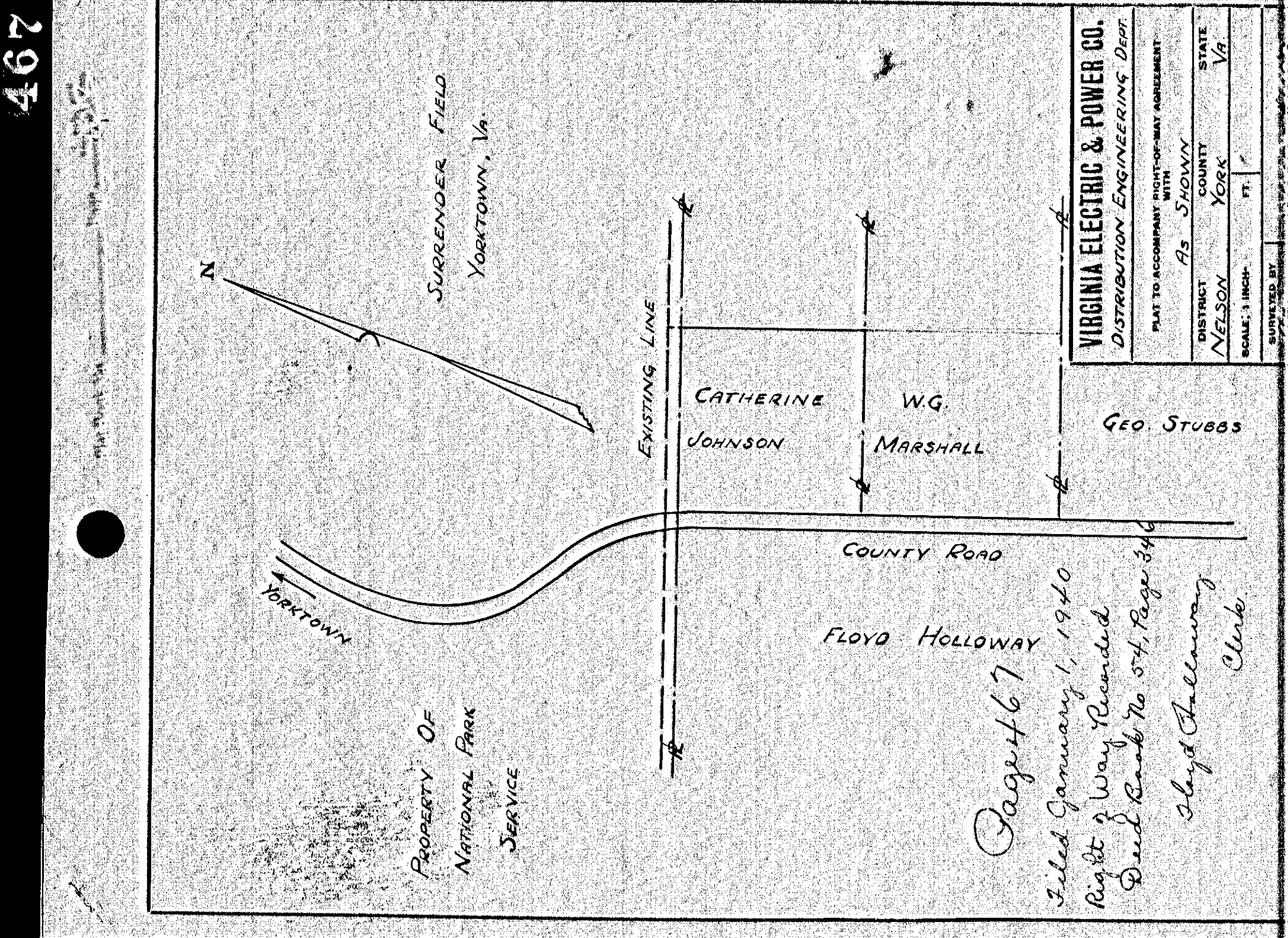
DISTRICT NELSON COUNTY YORK VA

SCALE: 1 INCH = 40 FT.

SURVEYED BY C.L.S. WMBG #1482.

Page 465
Filed January 1, 1940
Right of Way Recorded
Deed Book No 54, page 343
Iloyd Holloway,
Clerk.

465



VIRGINIA ELECTRIC & POWER CO.
DISTRIBUTION ENGINEERING DEPT.

PLAT TO ACCOMPANY RIGHT-OF-WAY AGREEMENT WITH AS SHOWN

DISTRICT NELSON COUNTY YORK VA

SCALE: 1 INCH = 40 FT.

SURVEYED BY C.L.S. WMBG #1482.

Page 467
Filed January 1, 1940
Right of Way Recorded
Deed Book No 54, Page 346
Iloyd Holloway,
Clerk.

467