

**VIRGINIA ELECTRIC & POWER CO.**  
 Williamsburg Distribution  
 PLAT TO ACCOMPANY RIGHT-OF-WAY AGREEMENT  
 AS SHOWN  
 DISTRICT NELSON YORK VIRGINIA  
 SCALE: 1"=50'  
 C.W.L. WMBG #1562

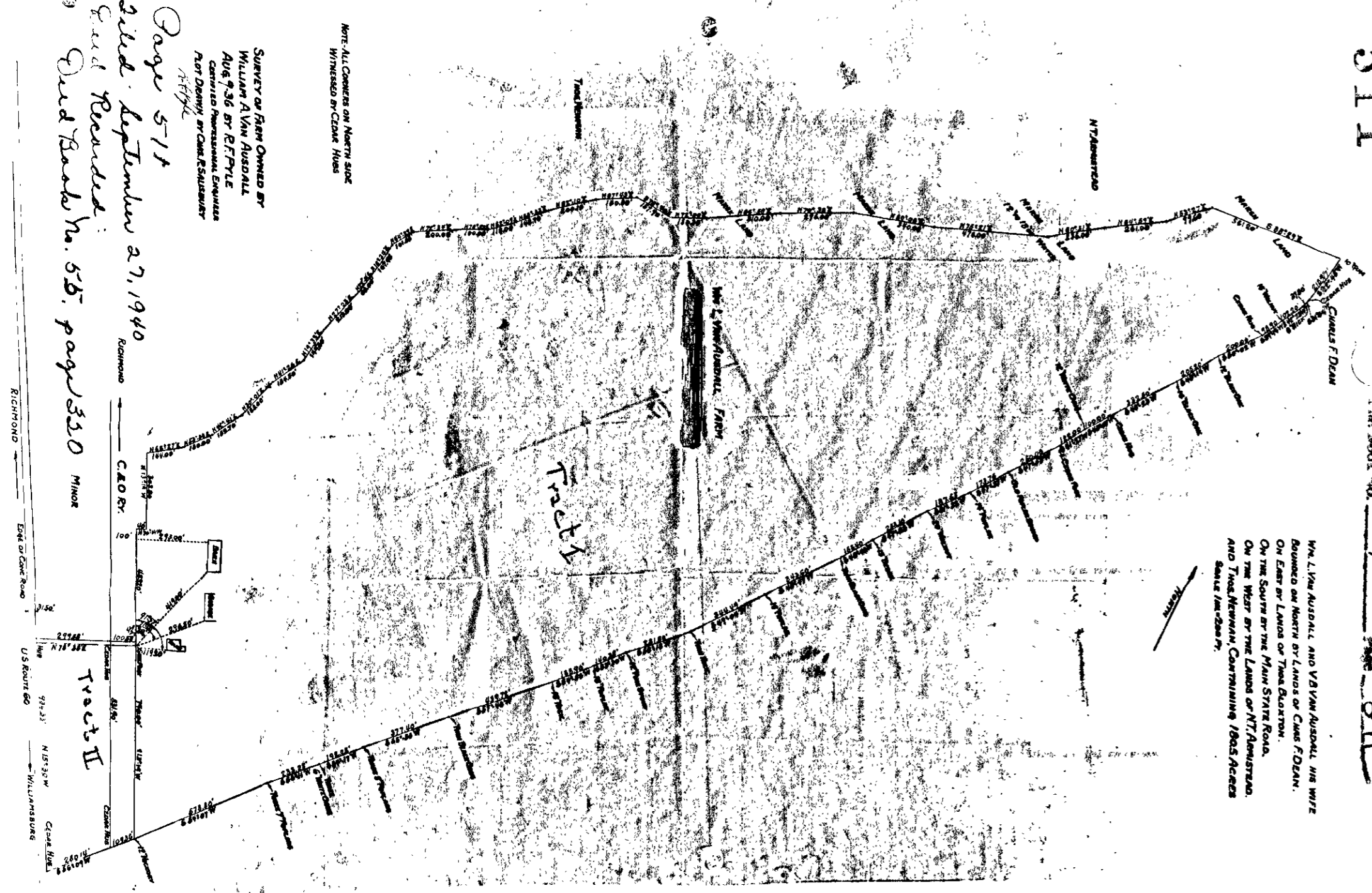
DRAWER NO. SHEET NO.

509

511

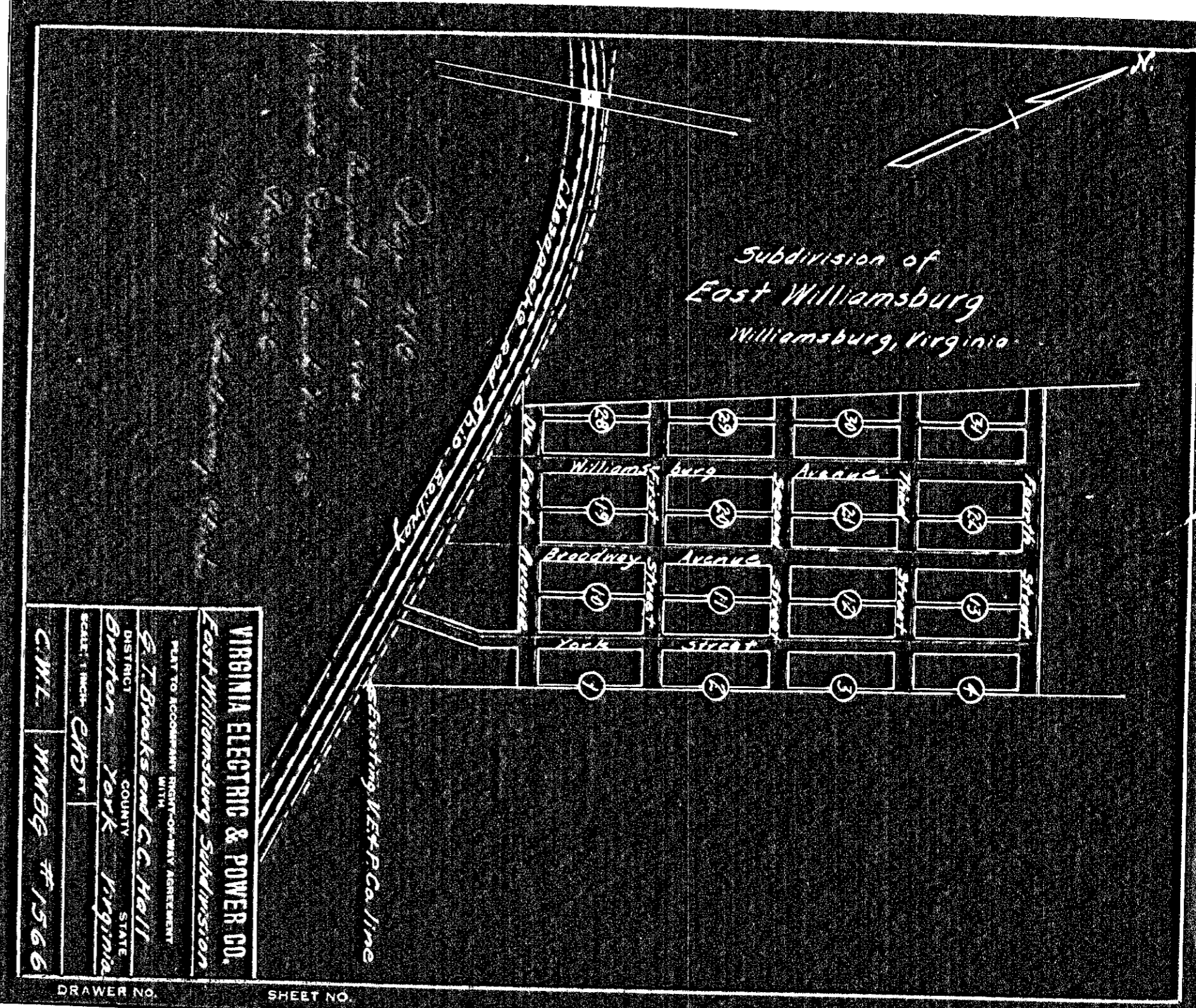
Plat Book No. 1 Page 511

W. L. ALVUS AUDELL AND V. W. AUDELL, JR. WITH  
 BENJAMIN AUDELL, JR. PARTNERS  
 OWNERS OF LANDS OF THE FARM  
 ON THE EAST BY THE LANDS OF THE FARM  
 ON THE SOUTH BY THE MAIN STATE ROAD  
 ON THE WEST BY THE LANDS OF MR. AUDELL  
 AND THE NEWMAN, CONTAINING 186.5 ACRES  
 MORE OR LESS



Survey of Farm Owned by  
 William Alvin Audell  
 Aug 9, 36 by R.F. PYLE  
 Certified Professional Engineer  
 and Deputy State Surveyor  
 Page 511  
 Filed September 27, 1940  
 and Reopened  
 Plat Book No. 55, page 530

510



**VIRGINIA ELECTRIC & POWER CO.**  
 East Williamsburg Subdivision  
 PLAT TO ACCOMPANY RIGHT-OF-WAY AGREEMENT  
 WITH  
 G. T. BROOKS AND C. C. HELL  
 DISTRICT BRANTON YORK VIRGINIA  
 SCALE: 1"=50'  
 C.W.L. WMBG #1566

DRAWER NO. SHEET NO.