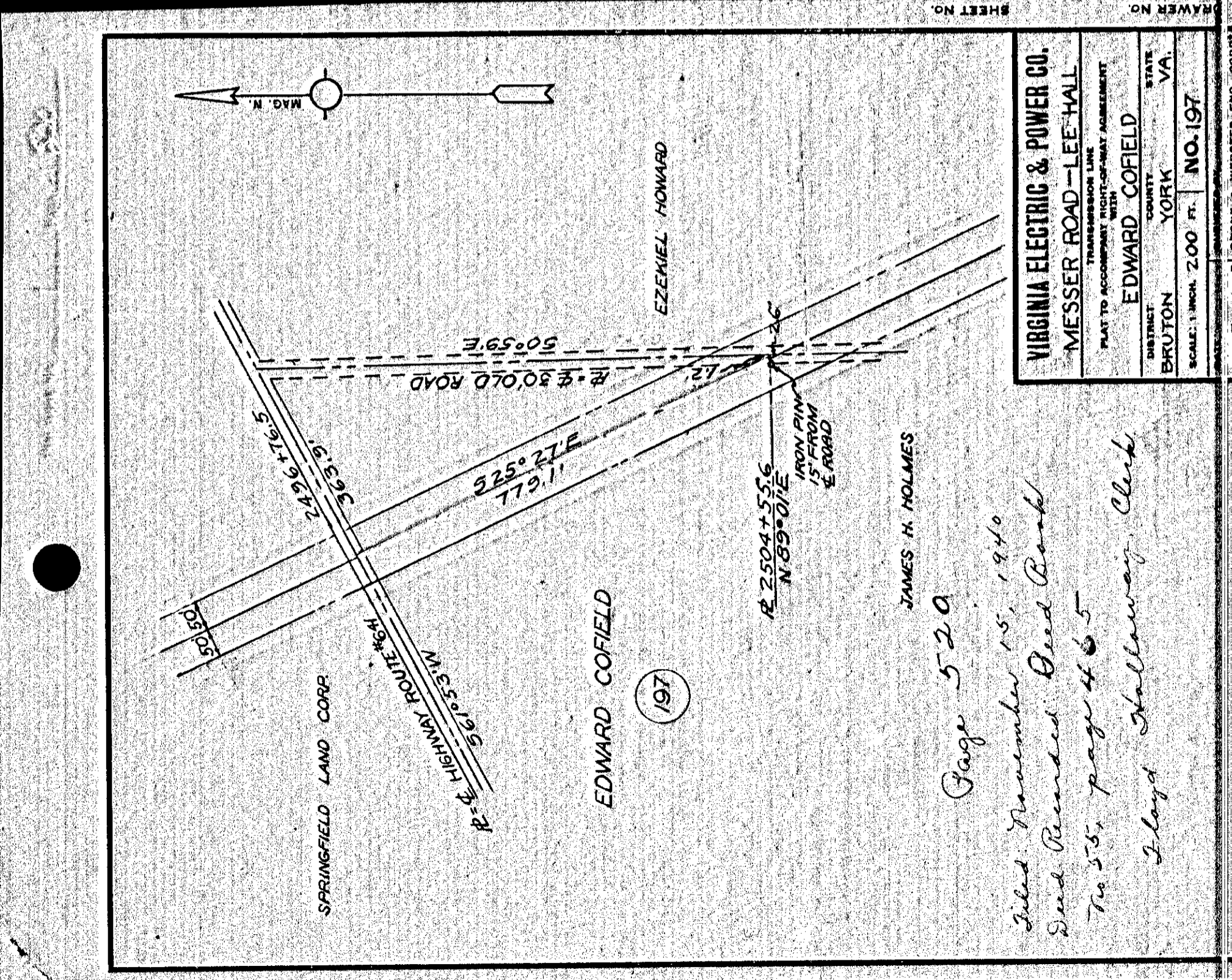


VIRGINIA ELECTRIC & POWER CO.
MESSER ROAD-LEE HALL
 PLAT TO ACCOMPANY RIGHT-OF-WAY AGREEMENT
 TRANSMISSION LINE
 DISTRICT: BRUTON COUNTY YORK STATE VA.
 SCALE: 1 INCH = 200 FT. NO. 204
 DATE: OCT. 1940 SURVEYED BY STONE & WEBSTER ENG. CORP.

Page 518
 Filed November 15, 1940 Deed Recorded
 Deed Book No. 55, page 460.
 Floyd Hallaway Clerk

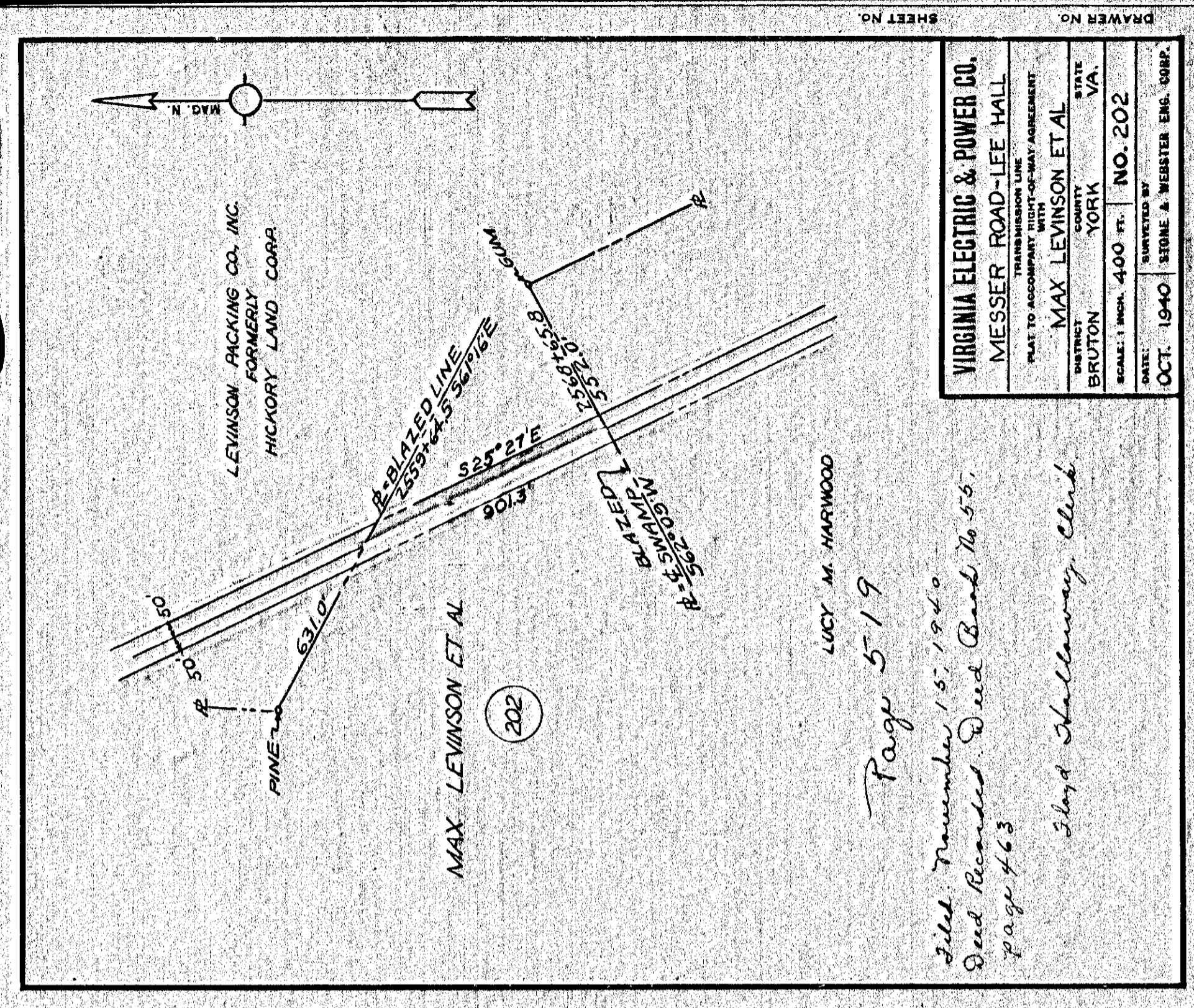
518

520



VIRGINIA ELECTRIC & POWER CO.
MESSER ROAD-LEE HALL
 PLAT TO ACCOMPANY RIGHT-OF-WAY AGREEMENT
 TRANSMISSION LINE
 DISTRICT: BRUTON COUNTY YORK STATE VA.
 SCALE: 1 INCH = 200 FT. NO. 197
 DATE: OCT. 1940 SURVEYED BY STONE & WEBSTER ENG. CORP.

Page 520
 Filed November 15, 1940
 Deed Recorded Deed Book
 No. 55, page 465
 Floyd Hallaway Clerk

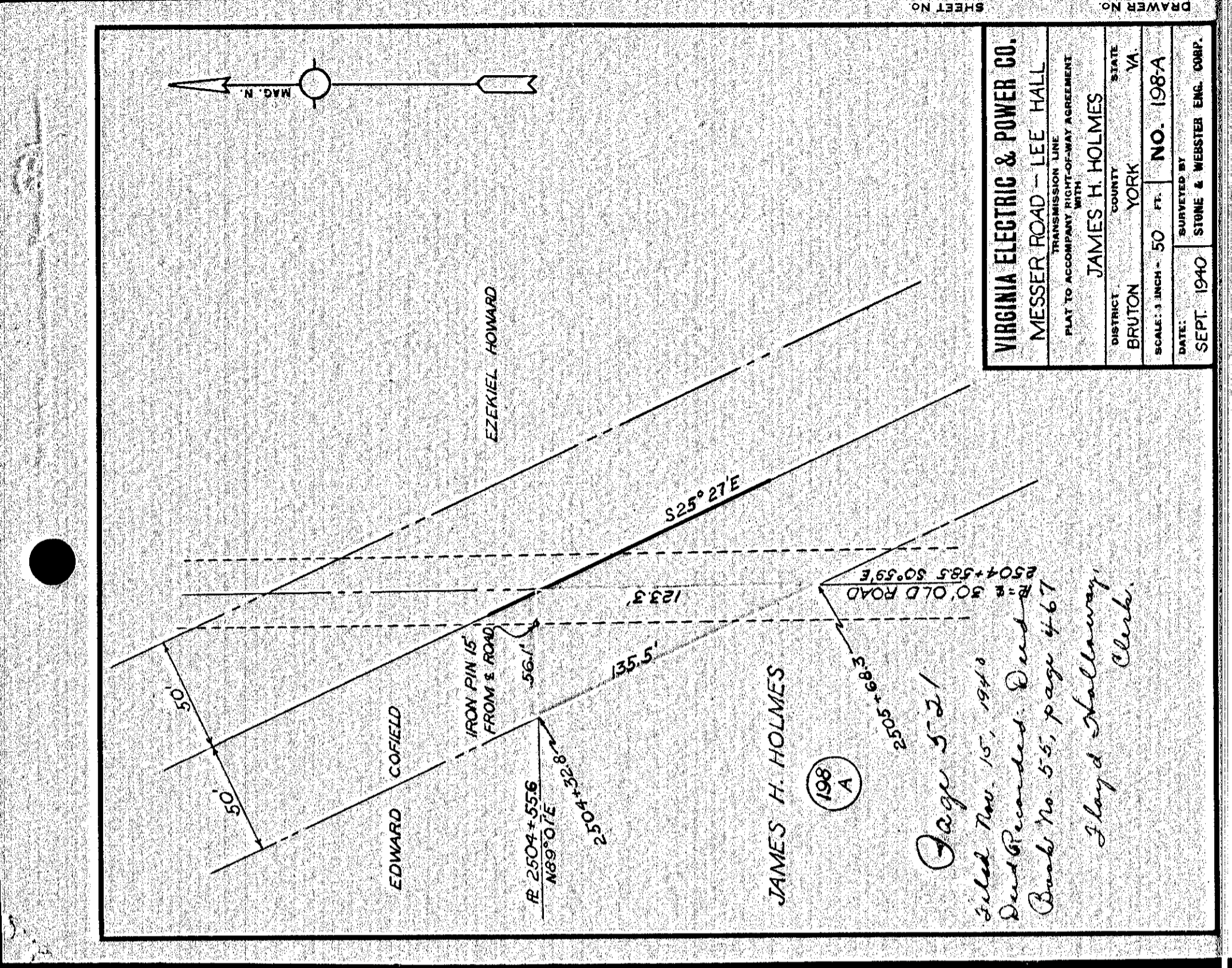


VIRGINIA ELECTRIC & POWER CO.
MESSER ROAD-LEE HALL
 PLAT TO ACCOMPANY RIGHT-OF-WAY AGREEMENT
 TRANSMISSION LINE
 DISTRICT: BRUTON COUNTY YORK STATE VA.
 SCALE: 1 INCH = 400 FT. NO. 202
 DATE: OCT. 1940 SURVEYED BY STONE & WEBSTER ENG. CORP.

Page 519
 Filed November 15, 1940
 Deed Recorded Deed Book No. 55,
 page 463
 Floyd Hallaway Clerk

519

521



VIRGINIA ELECTRIC & POWER CO.
MESSER ROAD-LEE HALL
 PLAT TO ACCOMPANY RIGHT-OF-WAY AGREEMENT
 TRANSMISSION LINE
 DISTRICT: BRUTON COUNTY YORK STATE VA.
 SCALE: 1 INCH = 50 FT. NO. 198-A
 DATE: SEPT. 1940 SURVEYED BY STONE & WEBSTER ENG. CORP.

Page 521
 Filed Nov. 15, 1940
 Deed Recorded Deed
 Book No. 55, page 467
 Floyd Hallaway Clerk

DRAWER NO. SHEET NO.

DRAWER NO. SHEET NO.