

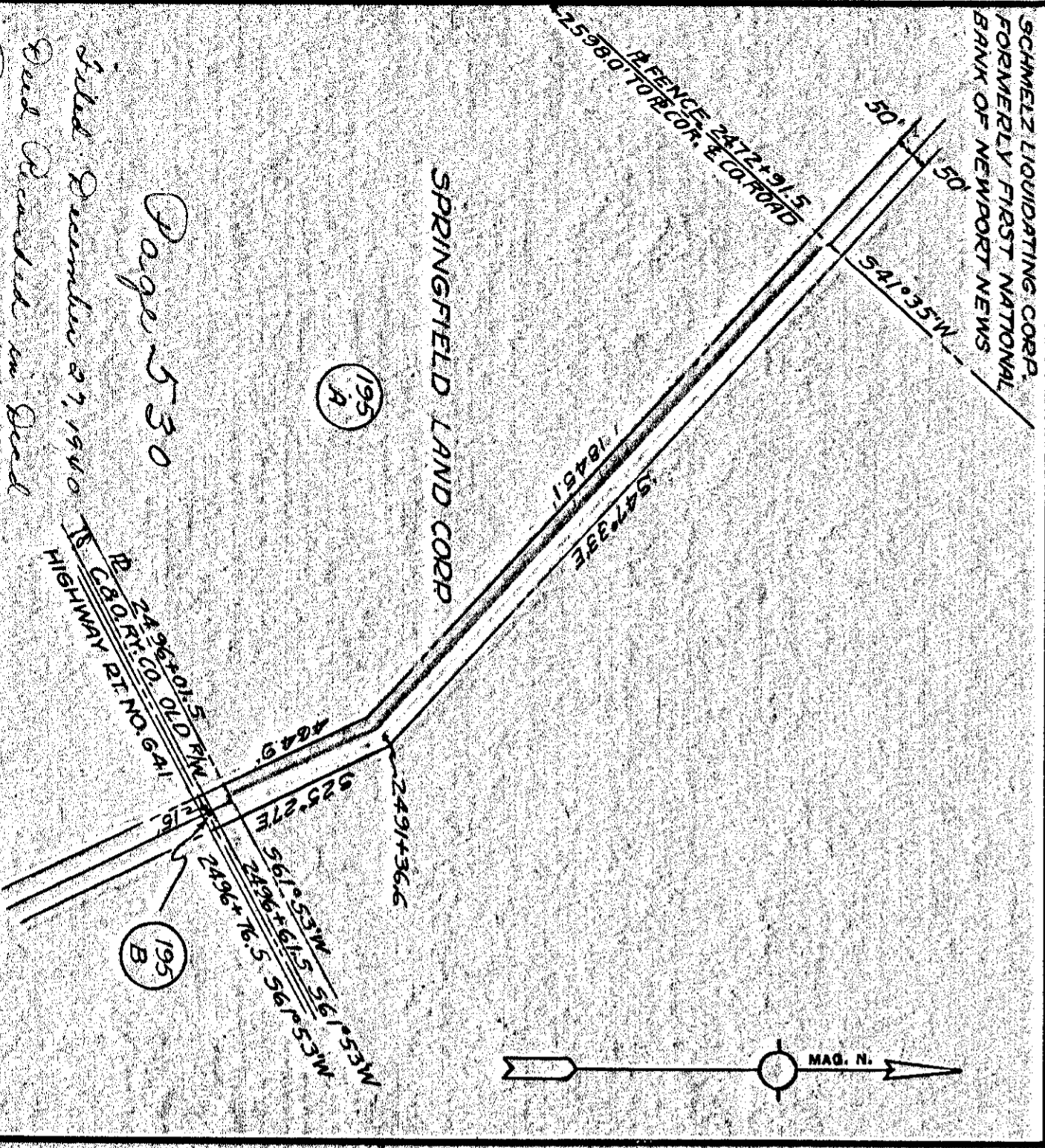
Page 528
 Filed December 18, 1940
 Book Recorded: Book LUCY MARGARET HARDWOOD
 Book No. 55, page 55-1
 Floyd Stollaway Clerk

VIRGINIA ELECTRIC & POWER CO.	
MESSER, ROAD-LEE HALL	
TRANSMISSION LINE	
PLAT TO ACCOMPANY RIGHT-OF-WAY AGREEMENT	
DISTRICT	BRUTON
COUNTY	YORK
STATE	VA.
SCALE: 1"=100'	NO. 207A/B/C
DATE: NOV. 1940	DESIGNED BY: STONE & WESTER, ENG. CONR.

DRAWER NO. SHEET NO.

528

530

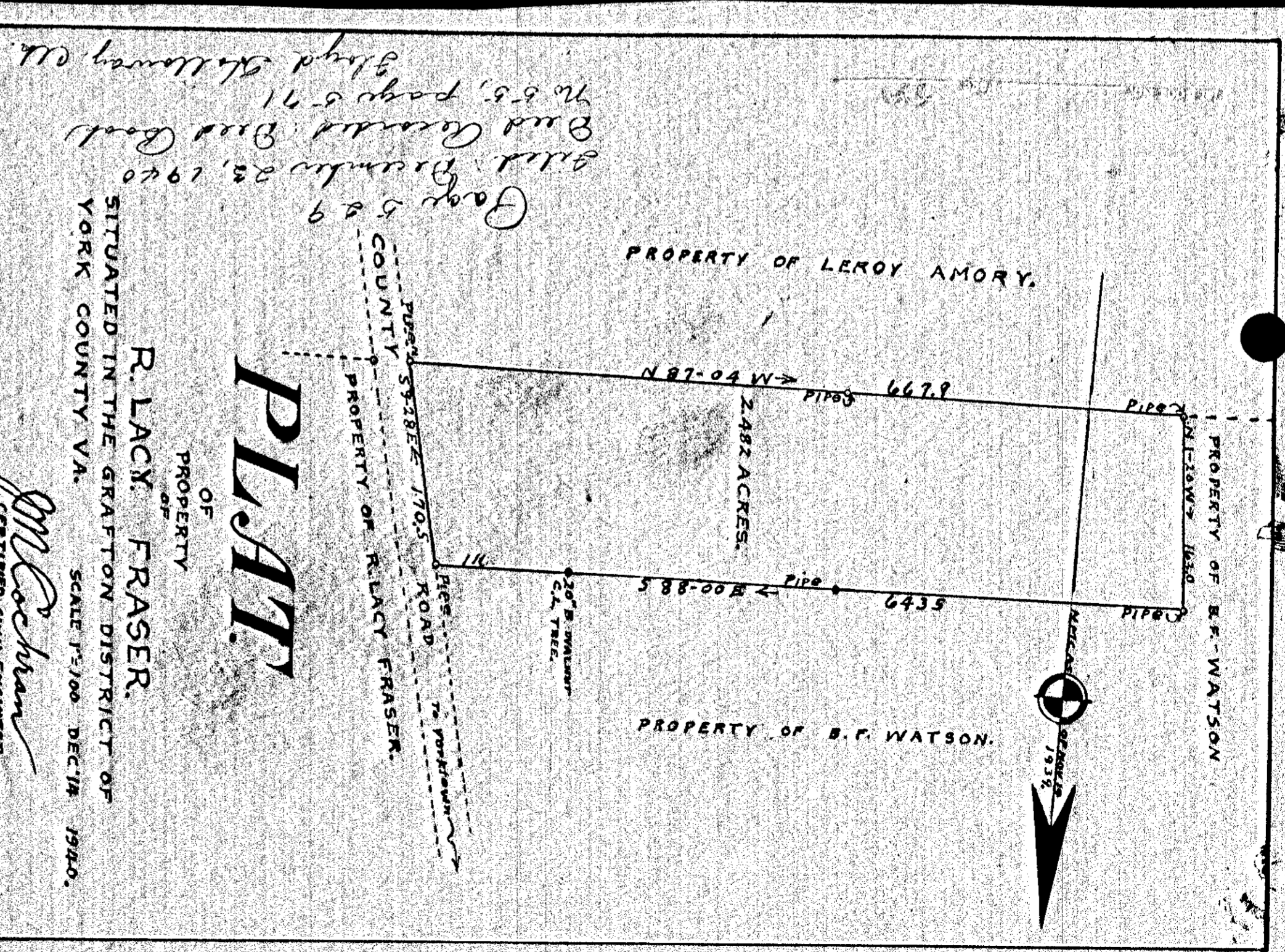


Page 530
 Filed December 3, 1940
 Book Recorded: Book
 Book No. 55, page 57-1
 Floyd Stollaway Clerk

VIRGINIA ELECTRIC & POWER CO.	
MESSER, ROAD-LEE HALL	
TRANSMISSION LINE	
PLAT TO ACCOMPANY RIGHT-OF-WAY AGREEMENT	
DISTRICT	BRUTON
COUNTY	YORK
STATE	VA.
SCALE: 1"=100'	NO. 195A
DATE: NOV. 1940	DESIGNED BY: STONE & WESTER, ENG. CONR.

DRAWER NO. SHEET NO.

530



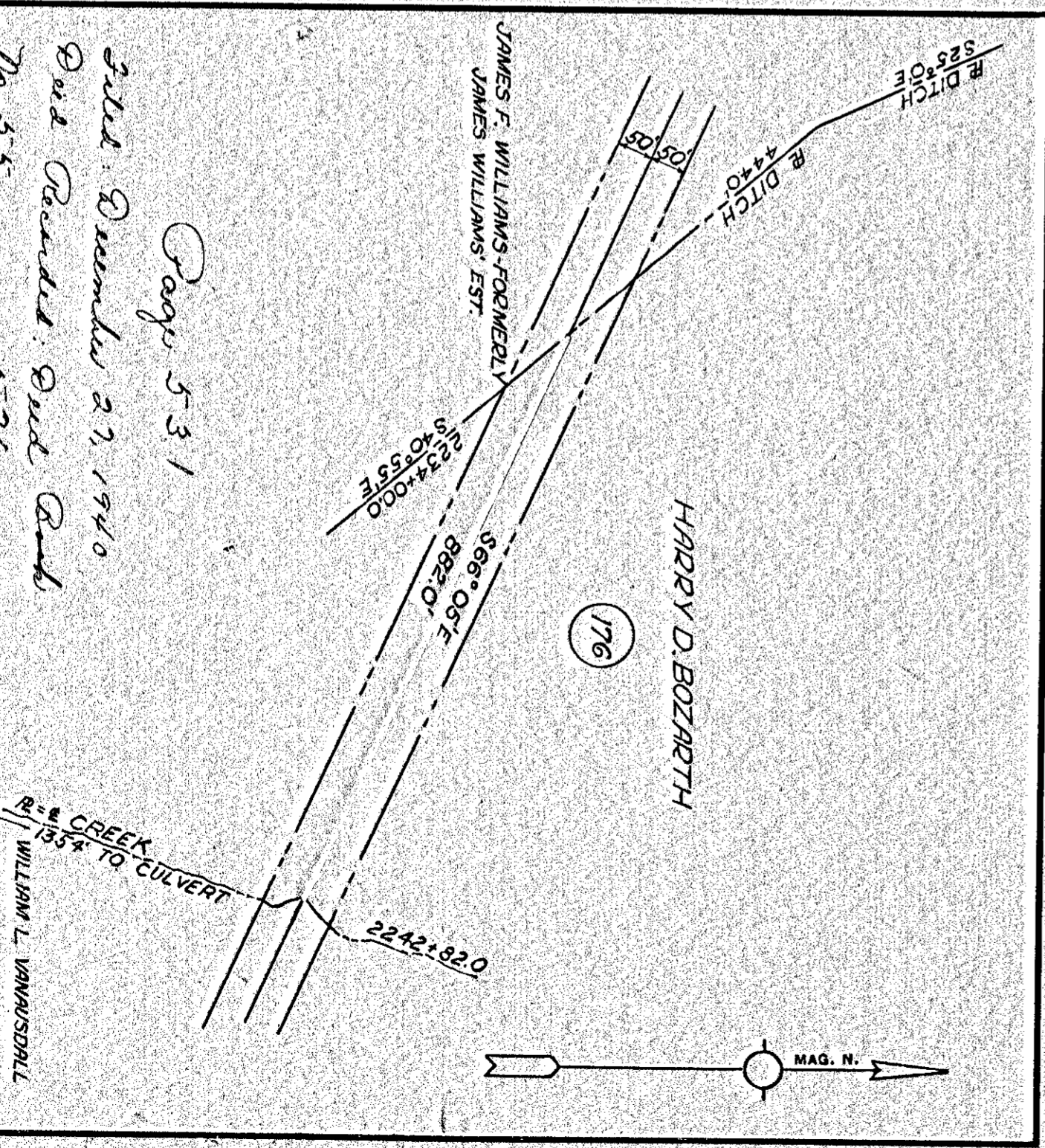
Page 529
 Filed December 23, 1940
 Book Recorded: Book Book
 Book No. 55, page 57-1
 Floyd Stollaway Clerk

PROPERTY OF R. LACY FRASER.	
SITUATED IN THE GRAFTON DISTRICT OF YORK COUNTY VA.	
SCALE 1"=100' DEC. 1940.	
DESIGNED BY: <i>Wm. Cochran</i> CERTIFIED CIVIL ENGINEER	

DRAWER NO. SHEET NO.

529

531



Page 531
 Filed December 23, 1940
 Book Recorded: Book Book
 Book No. 55, page 57-6
 Floyd Stollaway Clerk

VIRGINIA ELECTRIC & POWER CO.	
MESSER, ROAD-LEE HALL	
TRANSMISSION LINE	
PLAT TO ACCOMPANY RIGHT-OF-WAY AGREEMENT	
DISTRICT	BRUTON
COUNTY	YORK
STATE	VA.
SCALE: 1"=100'	NO. 176
DATE: OCT. 1940	DESIGNED BY: STONE & WESTER, ENG. CONR.

DRAWER NO. SHEET NO.

531