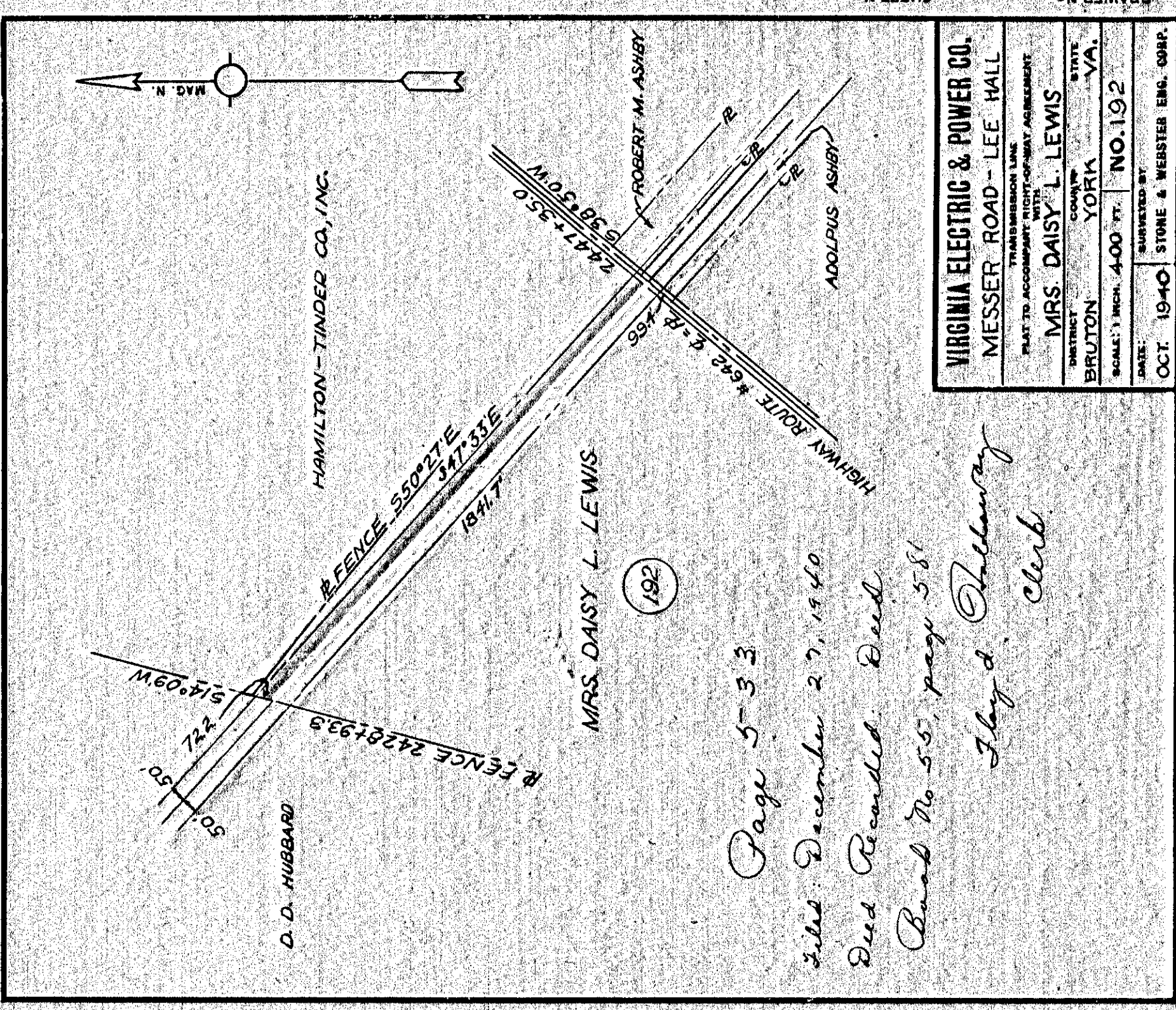


Page 532
 Filed December 27, 1940
 Deed Recorded. Deed Book
 No. 55, page 578
 Floyd Holloway
 Clerk

VIRGINIA ELECTRIC & POWER CO.
 MESSER ROAD-LEE HALL
TRANSMISSION LINE
 PLAT TO ACCOMPANY RIGHT-OF-WAY AGREEMENT
 DISTRICT BRUTON COUNTY STATE VA
 WILLIAM L. VANAUSSDALL
 NO. 177
 SCALE: 1 INCH=400 FT.
 SURVEYED BY
 OCT. 1940 STONE & WEBSTER ENG. CORP.

532

534

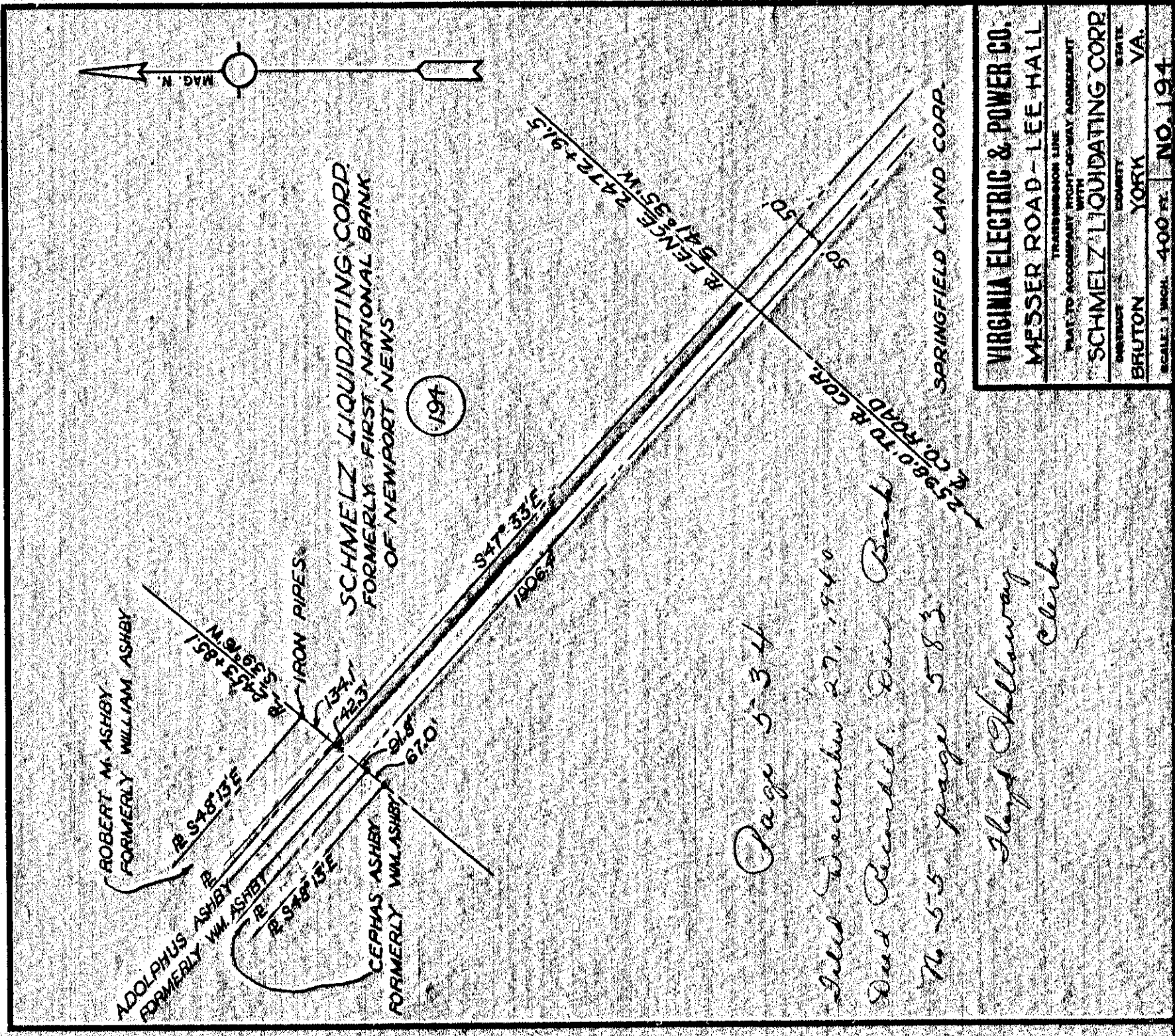


Page 533
 Filed December 27, 1940
 Deed Recorded. Deed
 Book No. 55, page 581
 Floyd Holloway
 Clerk

VIRGINIA ELECTRIC & POWER CO.
 MESSER ROAD-LEE HALL
TRANSMISSION LINE
 PLAT TO ACCOMPANY RIGHT-OF-WAY AGREEMENT
 DISTRICT BRUTON COUNTY STATE VA
 MRS. DAISY L. LEWIS
 NO. 192
 SCALE: 1 INCH=400 FT.
 SURVEYED BY
 OCT. 1940 STONE & WEBSTER ENG. CORP.

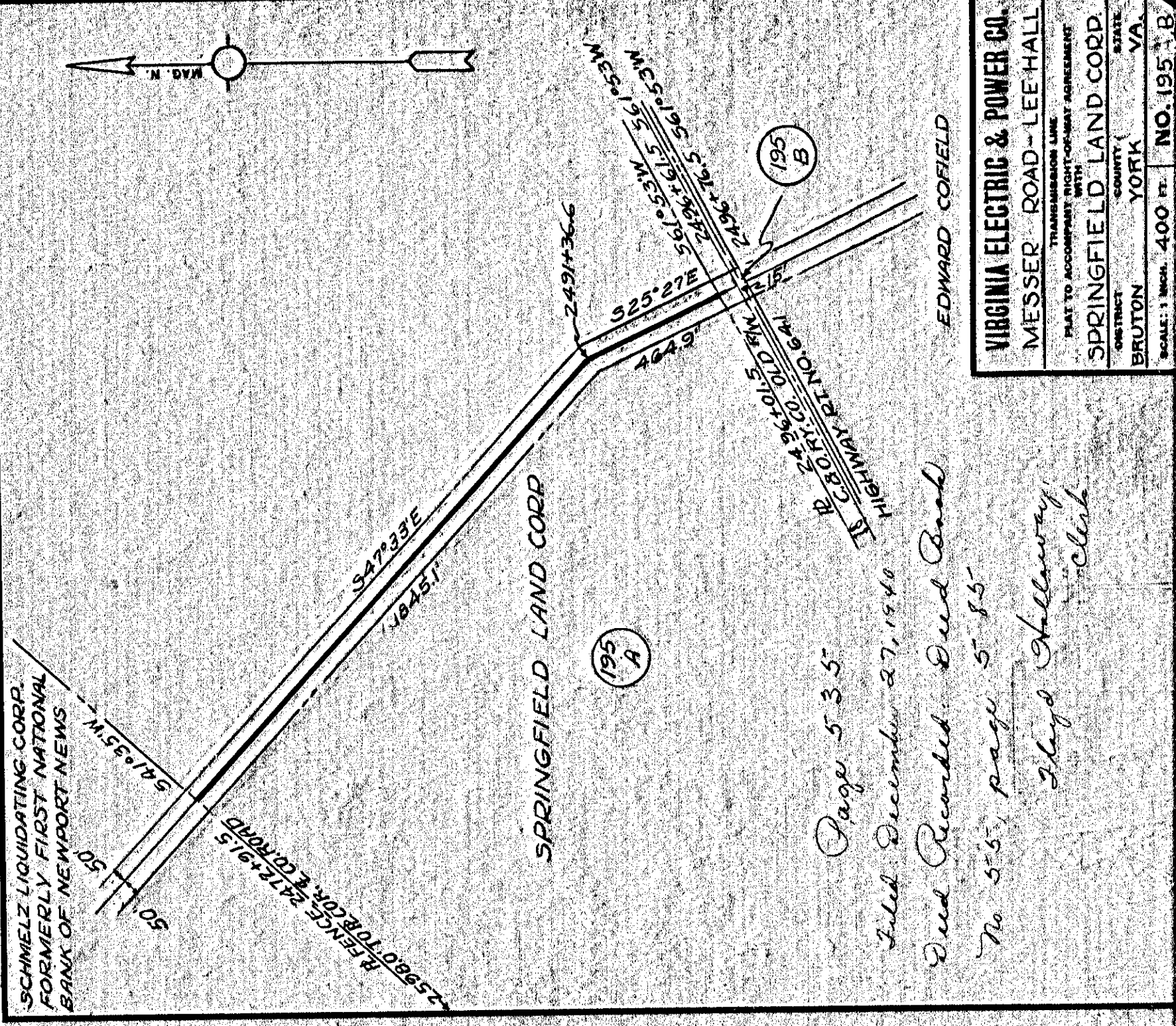
533

535



Page 534
 Filed December 27, 1940
 Deed Recorded. Deed Book
 No. 55, page 583
 Floyd Holloway
 Clerk

VIRGINIA ELECTRIC & POWER CO.
 MESSER ROAD-LEE HALL
TRANSMISSION LINE
 PLAT TO ACCOMPANY RIGHT-OF-WAY AGREEMENT
 DISTRICT BRUTON COUNTY STATE VA
 SCHMELZ LIQUIDATING CORP.
 NO. 194
 SCALE: 1 INCH=400 FT.
 SURVEYED BY



Page 535
 Filed December 27, 1940
 Deed Recorded. Deed Book
 No. 55, page 585
 Floyd Holloway
 Clerk

VIRGINIA ELECTRIC & POWER CO.
 MESSER ROAD-LEE HALL
TRANSMISSION LINE
 PLAT TO ACCOMPANY RIGHT-OF-WAY AGREEMENT
 DISTRICT BRUTON COUNTY STATE VA
 SPRINGFIELD LAND CORP.
 NO. 195
 SCALE: 1 INCH=400 FT.
 SURVEYED BY

534

535