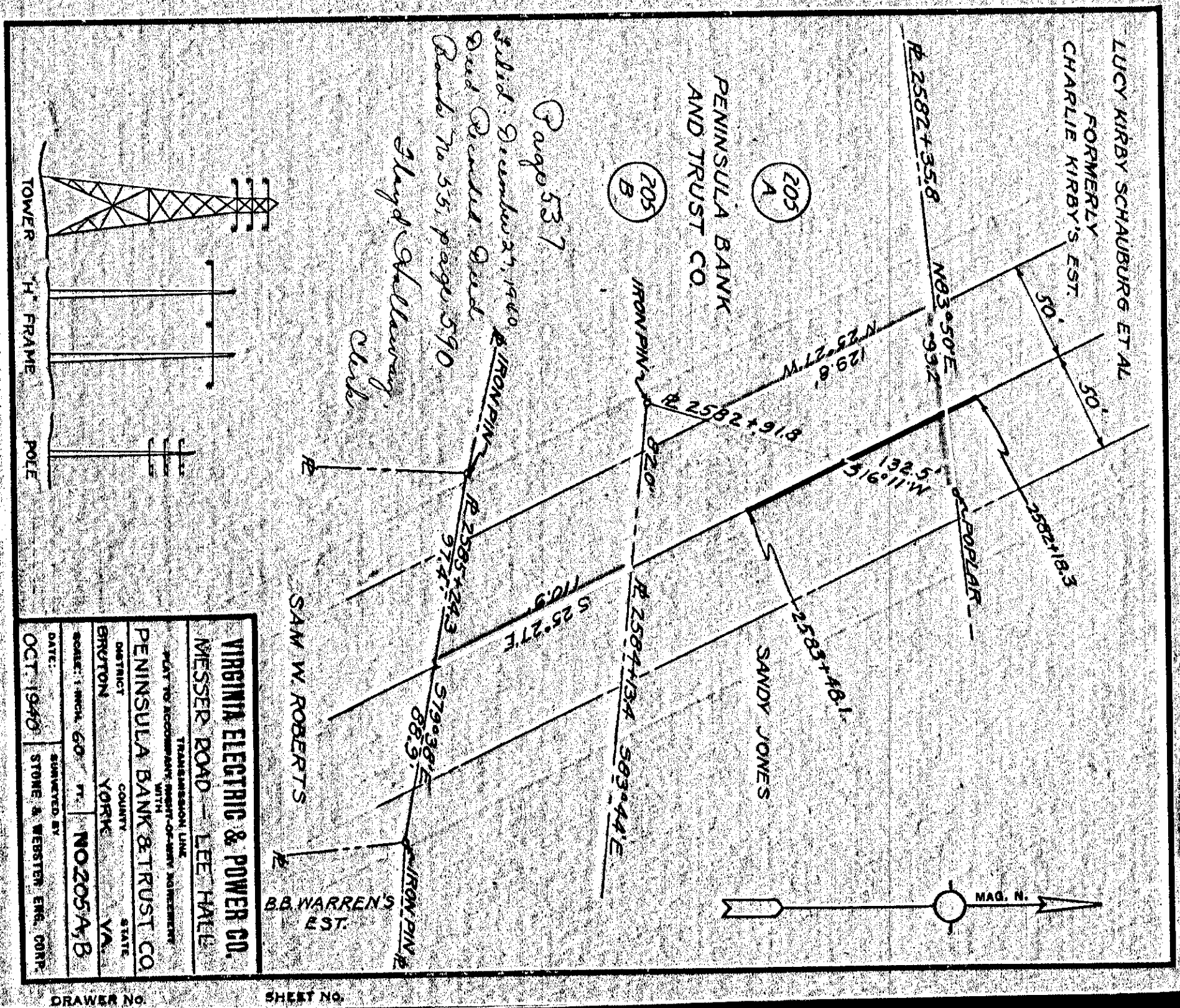


VIRGINIA ELECTRIC & POWER CO.
 MESSER ROAD - LEE HALL
 TRANSMISSION LINE
 PLAT TO ACCOMPANY WITH
 SPRINGFIELD, LAND CORP.
 DISTRICT COUNTY STATE
 BRUTON YORK VA
 SCALE: 1 INCH = 400 FT. NO. 198 B
 DATE: SEPT. 1940 SUBMITTED BY STONE & WEBSTER, ENR., CHICAGO

DRAWER NO. SHEET NO.

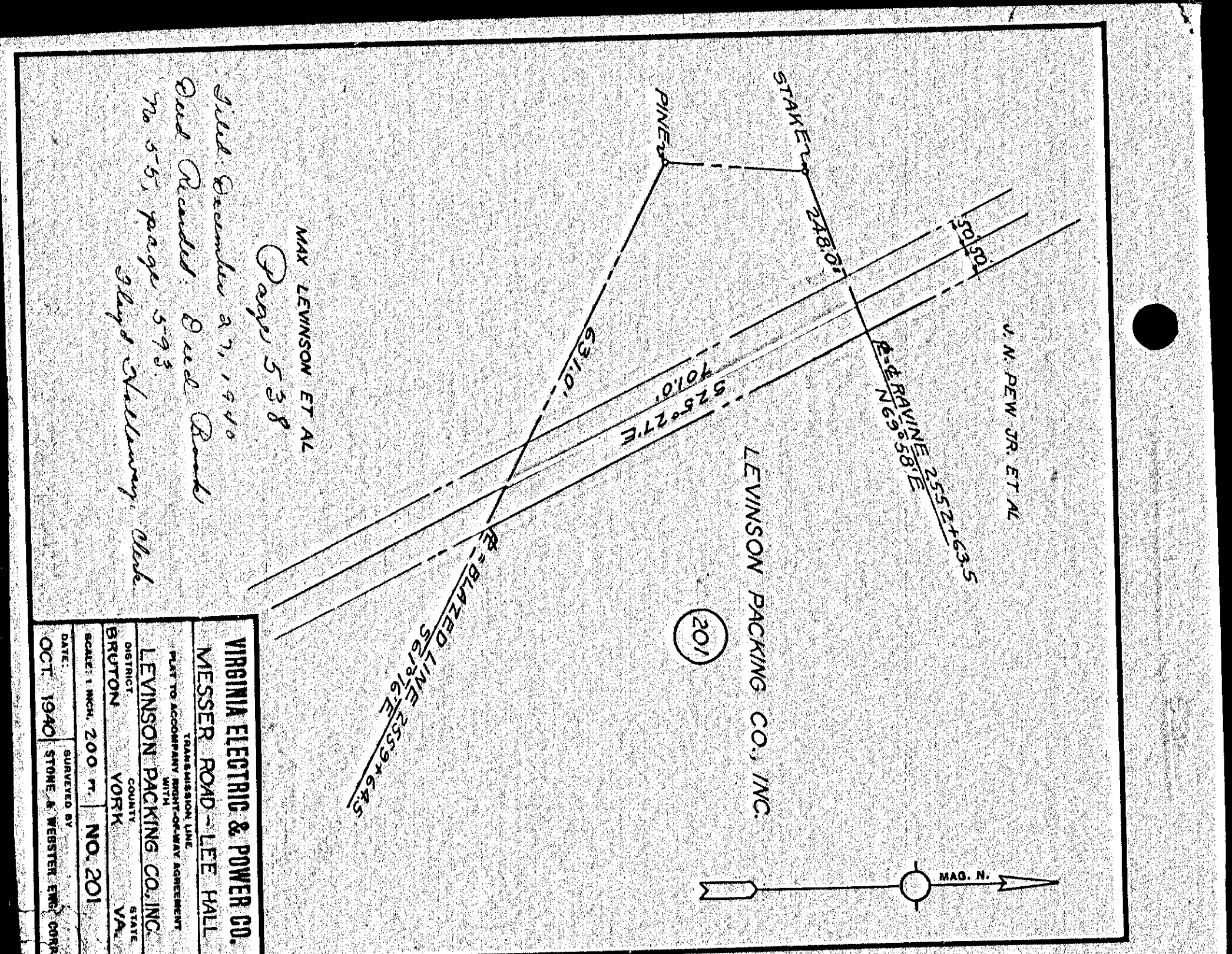
Page 536
 3d. December 27, 1940
 2d. Recorded Deed
 Book No. 53, page 587
 Shyde & McIlwainy, Clerk



VIRGINIA ELECTRIC & POWER CO.
 MESSER ROAD - LEE HALL
 TRANSMISSION LINE
 PLAT TO ACCOMPANY WITH
 PENINSULA BANK & TRUST CO.
 DISTRICT COUNTY STATE
 BRUTON YORK VA
 SCALE: 1 INCH = 60 FT. NO. 205 A/B
 DATE: OCT. 1940 SUBMITTED BY STONE & WEBSTER, ENR., CHICAGO

DRAWER NO. SHEET NO.

Page 537
 3d. December 27, 1940
 2d. Recorded Deed
 Book No. 53, page 590
 Shyde & McIlwainy, Clerk



VIRGINIA ELECTRIC & POWER CO.
 MESSER ROAD - LEE HALL
 TRANSMISSION LINE
 PLAT TO ACCOMPANY WITH
 LEVINSOON PACKING CO., INC.
 DISTRICT COUNTY STATE
 BRUTON YORK VA
 SCALE: 1 INCH = 200 FT. NO. 201
 DATE: OCT. 1940 SUBMITTED BY STONE & WEBSTER, ENR., CHICAGO

DRAWER NO. SHEET NO.

MAY LEVINSOON ET AL
 Page 538
 3d. December 27, 1940
 2d. Recorded Deed
 Book No. 55, page 593
 Shyde & McIlwainy, Clerk

536

538

537