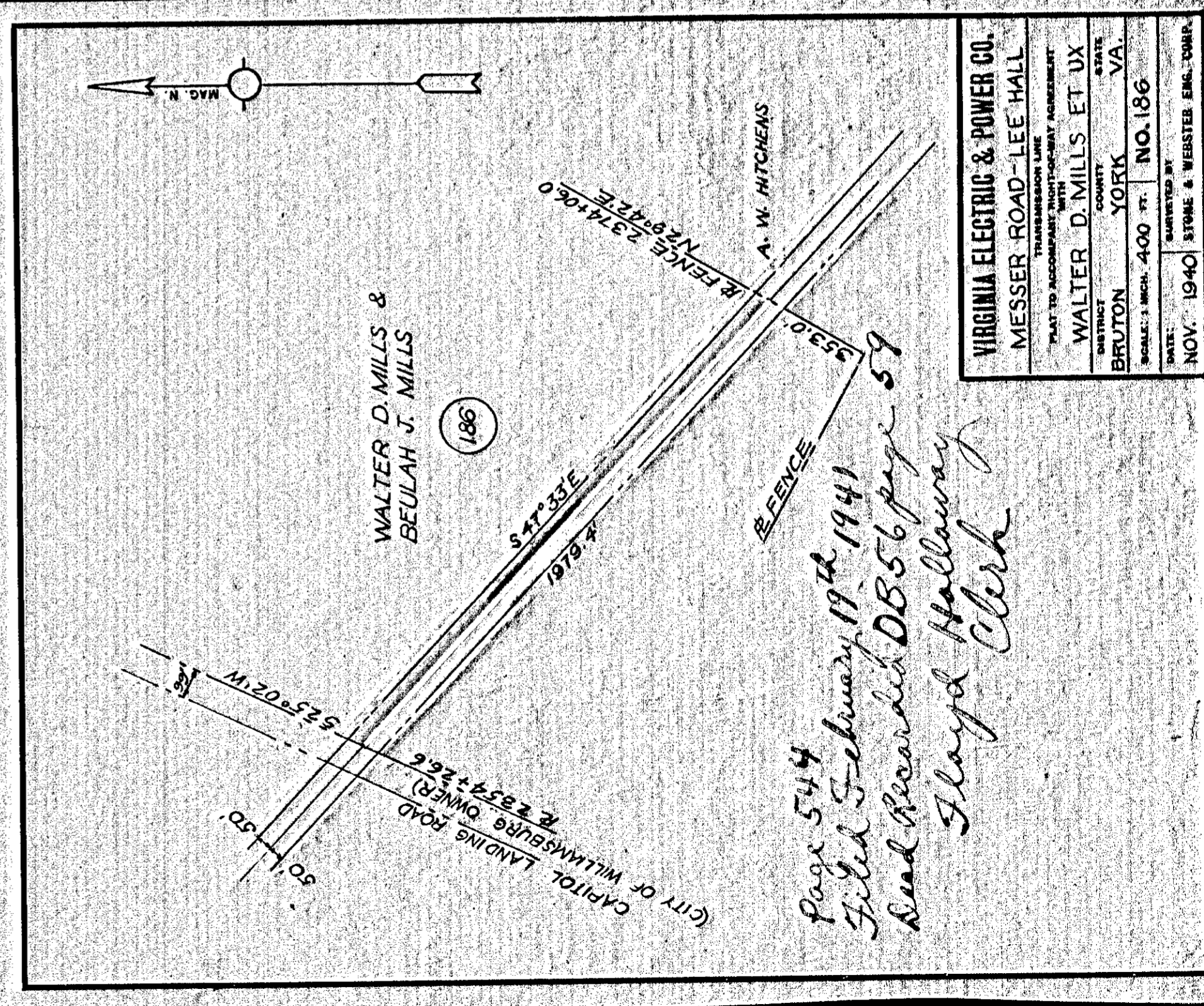


Page 542
 Filed February 19th 1941
 Need Recorded DB 56 p. 55
 Floyd Hallaway
 Clerk

VIRGINIA ELECTRIC & POWER CO.	
MESSER ROAD - LEE HALL	
TRANSMISSION LINE	
PLAT TO ACCOMPANY RIGHT-OF-WAY AGREEMENT WITH	
DISTRICT	YORK
COUNTY	YORK
STATE	VA.
SCALE: 1 INCH = 200 FT.	NO. 193-B
DATE:	SEPT. 1940
DRAWN BY: STONE & WEBSTER ENGR. COMP.	

542

544

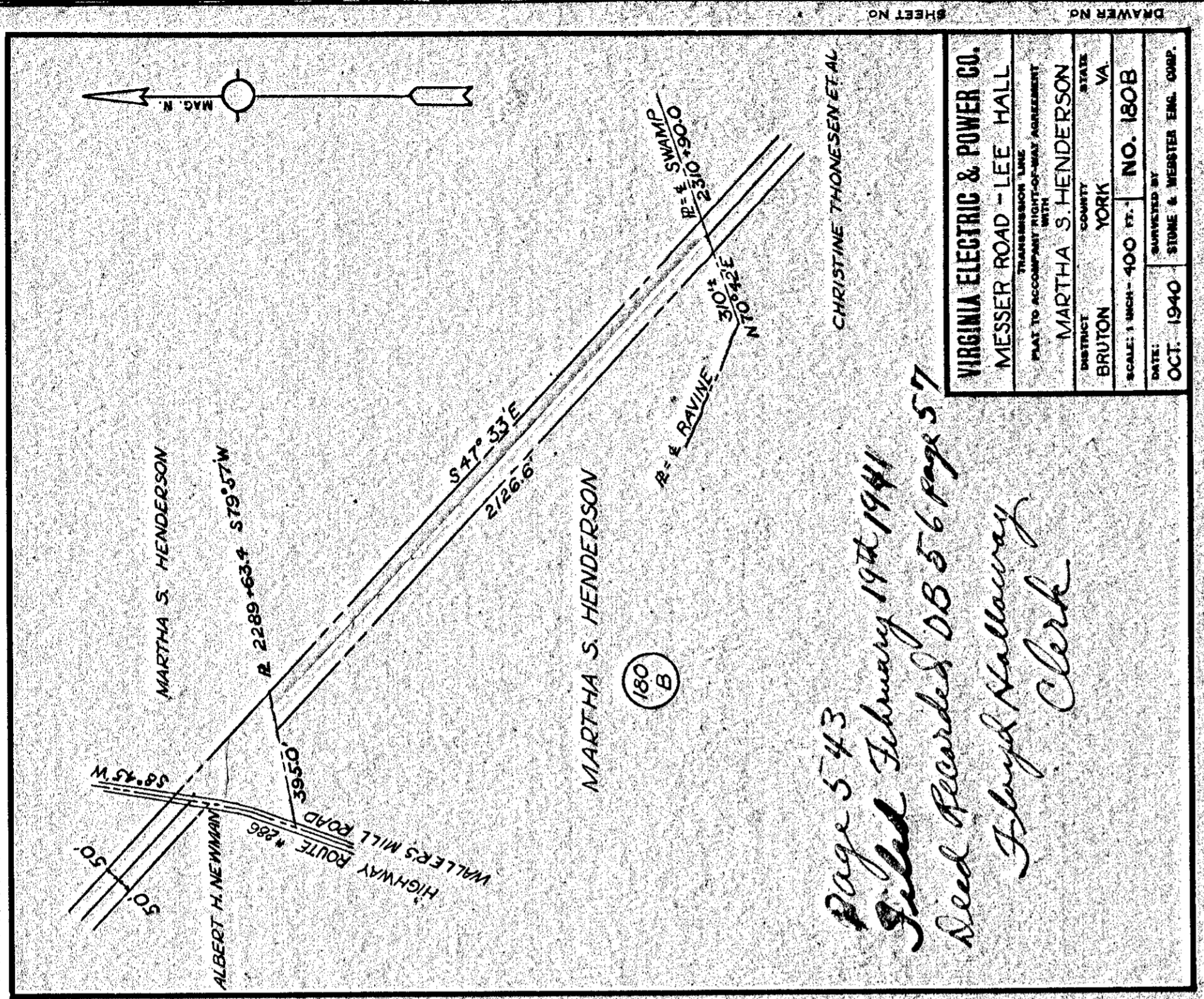


Page 544
 Filed February 19th 1941
 Need Recorded DB 56 p. 59
 Floyd Hallaway
 Clerk

VIRGINIA ELECTRIC & POWER CO.	
MESSER ROAD - LEE HALL	
TRANSMISSION LINE	
PLAT TO ACCOMPANY RIGHT-OF-WAY AGREEMENT WITH	
DISTRICT	YORK
COUNTY	YORK
STATE	VA.
SCALE: 1 INCH = 400 FT.	NO. 186
DATE:	NOV. 1940
DRAWN BY: STONE & WEBSTER ENGR. COMP.	

542

544

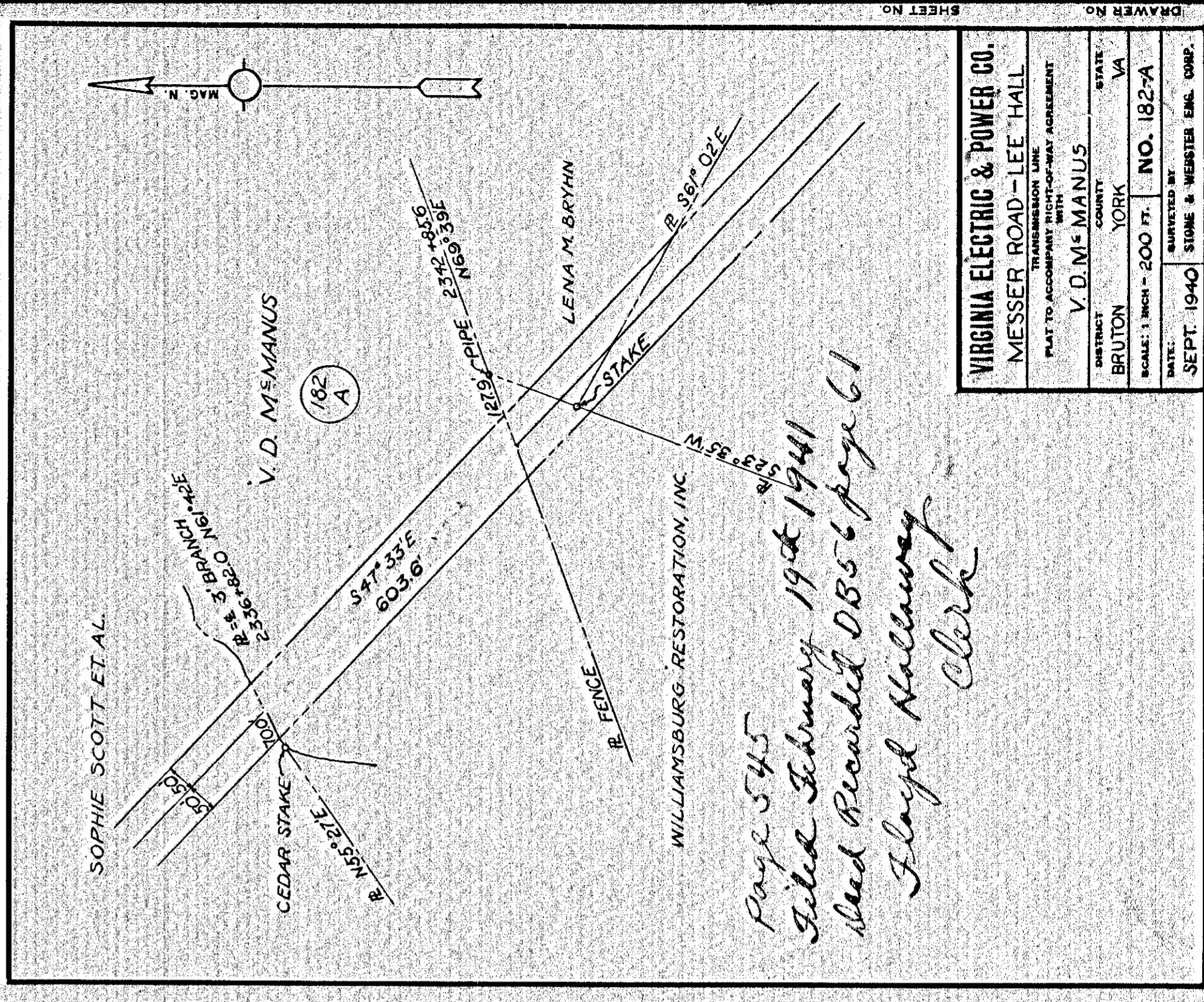


Page 543
 Filed February 19th 1941
 Need Recorded DB 56 p. 57
 Floyd Hallaway
 Clerk

VIRGINIA ELECTRIC & POWER CO.	
MESSER ROAD - LEE HALL	
TRANSMISSION LINE	
PLAT TO ACCOMPANY RIGHT-OF-WAY AGREEMENT WITH	
DISTRICT	YORK
COUNTY	YORK
STATE	VA.
SCALE: 1 INCH = 400 FT.	NO. 180B
DATE:	OCT. 1940
DRAWN BY: STONE & WEBSTER ENGR. COMP.	

543

545



Page 545
 Filed February 19th 1941
 Need Recorded DB 56 p. 61
 Floyd Hallaway
 Clerk

VIRGINIA ELECTRIC & POWER CO.	
MESSER ROAD - LEE HALL	
TRANSMISSION LINE	
PLAT TO ACCOMPANY RIGHT-OF-WAY AGREEMENT WITH	
DISTRICT	YORK
COUNTY	YORK
STATE	VA.
SCALE: 1 INCH = 200 FT.	NO. 182-A
DATE:	SEPT. 1940
DRAWN BY: STONE & WEBSTER ENGR. COMP.	

543

545