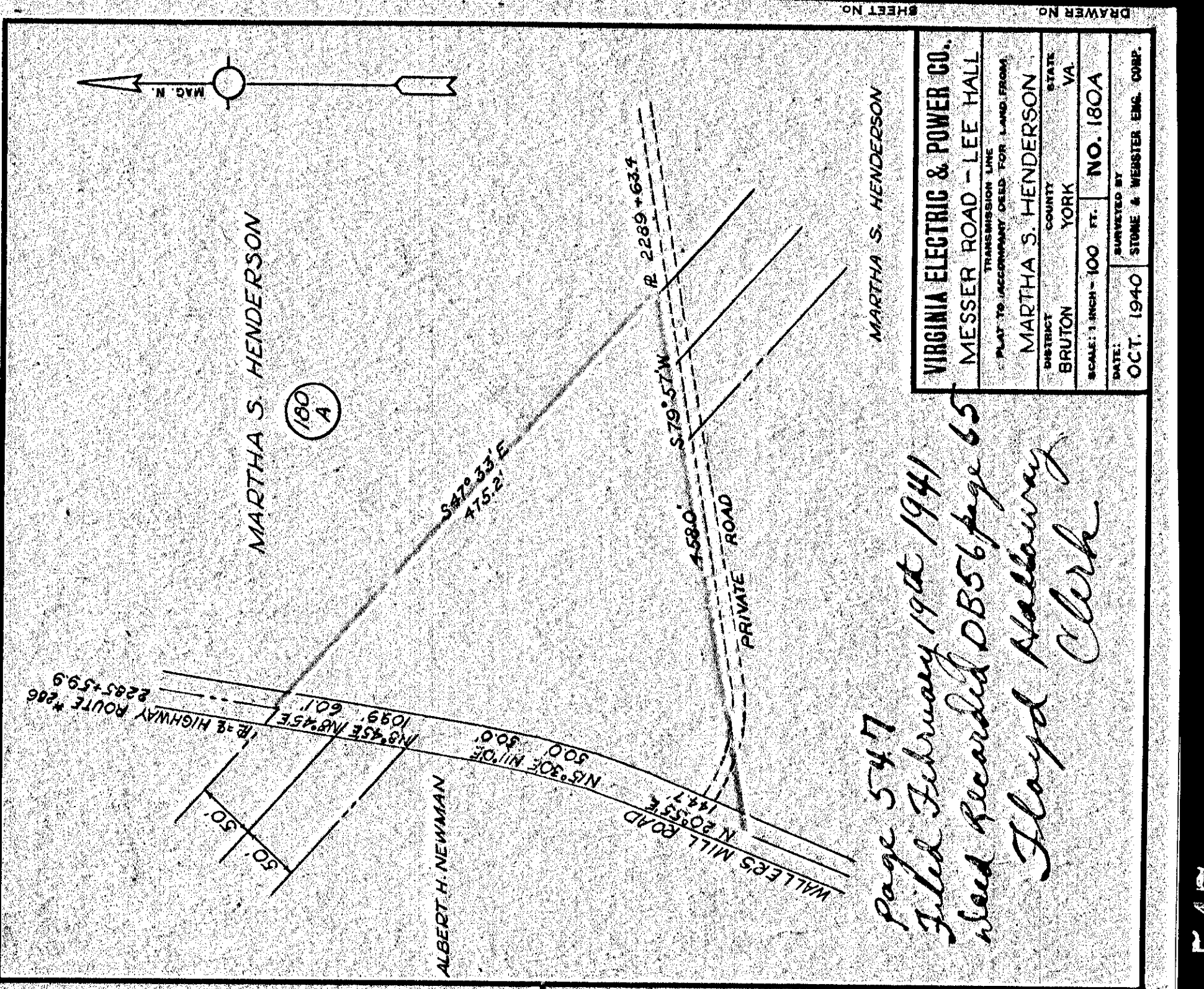


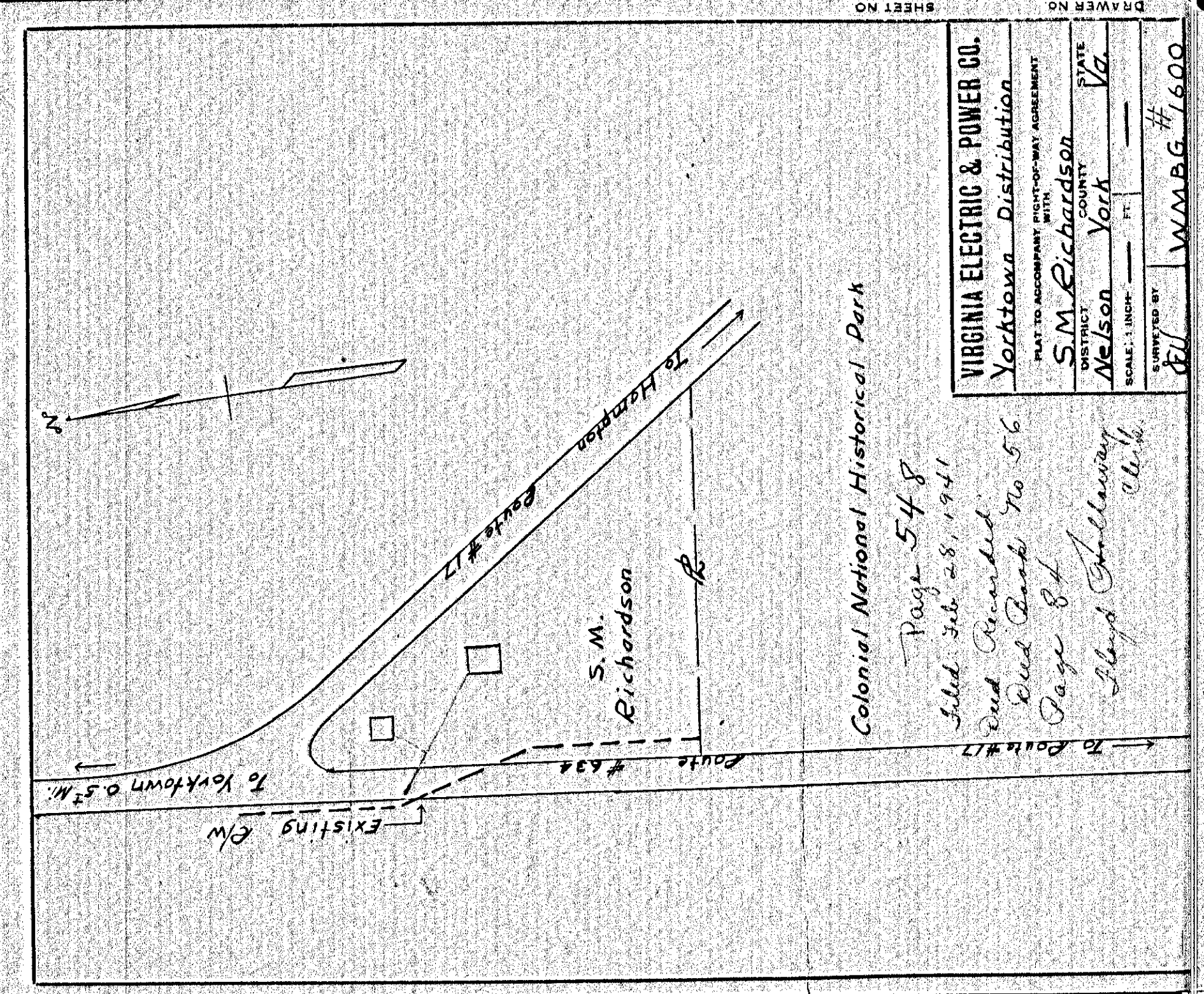
Page 546
 Filed February 19th 1941
 Need Recorded DB56 page 63
 Floyd Hallaway
 Clerk

VIRGINIA ELECTRIC & POWER CO.	
MESSER ROAD - LEE HALL	
PLAT TO ACCOMPANY DEED FOR LAND FROM	
DISTRICT	ADOLPHUS ASHBY
COUNTY	YORK
STATE	VA.
SCALE: 1 INCH = 200 FT.	NO. 193-A
DATE: SEPT. 1940	SURVEYED BY STONE & WEBSTER, ENGR. CORP.



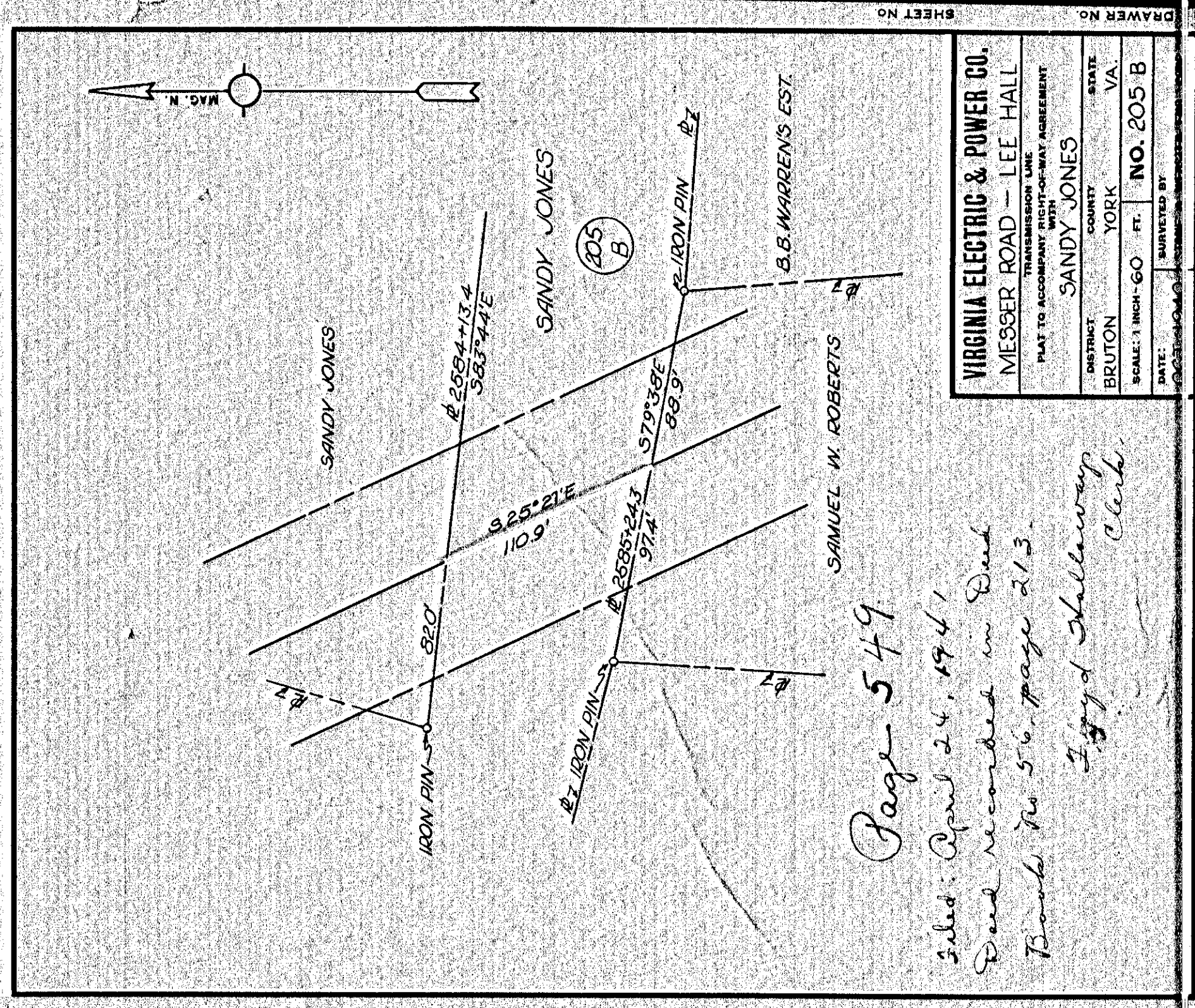
Page 547
 Filed February 19th 1941
 Need Recorded DB56 page 65
 Floyd Hallaway
 Clerk

VIRGINIA ELECTRIC & POWER CO.	
MESSER ROAD - LEE HALL	
PLAT TO ACCOMPANY DEED FOR LAND FROM	
DISTRICT	MARTHA S. HENDERSON
COUNTY	YORK
STATE	VA.
SCALE: 1 INCH = 100 FT.	NO. 180A
DATE: OCT. 1940	SURVEYED BY STONE & WEBSTER, ENGR. CORP.



Page 548
 Filed Feb 28, 1941
 Need Recorded
 Deed Book No 56
 Page 84
 Floyd Hallaway
 Clerk

VIRGINIA ELECTRIC & POWER CO.	
Yorktown Distribution	
PLAT TO ACCOMPANY DEED TO ACCOMPANY AGREEMENT	
DISTRICT	S.M. Richardson
COUNTY	York
STATE	Va.
SCALE: 1 INCH = 100 FT.	NO. 1600
DATE: SEPT. 1940	SURVEYED BY WMBG



Page 549
 Filed April 24, 1941
 Deed recorded in Deed
 Book No 56 page 213
 Floyd Hallaway
 Clerk

VIRGINIA ELECTRIC & POWER CO.	
MESSER ROAD - LEE HALL	
PLAT TO ACCOMPANY DEED TO ACCOMPANY AGREEMENT	
DISTRICT	SANDY JONES
COUNTY	YORK
STATE	VA.
SCALE: 1 INCH = 100 FT.	NO. 205 B
DATE: SEPT. 1940	SURVEYED BY STONE & WEBSTER, ENGR. CORP.

547

549

546

548