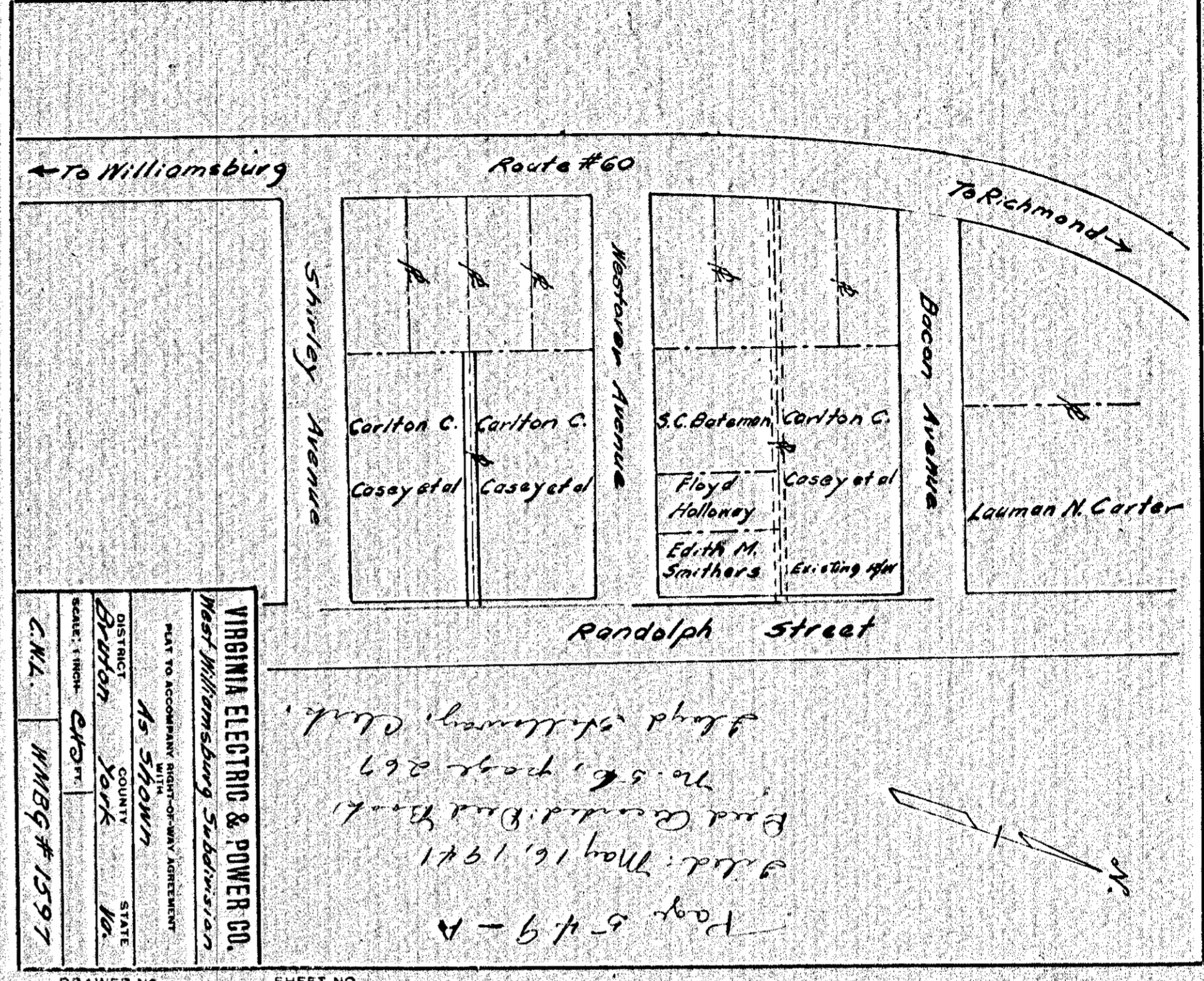


VIRGINIA ELECTRIC & POWER CO.
 Casey's Corner
 PLAT TO ACCOMPANY RIGHT-OF-WAY AGREEMENT
 DISTRICT *As Shown* COUNTY *York* STATE *Va*
 DISTRICT *York* COUNTY *York* STATE *Va*
 SCALE: 1" = 40' ft.
 SUBMITTED BY *WMBG #1597*

DRAWER NO. SHEET NO.

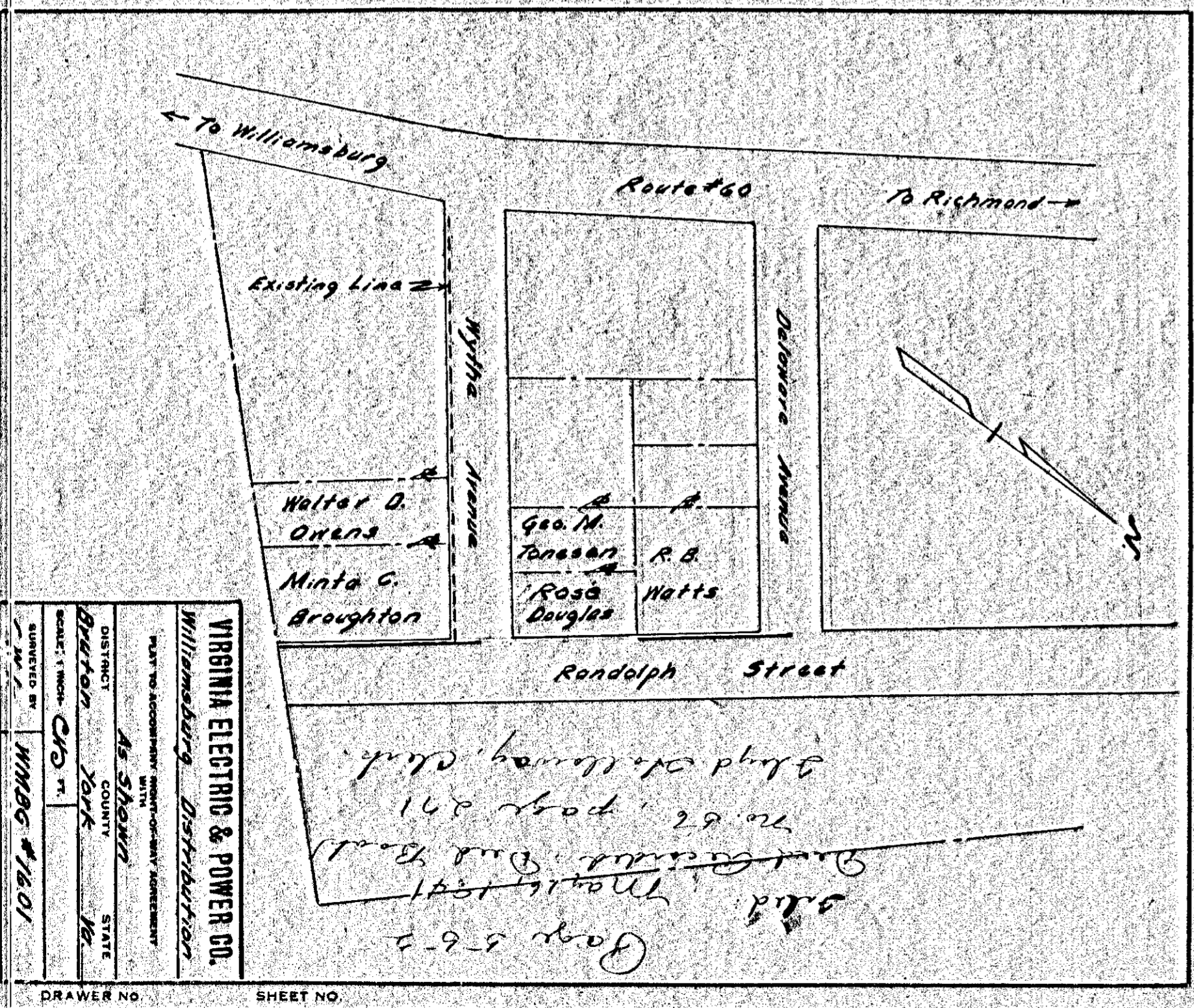
551



VIRGINIA ELECTRIC & POWER CO.
 West Williamsburg Subdivision
 PLAT TO ACCOMPANY RIGHT-OF-WAY AGREEMENT
 DISTRICT *As Shown* COUNTY *York* STATE *Va*
 DISTRICT *York* COUNTY *York* STATE *Va*
 SCALE: 1" = 40' ft.
 C.W.L. *WMBG #1597*

DRAWER NO. SHEET NO.

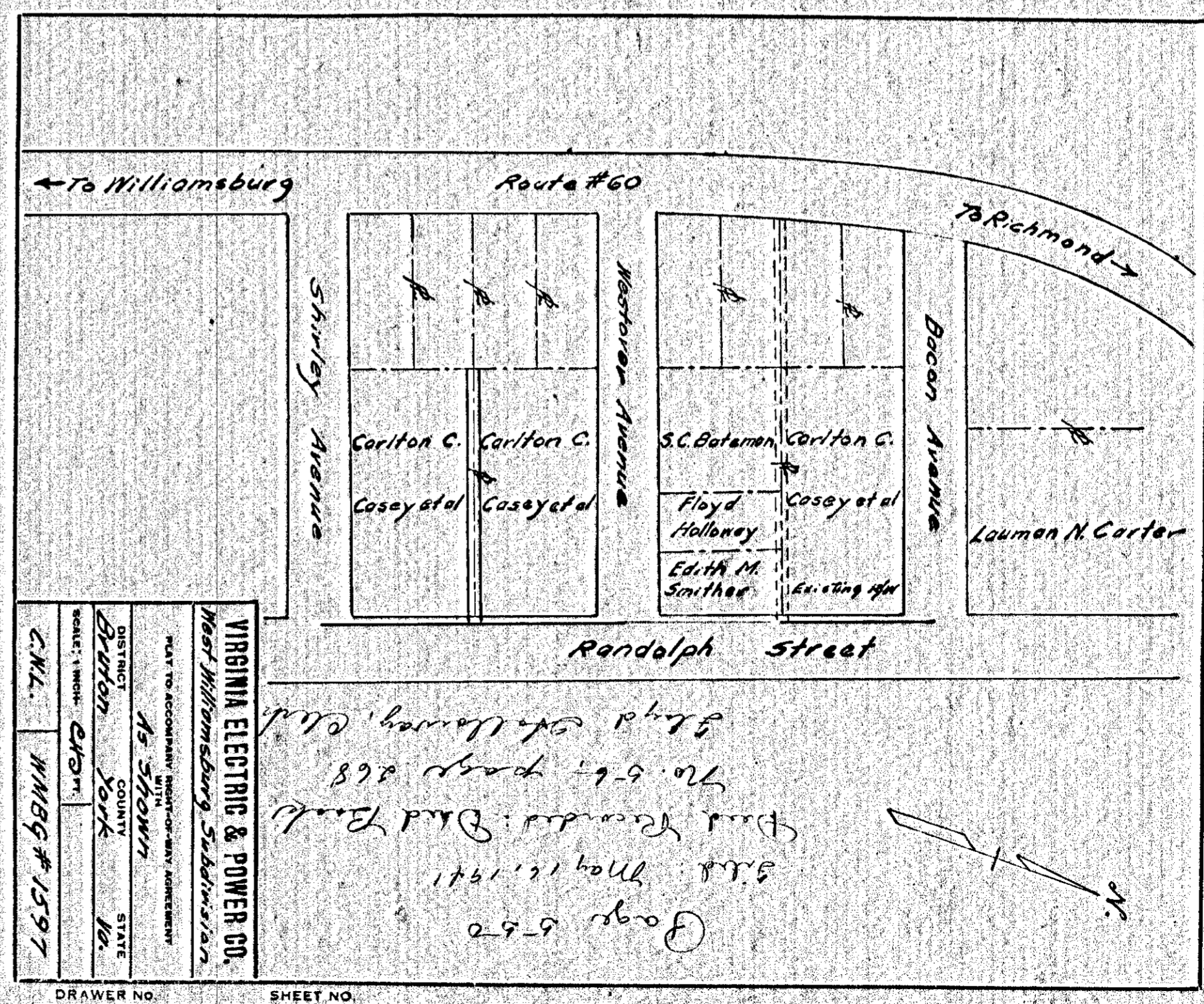
549A



VIRGINIA ELECTRIC & POWER CO.
 Williamsburg Distribution
 PLAT TO ACCOMPANY RIGHT-OF-WAY AGREEMENT
 DISTRICT *As Shown* COUNTY *York* STATE *Va*
 DISTRICT *York* COUNTY *York* STATE *Va*
 SCALE: 1" = 40' ft.
 SUBMITTED BY *WMBG #1601*

DRAWER NO. SHEET NO.

552



VIRGINIA ELECTRIC & POWER CO.
 West Williamsburg Subdivision
 PLAT TO ACCOMPANY RIGHT-OF-WAY AGREEMENT
 DISTRICT *As Shown* COUNTY *York* STATE *Va*
 DISTRICT *York* COUNTY *York* STATE *Va*
 SCALE: 1" = 40' ft.
 C.W.L. *WMBG #1597*

DRAWER NO. SHEET NO.

550