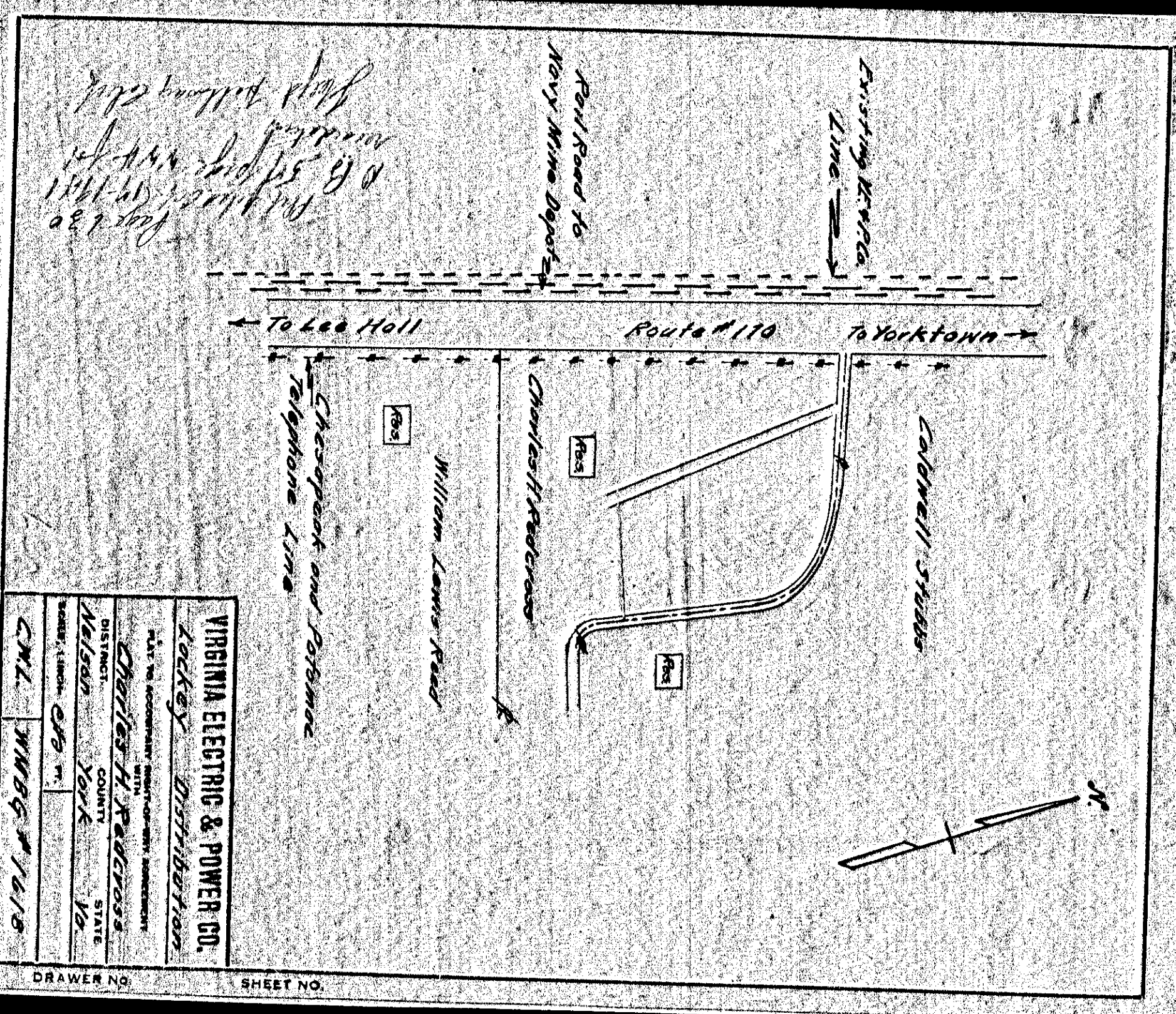


VIRGINIA ELECTRIC & POWER CO.  
 Yorktown Distribution  
 Lockett Distribution  
 Sydney Smith Estate  
 Nelson York Va.  
 SCALE: 1"=40'

PLAT TO ACCOMPANY RIGHT-OF-WAY AGREEMENT  
 DISTRICT: Yorktown  
 COUNTY: York  
 STATE: Va.  
 DATE: 11/11/11  
 DRAWER NO. CML SHEET NO. WMBG# 1622

DRAWER NO. SHEET NO.



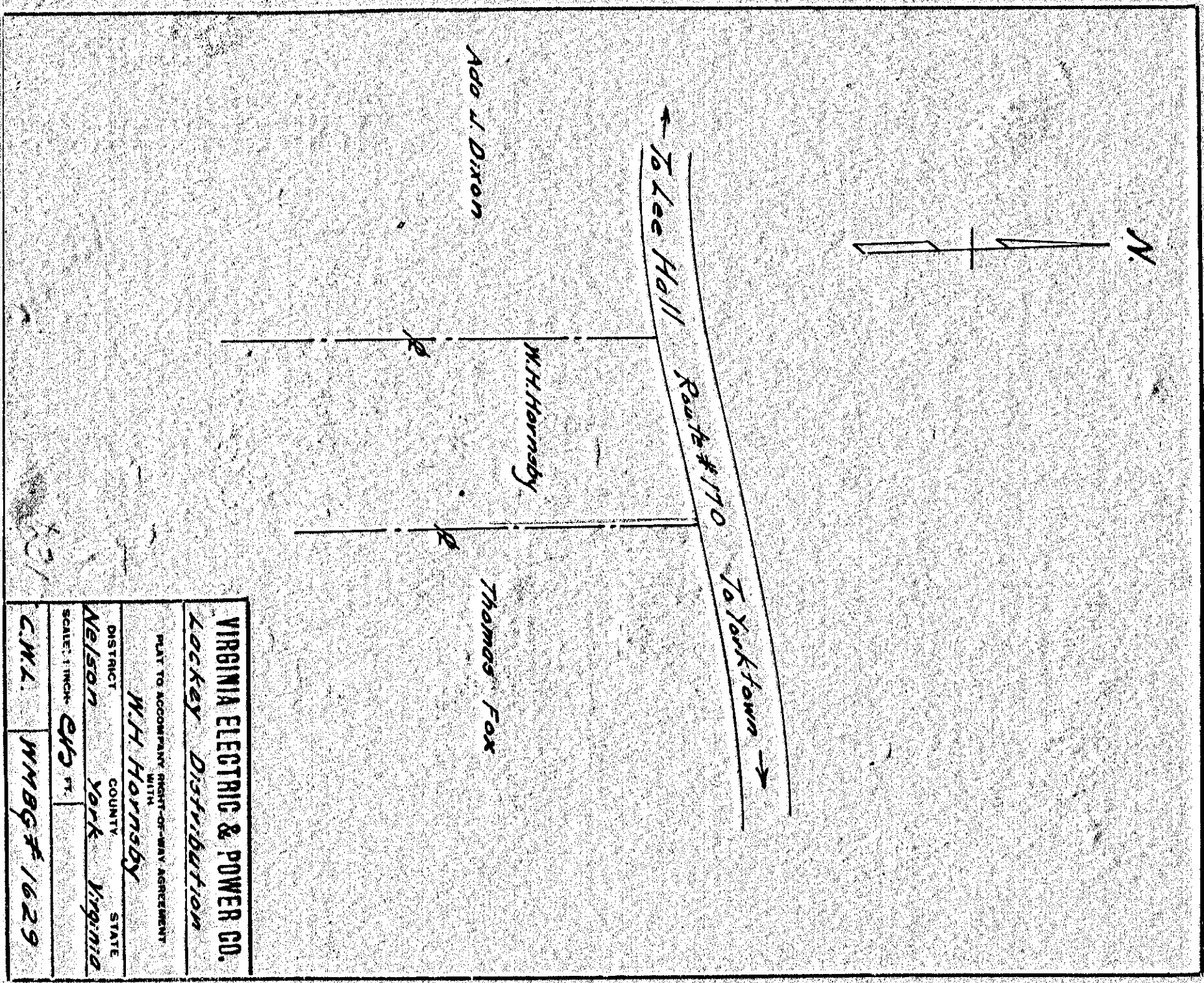
VIRGINIA ELECTRIC & POWER CO.  
 Lockett Distribution  
 Charles H. Patterson  
 Nelson York Va.  
 SCALE: 1"=40'

PLAT TO ACCOMPANY RIGHT-OF-WAY AGREEMENT  
 DISTRICT: Lee Hall  
 COUNTY: York  
 STATE: Va.  
 DATE: 11/11/11  
 DRAWER NO. CML SHEET NO. WMBG# 1618

DRAWER NO. SHEET NO.

629

631



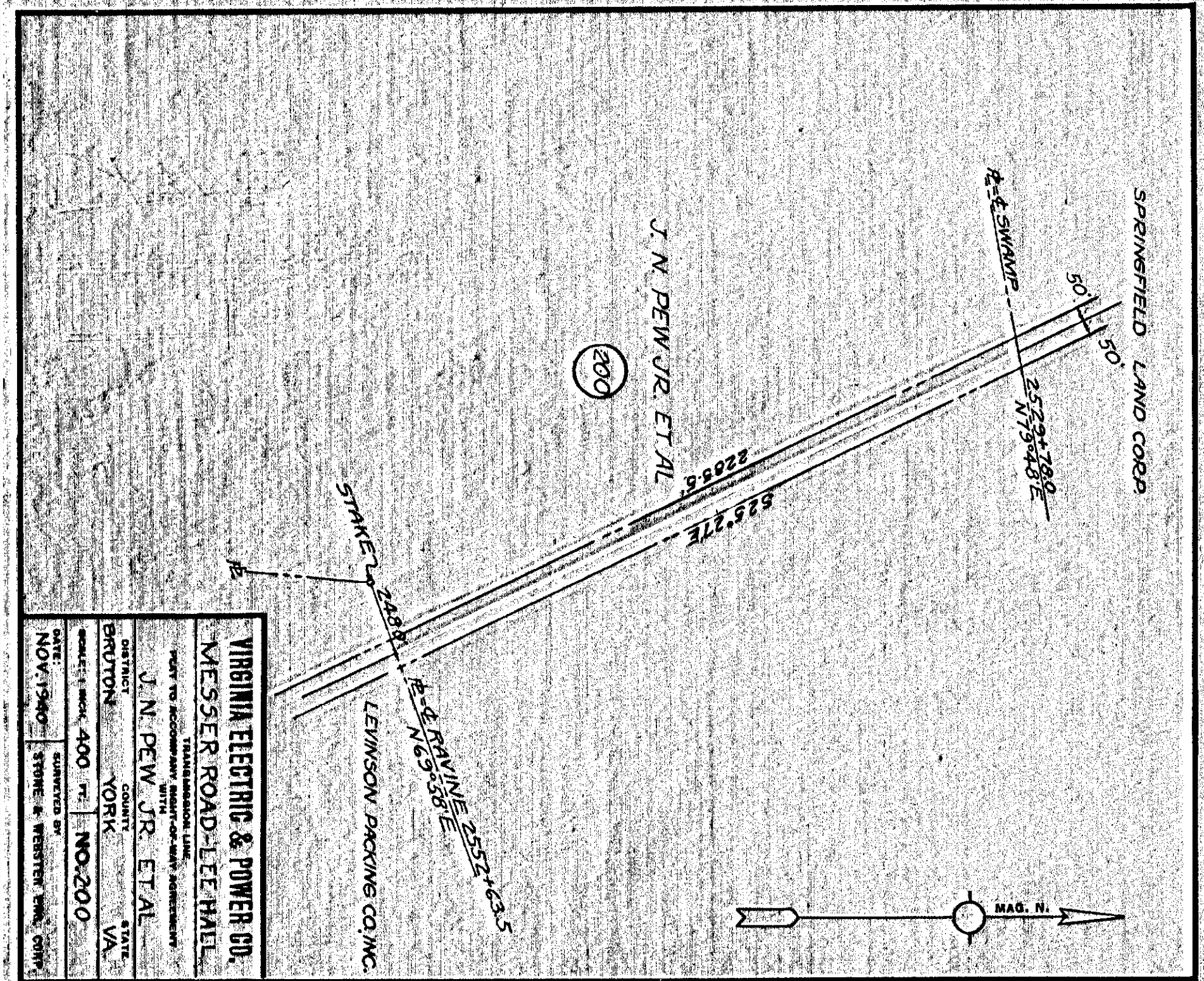
VIRGINIA ELECTRIC & POWER CO.  
 Lockett Distribution  
 W.H. Hornsby  
 Nelson York Virginia  
 SCALE: 1"=40'

PLAT TO ACCOMPANY RIGHT-OF-WAY AGREEMENT  
 DISTRICT: Lee Hill  
 COUNTY: York  
 STATE: Virginia  
 DATE: 11/11/11  
 DRAWER NO. CML SHEET NO. WMBG# 1629

DRAWER NO. SHEET NO.

630

632



VIRGINIA ELECTRIC & POWER CO.  
 TRANSMISSION LINE  
 Messer Road-Lee Hill  
 J.N. Dew Jr. Et Al  
 Bruton York VA  
 SCALE: 1"=400'

PLAT TO ACCOMPANY RIGHT-OF-WAY AGREEMENT  
 DISTRICT: Bruton  
 COUNTY: York  
 STATE: VA  
 DATE: NOV 15/10  
 DRAWER NO. STORE # RESUBMIT DATE

DRAWER NO. SHEET NO.