

PLAT, SHOWING LOCATION OF A ROAD AND SEVERAL TRACTS OF LAND LOCATED NEAR YORKTOWN, VA.

To be retained out of property sold to Hotel Company.

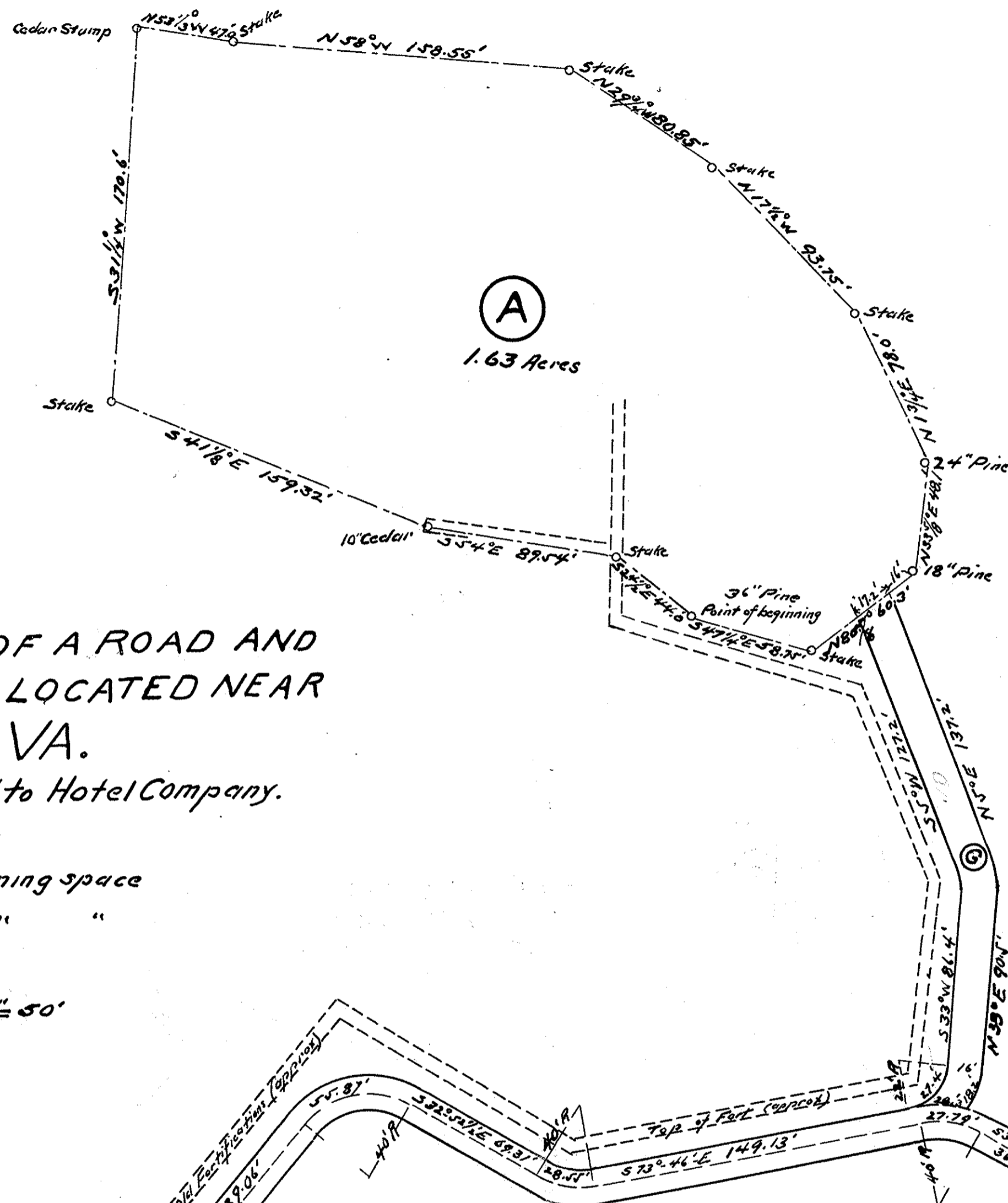
Parcel A is retained by Mr. J.F. Braun

- " D provides a branch road and turning space
- " G " " " " " "

Surveyed by
H.R. Noel, Civ. Eng.
Richmond, Va.
Jan 30, 1924 Scale 1" = 50'

THE JAMESTOWN PORTLAND CEMENT CORPORATION, JOHN F. BRAUN, HOWARD FERRIS AND HELEN N. SMITH, TRUSTEES IN LIQUIDATION, THEIR SUCCESSORS AND ASSIGNS, RESERVE THE RIGHT TO CHANGE, ALTER OR RELOCATE THE ROADS AND HIGHWAYS SHOWN ON THIS PLAT.

New Road to proposed Hotel



VIRGINIA: COUNTY OF YORK TO WIT:-

IN THE CLERK'S OFFICE OF THE CIRCUIT COURT OF THE COUNTY OF YORK THE DAY OF NOVEMBER 1924 THE FOREGOING PLAT MADE BY H.R. NOEL, CIV. ENG. WAS THIS DAY PRESENTED AND ADMITTED TO RECORD IN PLAT BOOK No 3 PAGE 4

TESTE *Floyd Holloway*
CLERK

See next page