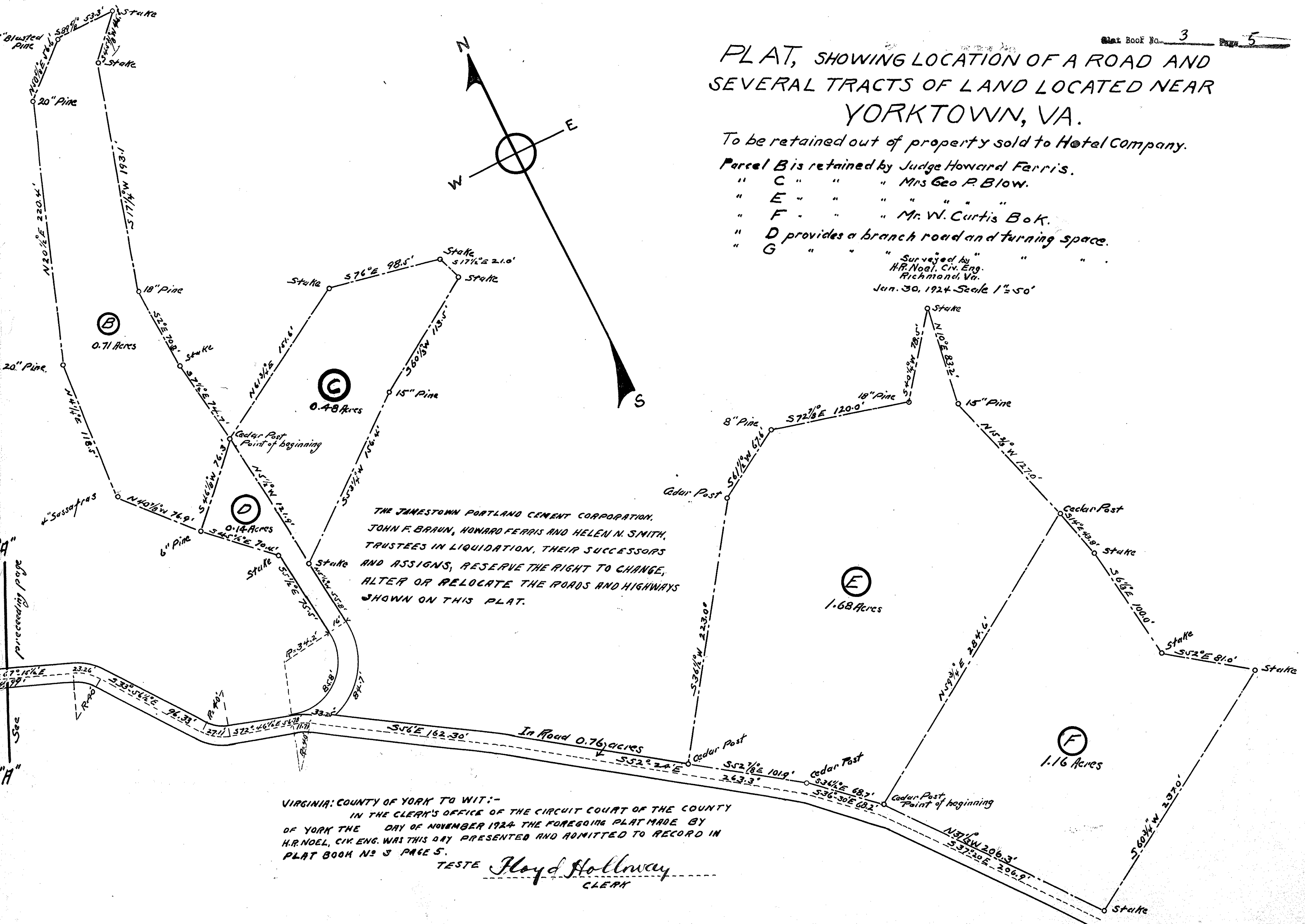


PLAT, SHOWING LOCATION OF A ROAD AND SEVERAL TRACTS OF LAND LOCATED NEAR YORKTOWN, VA.

To be retained out of property sold to Hotel Company.

- Parcel B is retained by Judge Howard Ferris.
- " C " " " Mrs Geo P. Blow.
- " E " " " " " Curtis " Bok.
- " D provides a branch road and turning space.
- " G " " " " " " " " " "

Surveyed by H.P. Noel, Civ. Eng. Richmond, Va. Jan. 30, 1924. Scale 1"=50'



THE JAMESTOWN PORTLAND CEMENT CORPORATION,
JOHN F. BRAUN, HOWARD FERRIS AND HELEN N. SMITH,
TRUSTEES IN LIQUIDATION, THEIR SUCCESSORS
AND ASSIGNS, RESERVE THE RIGHT TO CHANGE,
ALTER OR RELOCATE THE ROADS AND HIGHWAYS
SHOWN ON THIS PLAT.

VIRGINIA: COUNTY OF YORK TO WIT:-
IN THE CLERK'S OFFICE OF THE CIRCUIT COURT OF THE COUNTY
OF YORK THE DAY OF NOVEMBER 1924 THE FOREGOING PLAT MADE BY
H.R. NOEL, CIV. ENG. WAS THIS DAY PRESENTED AND ADMITTED TO RECORD IN
PLAT BOOK NO 3 PAGE 5.

TESTE Floyd Holloway
CLERK