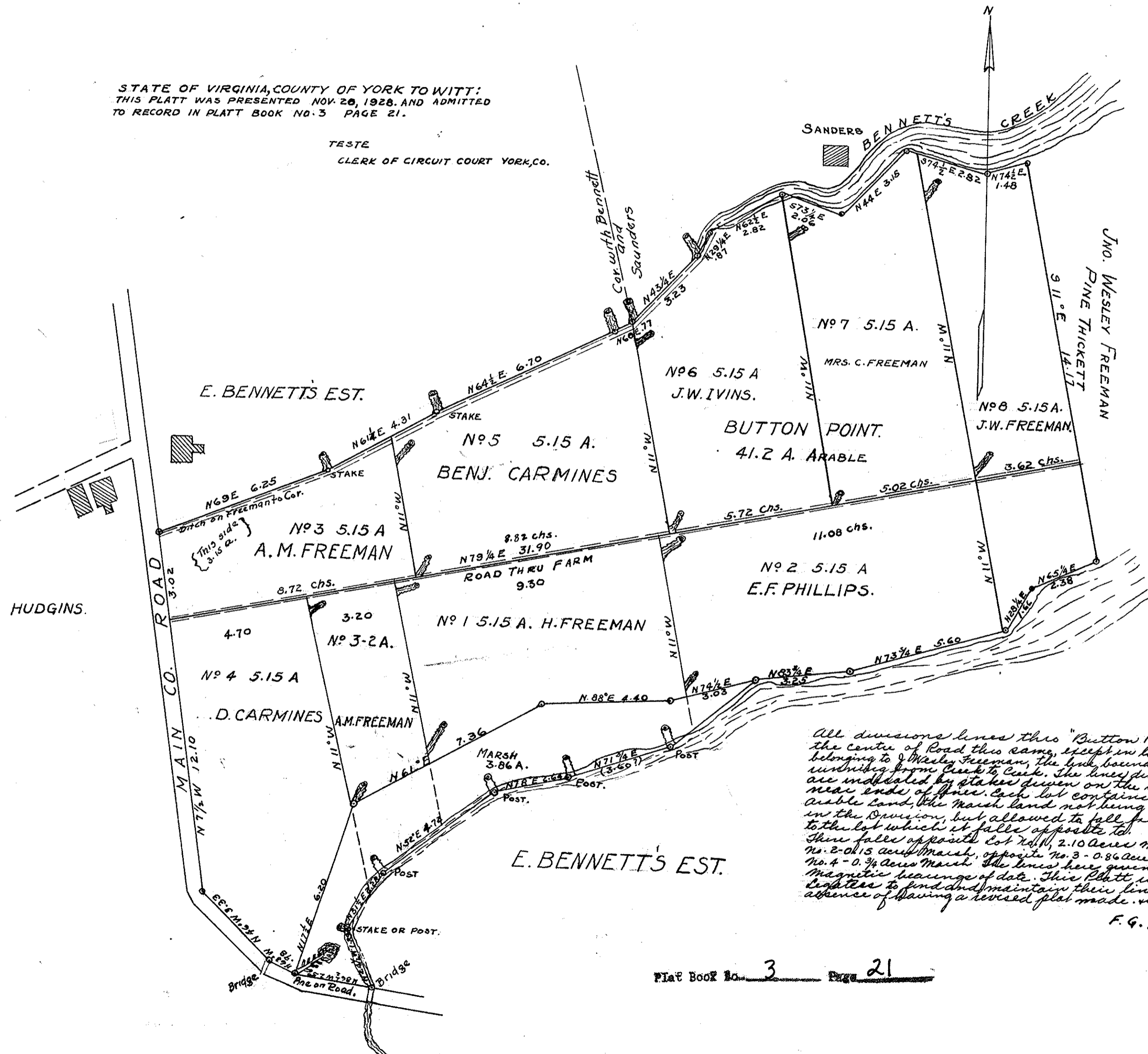


STATE OF VIRGINIA, COUNTY OF YORK TO WITT:  
 THIS PLATT WAS PRESENTED NOV. 20, 1928, AND ADMITTED  
 TO RECORD IN PLATT BOOK NO. 3 PAGE 21.

TESTE  
 CLERK OF CIRCUIT COURT YORK, CO.



All divisions lines thro "Button Point" run to the centre of Road thro same, except in lot no. 8 belonging to Wesley Freeman, the line bounding said lot - Wilton Wilson, running from Creek to Creek. The lines dividing lots are indicated by stakes driven on the road and near ends of lines. Each lot contains 5.15 Acres arable land, the Marsh land not being considered in the Division, but allowed to fall free or gratis to the lot which it falls opposite to. There falls opposite lot no. 1, 2.10 Acres marsh, opposite No. 2 - 0.15 Acres marsh, opposite No. 3 - 0.86 Acres marsh, opposite No. 4 - 0.34 Acres marsh. The lines here given show the Magnet's bearings of date. This Platt, is given to the Lighter to find and maintain their lines by, in the absence of having a revised plat made. v. r.

F. G. Power