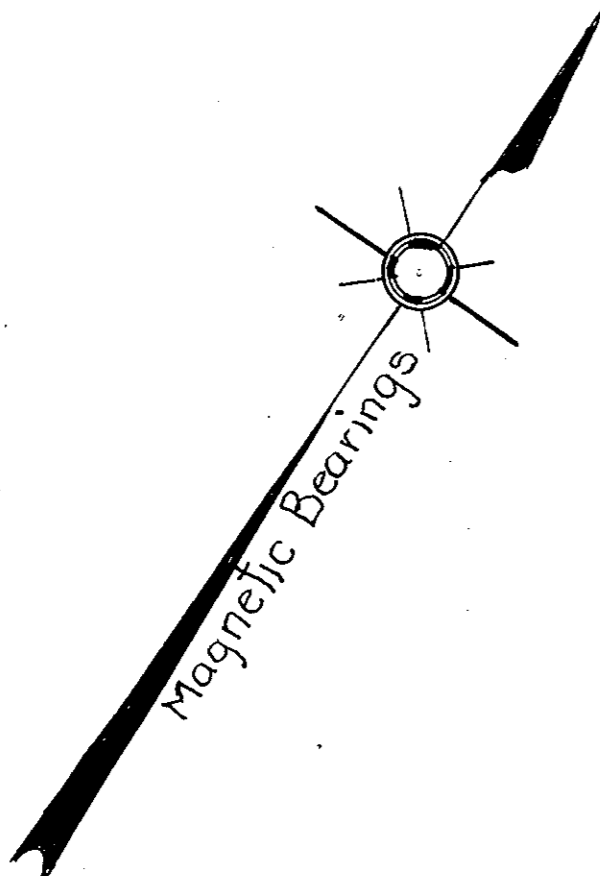
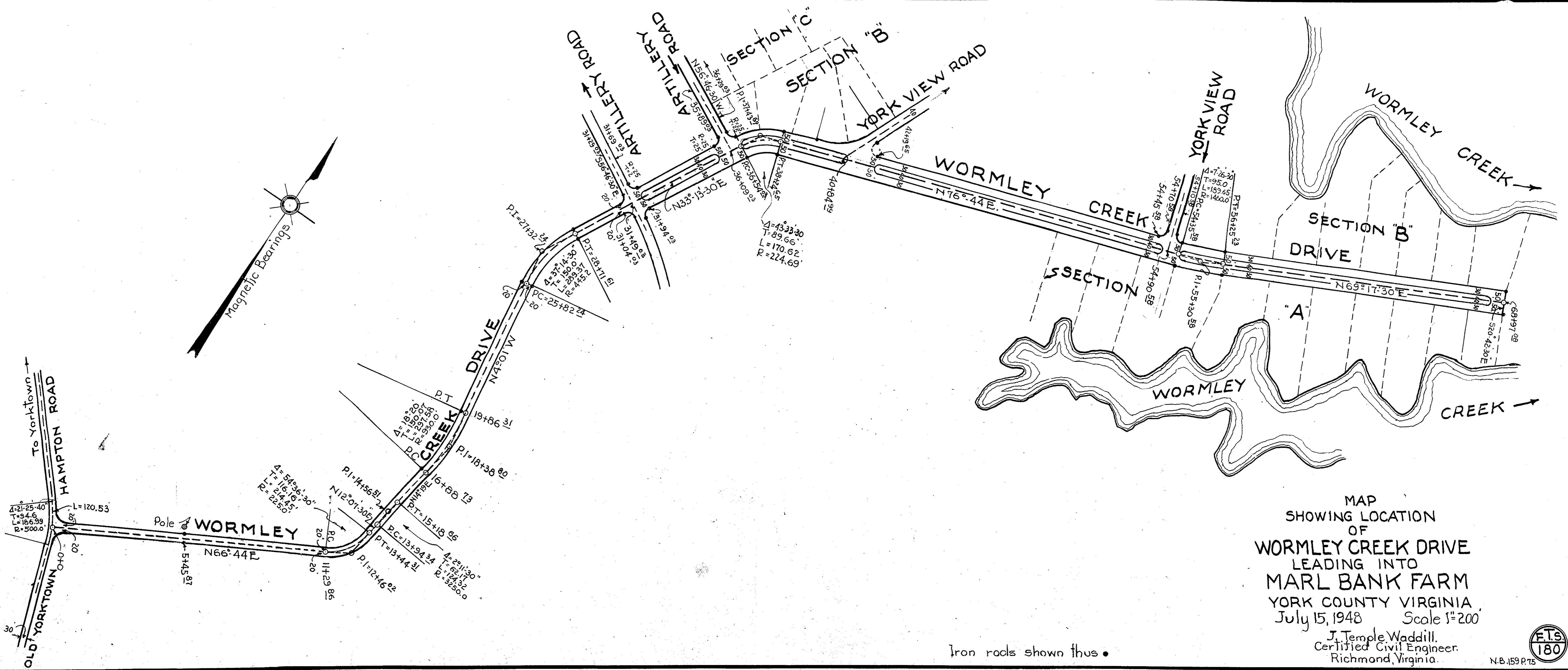


The Delimitation Deed of which this plat is a part is recorded in Deed Book #66, at page 87.



MAP
SHOWING LOCATION
OF
WORMLEY CREEK DRIVE
LEADING INTO
MARL BANK FARM
YORK COUNTY VIRGINIA,
July 15, 1948 Scale 1"=200

J. Temple Waddill,
Certified Civil Engineer,
Richmond, Virginia.



N.B. 159 P. 15

Iron rods shown thus •