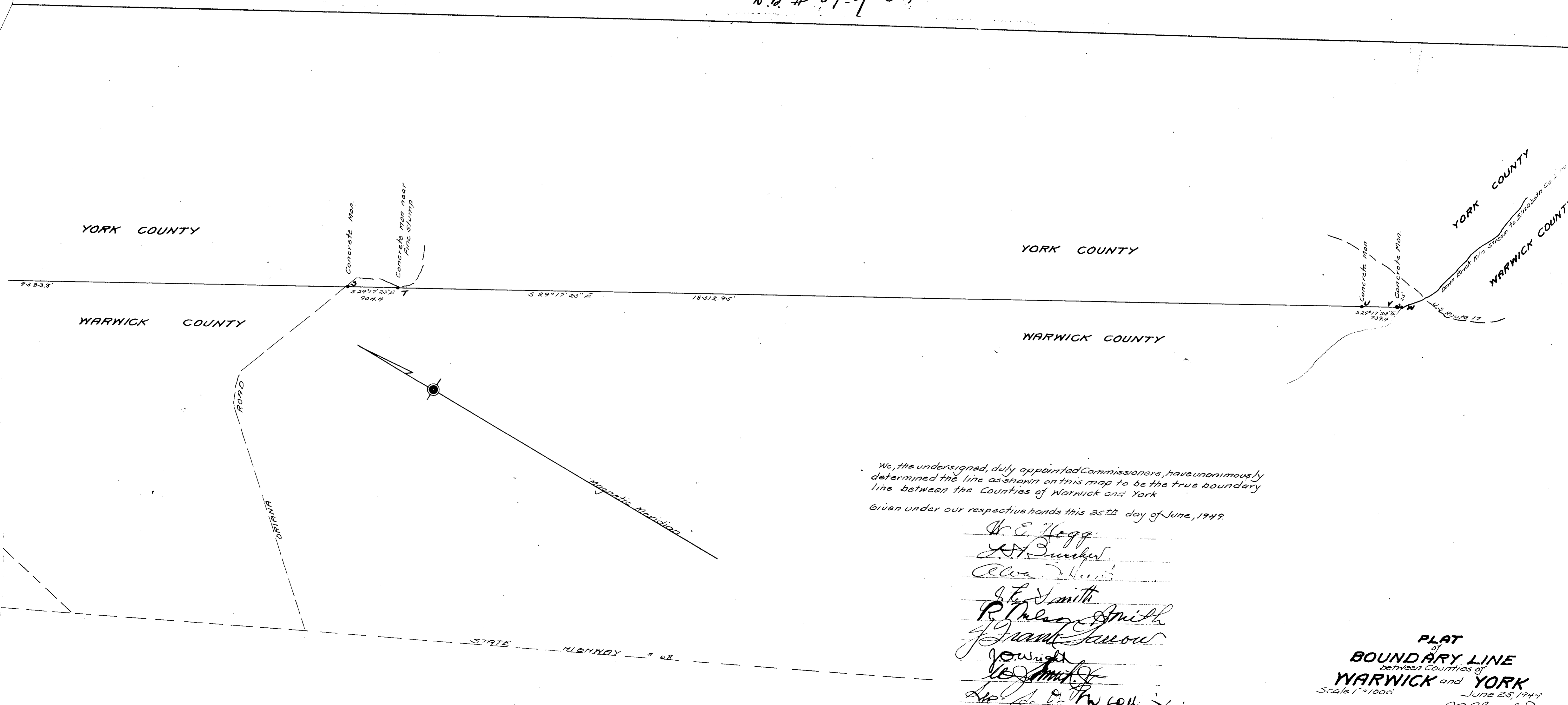


N.B. # 67-p 511



We, the undersigned, duly appointed Commissioners, have unanimously determined the line as shown on this map to be the true boundary line between the Counties of Warwick and York

Given under our respective hands this 25th day of June, 1949.

W. E. Hogg
 J. H. Bunker
 Alva Hunt
 J. E. Smith
 R. Nelson Smith
 J. Frank Snow
 J. Wright
 W. Smith
 W. D. Powell

PLAT
 of
 BOUNDARY LINE
 between Counties of
 WARWICK and YORK
 June 25, 1949
 Scale 1"=1000'

J. B. Brinkley
 Cert. P. Eng'r