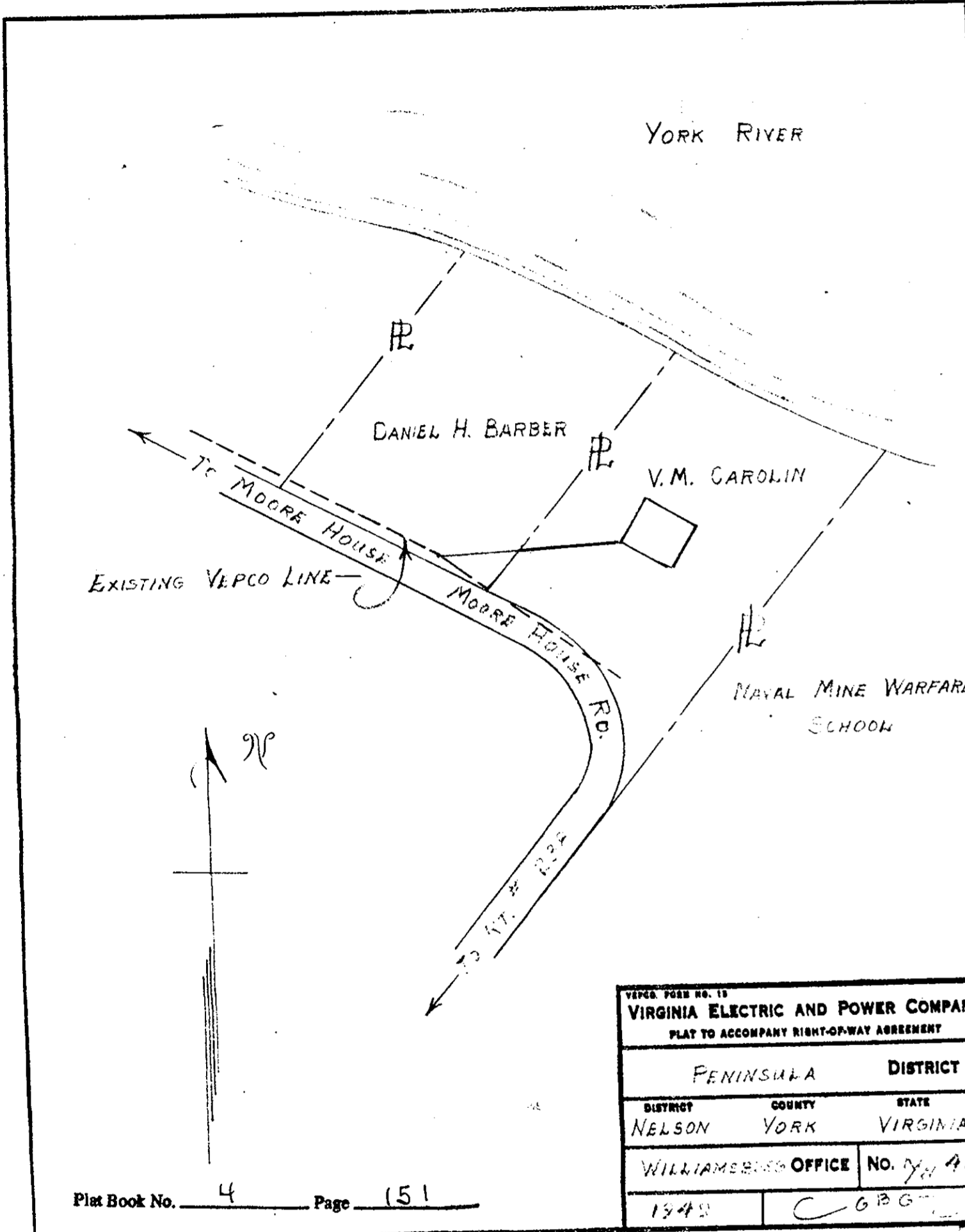
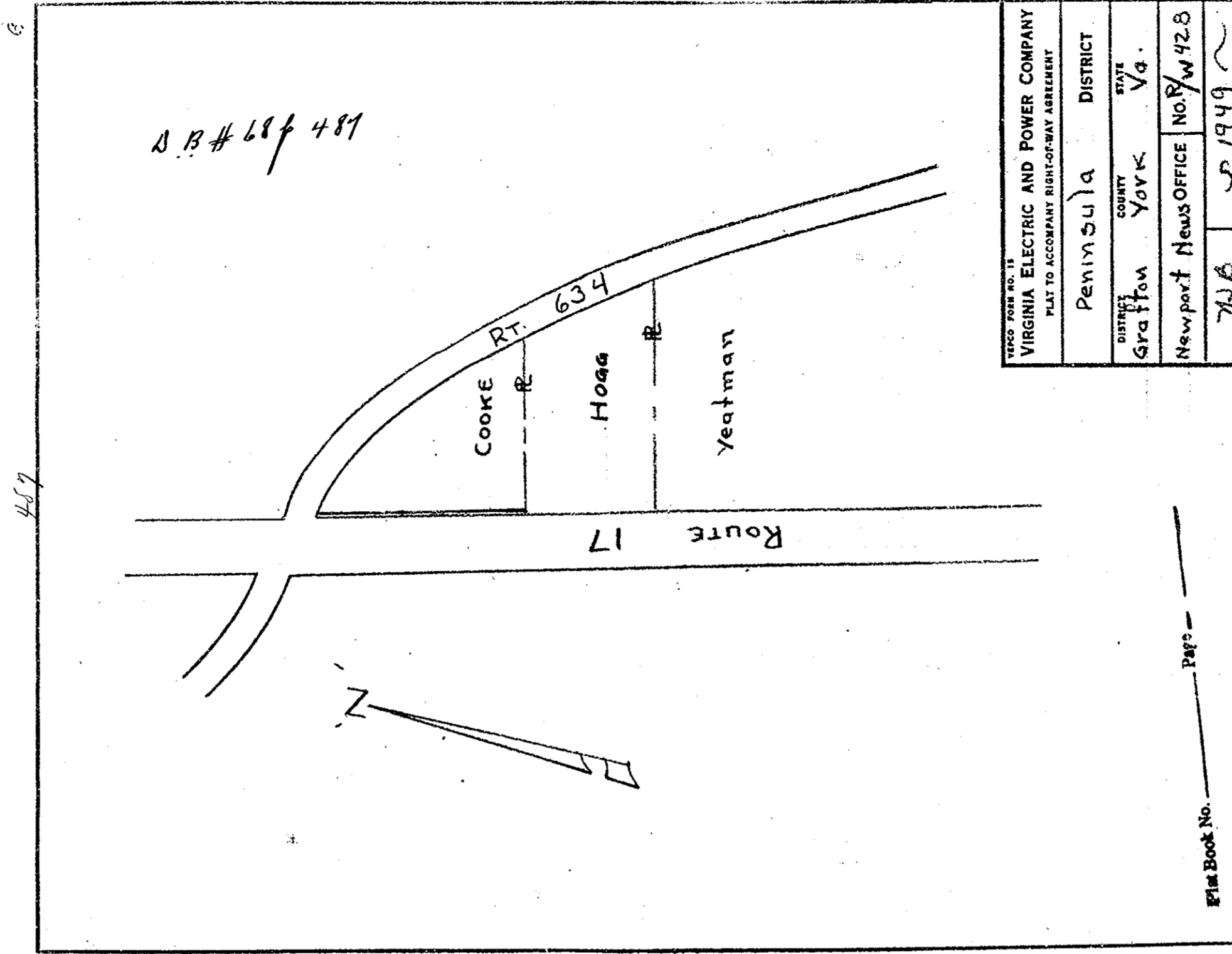


N.B. # 68-p 450



VIRGINIA ELECTRIC AND POWER COMPANY PLAT TO ACCOMPANY RIGHT-OF-WAY AGREEMENT	
PENINSULA	DISTRICT
NELSON	YORK
WILLIAMSBURG OFFICE	No. 724
1343	C 626

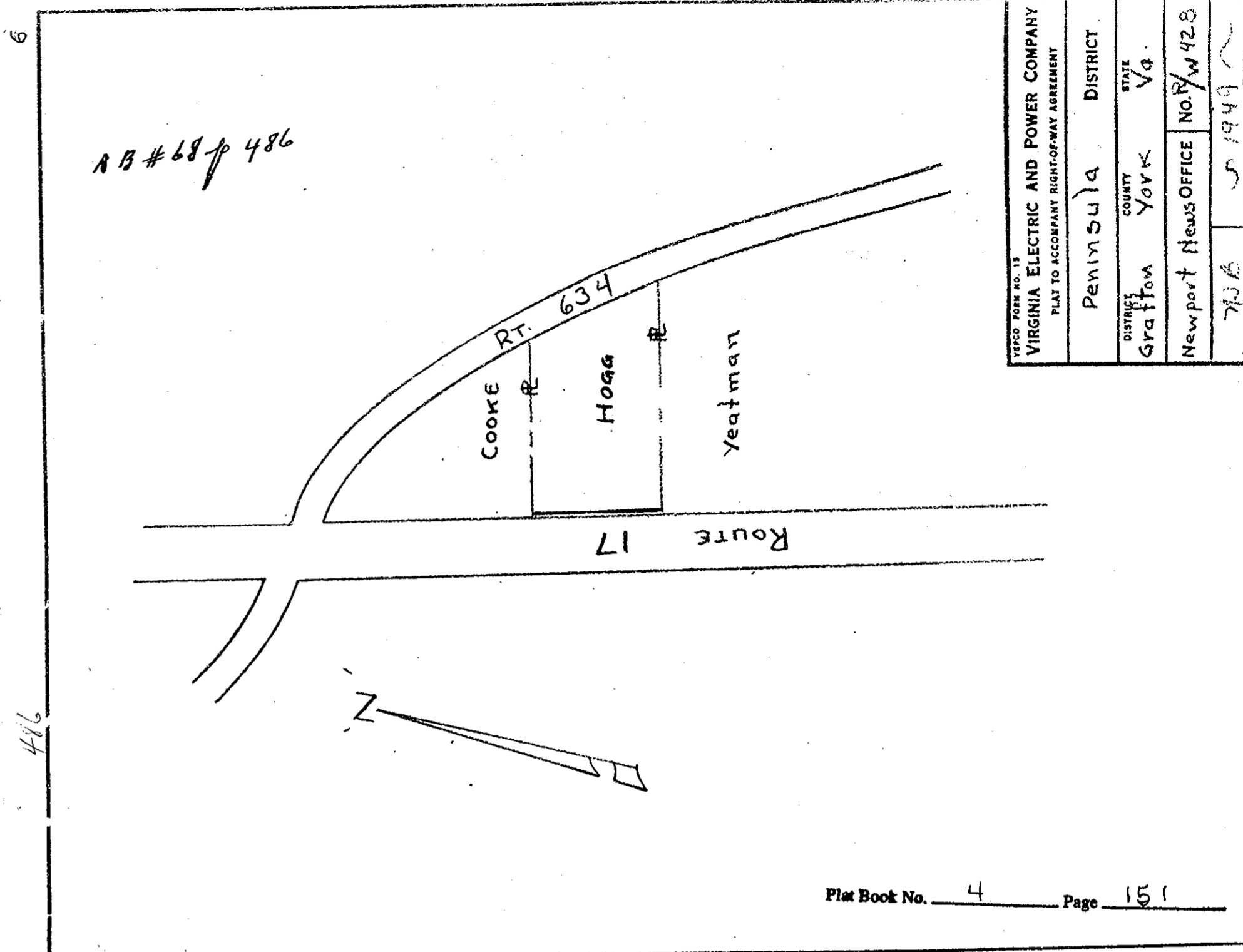
ALBANY, N.Y. 12212



VIRGINIA ELECTRIC AND POWER COMPANY PLAT TO ACCOMPANY RIGHT-OF-WAY AGREEMENT	
PENINSULA	DISTRICT
GRAFTON	YORK
NEWPORT NEWS OFFICE	No. 1428
726	5 1949

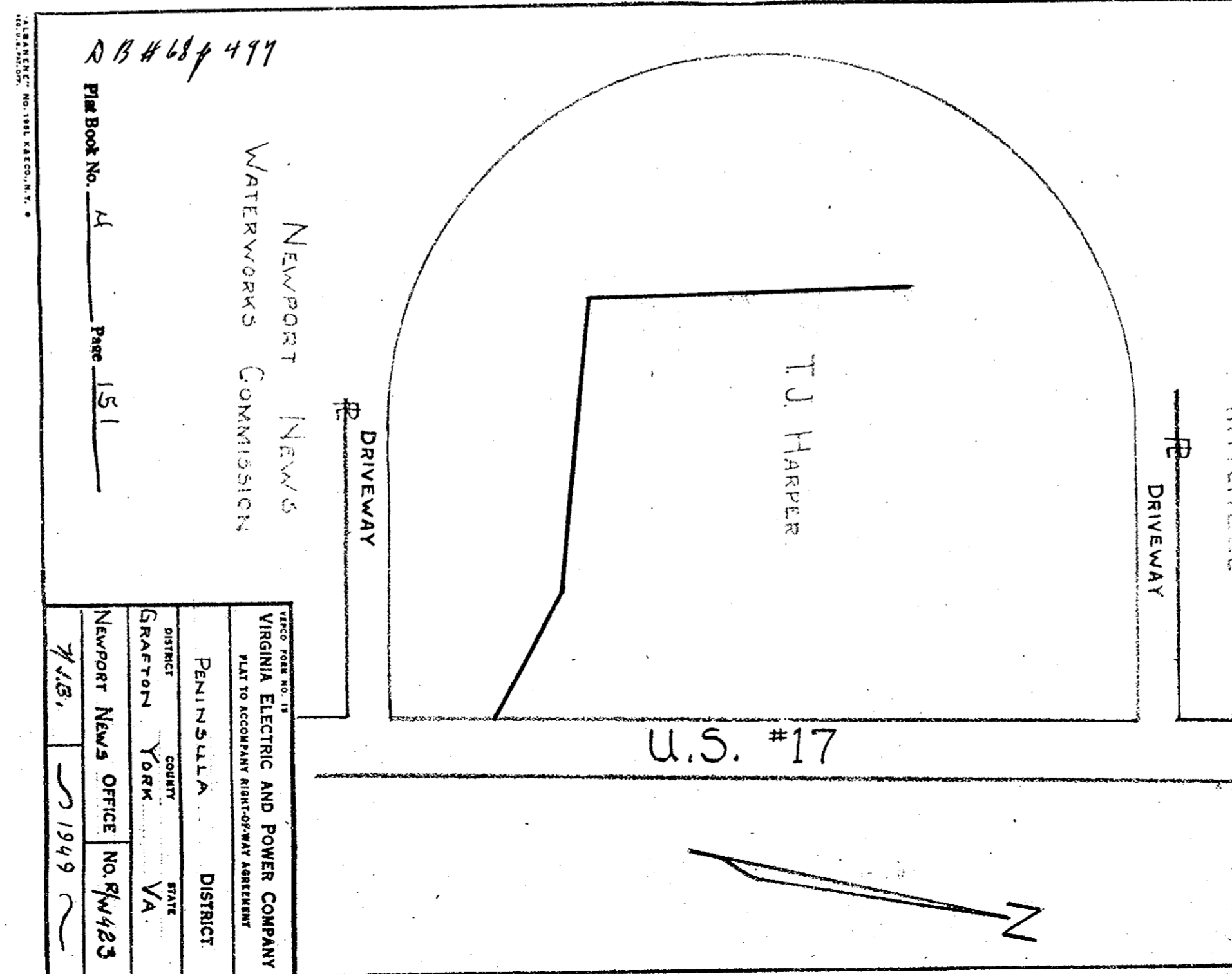
Plat Book No. 4 Page 151

ALBANY, N.Y. 12212



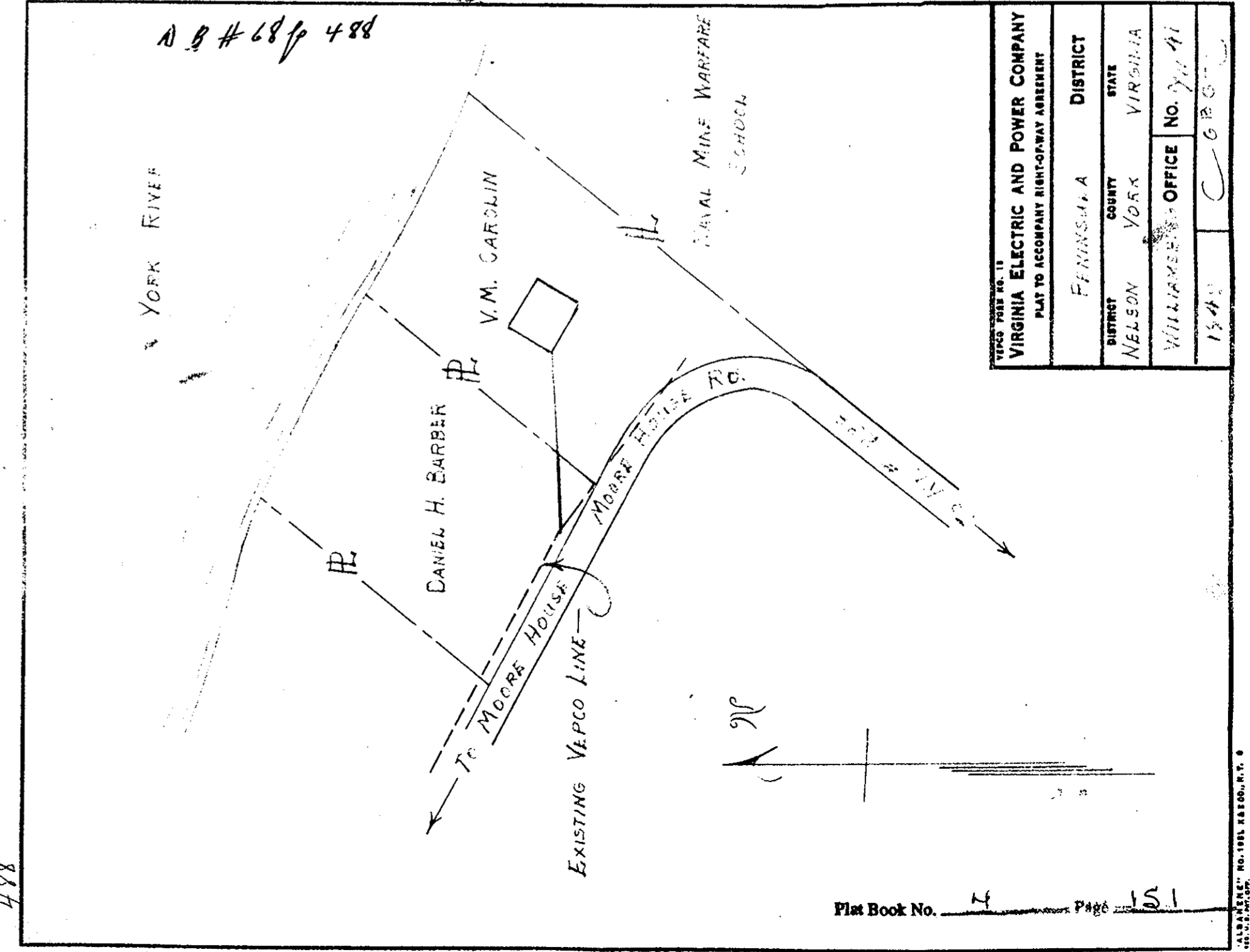
VIRGINIA ELECTRIC AND POWER COMPANY PLAT TO ACCOMPANY RIGHT-OF-WAY AGREEMENT	
PENINSULA	DISTRICT
GRAFTON	YORK
NEWPORT NEWS OFFICE	No. 1428
726	5 1949

ALBANY, N.Y. 12212



VIRGINIA ELECTRIC AND POWER COMPANY PLAT TO ACCOMPANY RIGHT-OF-WAY AGREEMENT	
PENINSULA	DISTRICT
GRAFTON	YORK
NEWPORT NEWS OFFICE	No. 1423
726	5 1949

ALBANY, N.Y. 12212



VIRGINIA ELECTRIC AND POWER COMPANY PLAT TO ACCOMPANY RIGHT-OF-WAY AGREEMENT	
PENINSULA	DISTRICT
NELSON	YORK
WILLIAMSBURG OFFICE	No. 724
1343	C 626

ALBANY, N.Y. 12212