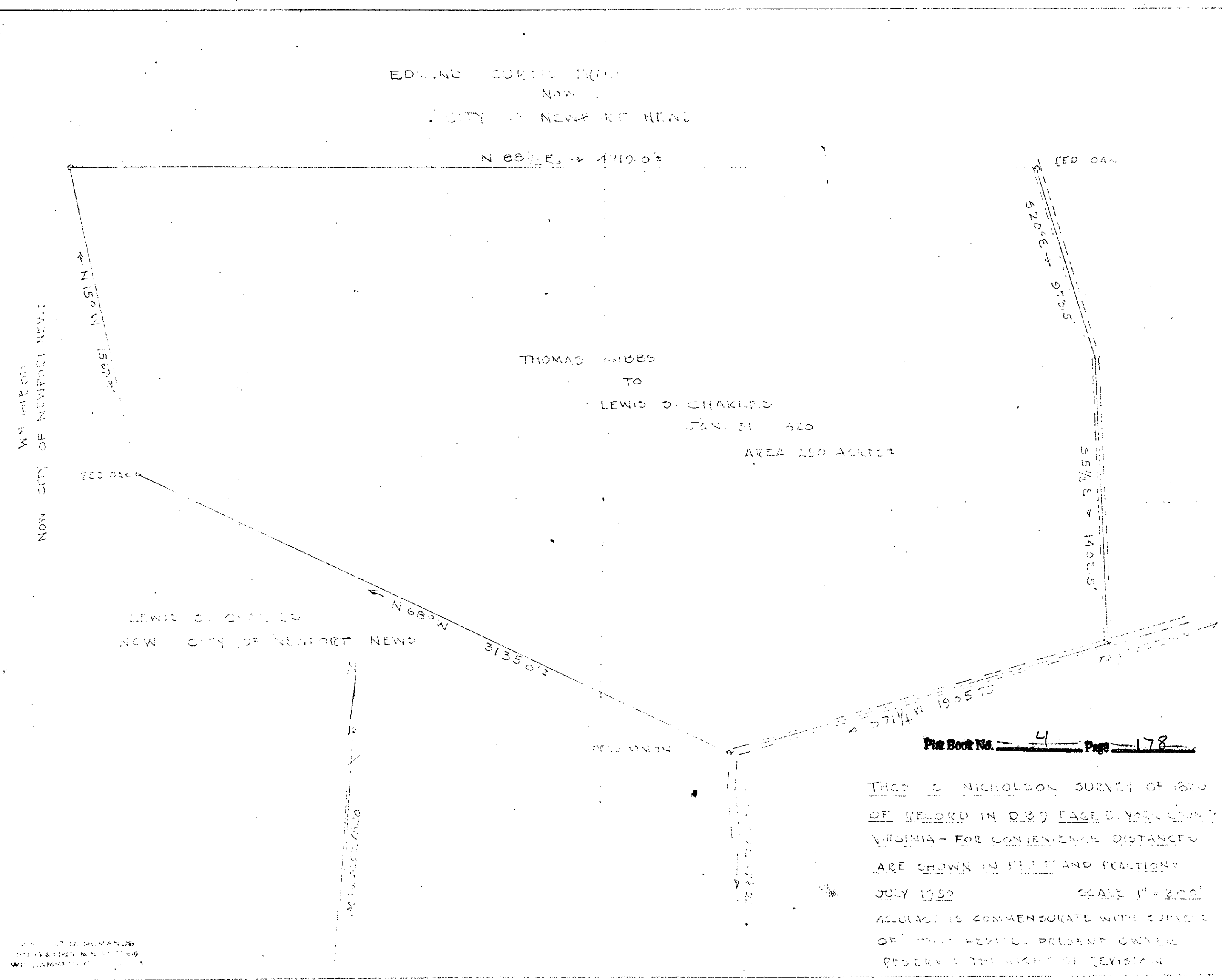
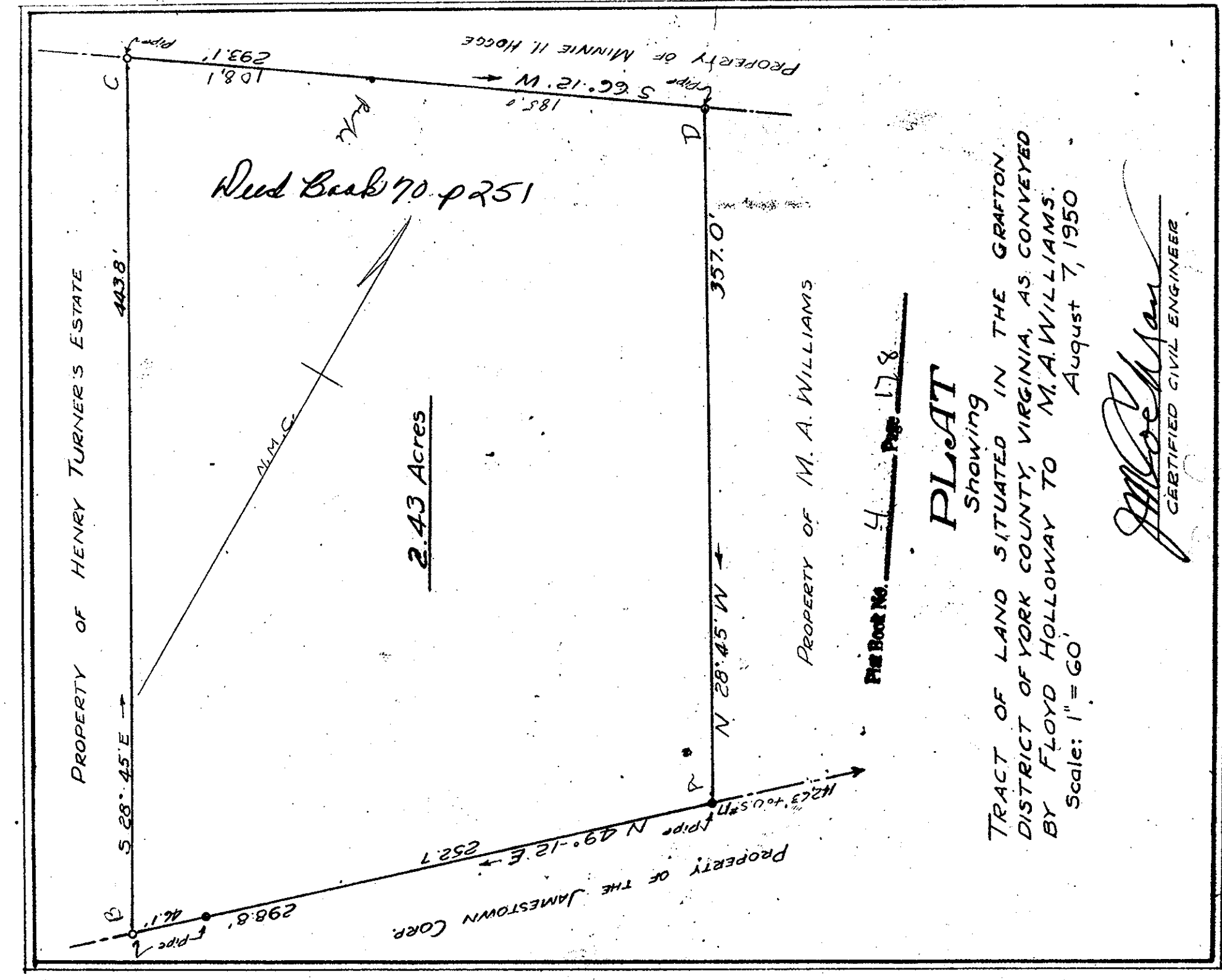


See Deed Book 70 p.197

4 178



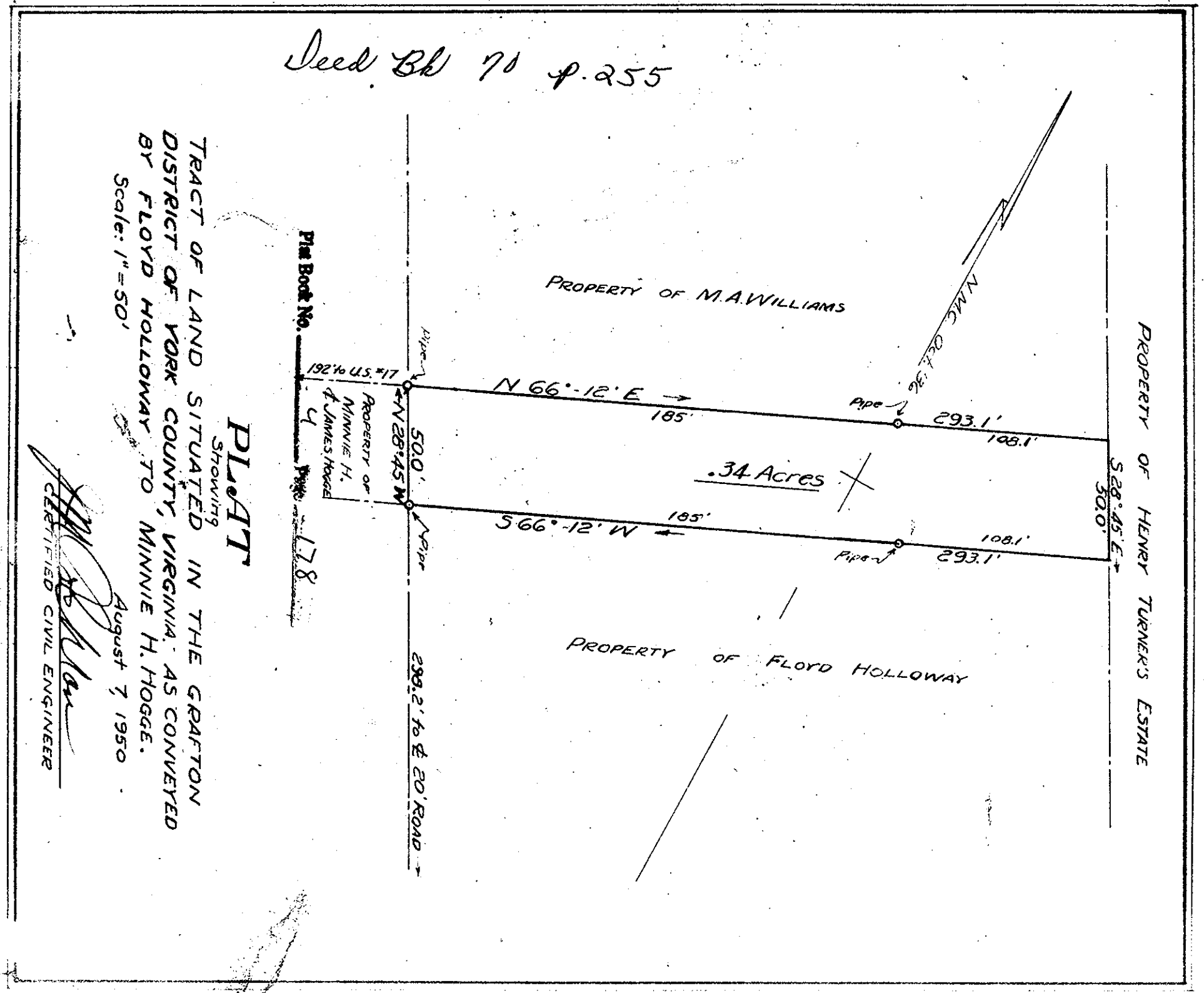
THIS IS NICHOLSON SURVEY OF 1800  
OF RECORD IN D.87 PAGES 108, 109, 110  
VIRGINIA - FOR CONTEMPORARY DISTANCES  
ARE SHOWN IN FEET AND FRACTIONS  
JULY 1950 SCALE: 1" = 200'  
ADJUSTED TO CORRECT FOR CURVATURE  
OF THE EARTH. PRESENT OWNER  
RESERVES THE RIGHT OF REVISION



PLAT

Showing  
TRACT OF LAND SITUATED IN THE GRAFTON  
DISTRICT OF YORK COUNTY, VIRGINIA, AS CONVEYED  
BY FLOYD HOLLOWAY TO M.A. WILLIAMS.  
August 7, 1950  
Scale: 1" = 60'

*W. Lee Mason*  
CERTIFIED CIVIL ENGINEER



PLAT

Showing  
TRACT OF LAND SITUATED IN THE GRAFTON  
DISTRICT OF YORK COUNTY, VIRGINIA, AS CONVEYED  
BY FLOYD HOLLOWAY TO MINNIE H. HODGE.  
August 7, 1950  
Scale: 1" = 50'

*W. Lee Mason*  
CERTIFIED CIVIL ENGINEER