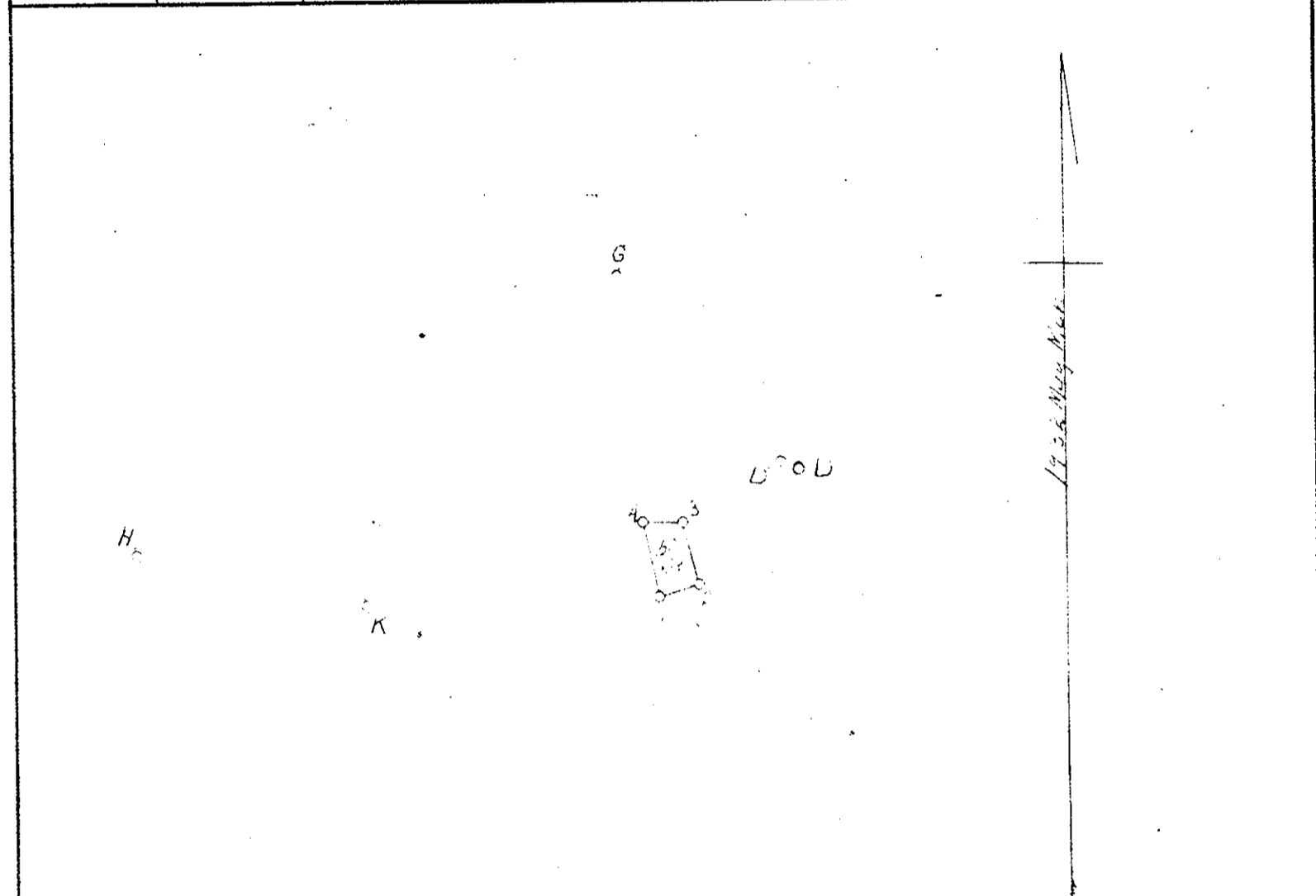


Oyster Book No. 3, page 339

DATE OF APPLICATION	COMMONWEALTH OF VIRGINIA COMMISSION OF FISHERIES	FOR OFFICE USE
DATE OF ASSIGNMENT		PLAT NO.
COUNTY RECORDED IN		MAP NO. 241
BOOK PAGE		FILE NO.

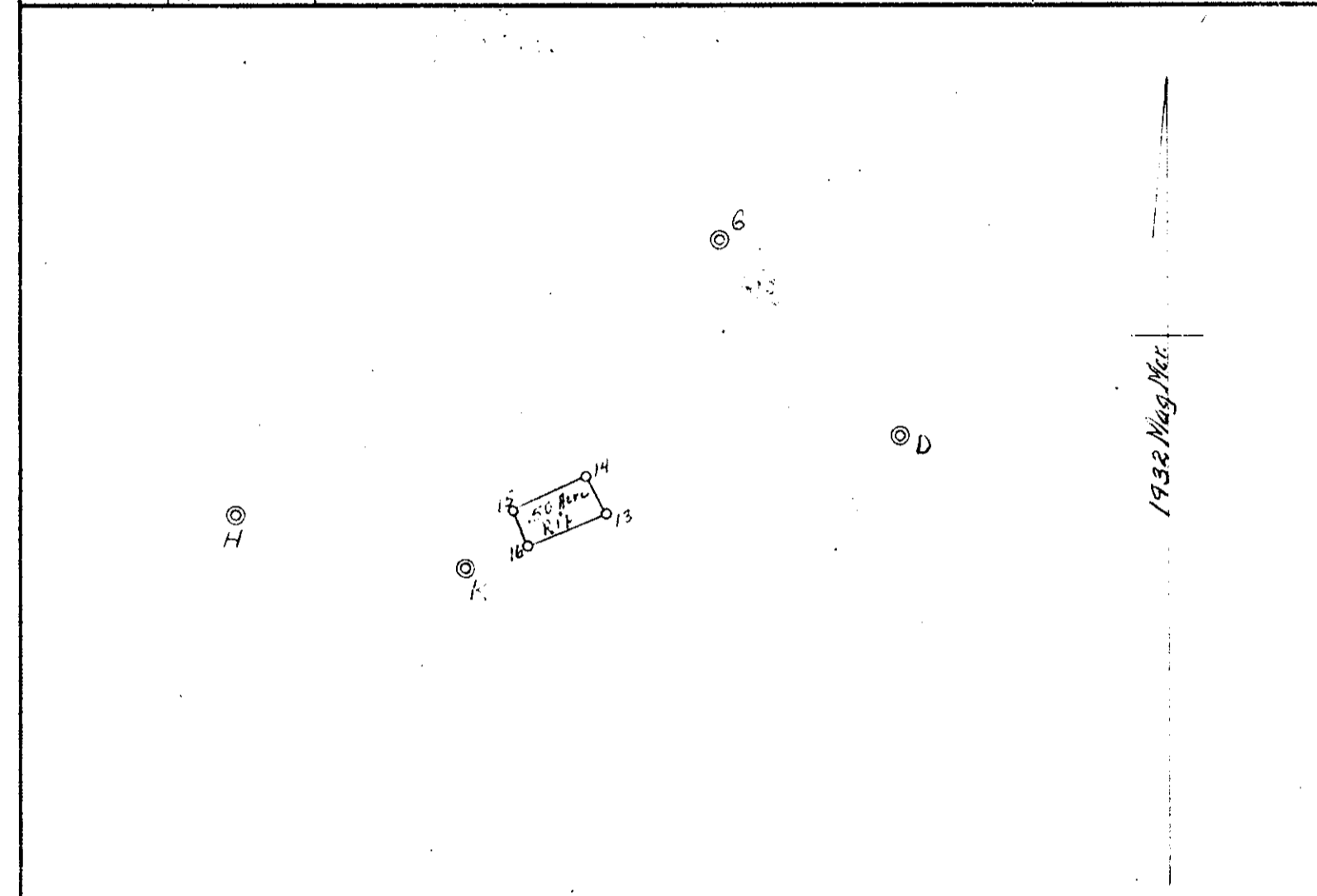


D	D'	G
360°00'	G	360°00'
336°43'	D	1°40'
D	155°03'	360°00'
1	262°52'	33°38'
2	255°04'	26°28'
3	278°57'	26°14'
4	287°47'	35°05'

Riparian
OYSTER PLANTING GROUND
 OF
Willie Mae Basse
 IN
Cheesemans Creek
 District No. 15 York COUNTY
 Scale 5000 1950
 Surveyed by J. K. Sinclair, C.S. 445
 CERTIFIED SURVEYOR

Oyster Book No. 3, page 339

DATE OF APPLICATION	COMMONWEALTH OF VIRGINIA COMMISSION OF FISHERIES	FOR OFFICE USE
DATE OF ASSIGNMENT		PLAT NO.
COUNTY RECORDED IN		MAP NO. 241
BOOK PAGE		FILE NO.



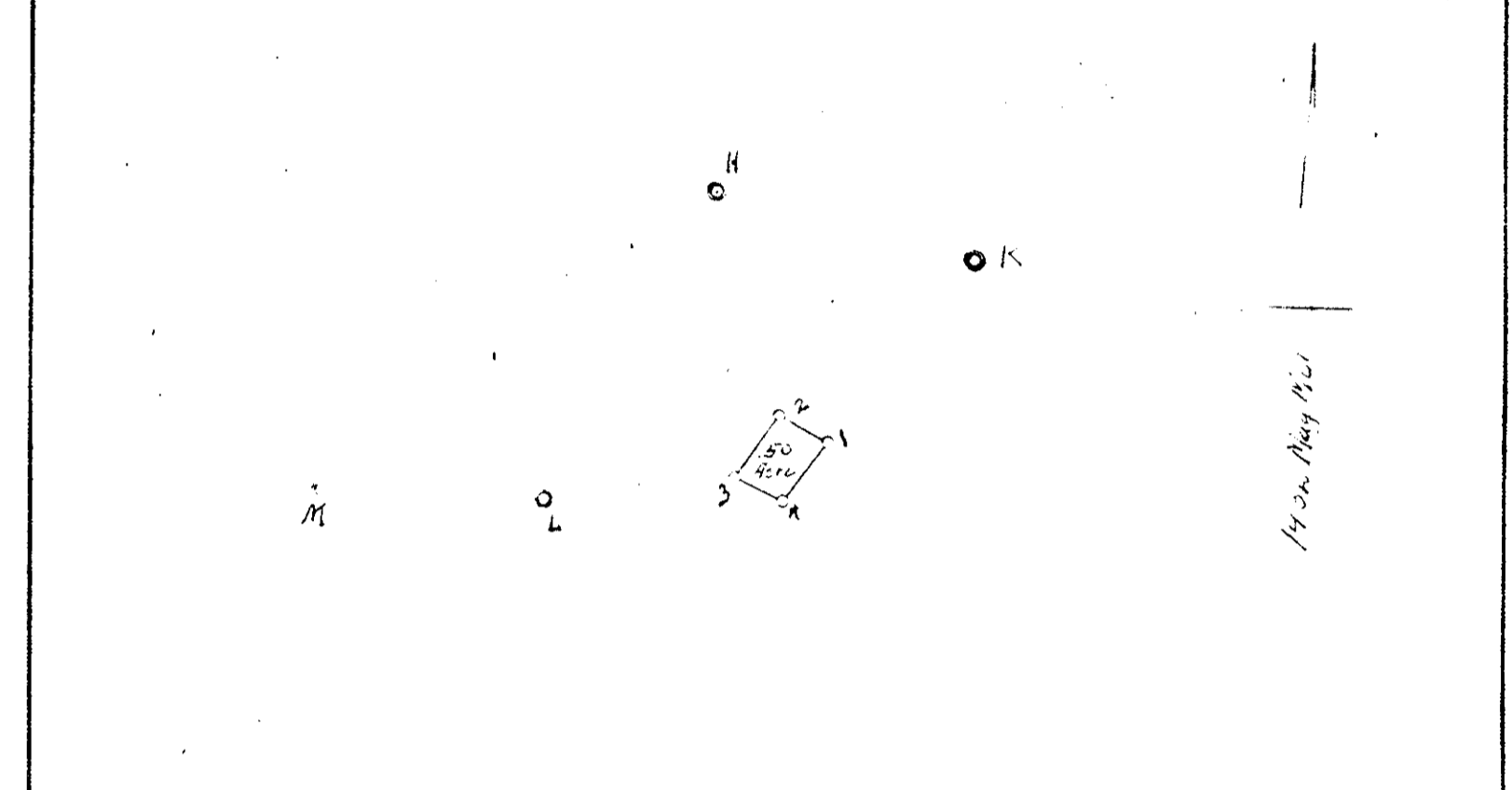
H	K
360°00'	G
43°35'	K
H	0°20'
29°39'	13
25°45'	14
28°53'	15
35°29'	16
195°52'	nail in Δ on oak 9 strides distant
281°46'	30" oak 24 strides distant
56°49'	W gable Phillips hse
146°06'	E gable 2 story T shape hse up creek

Stations H and K are cement blocks about 2" underground Marked thus \boxplus

Riparian
OYSTER PLANTING GROUND
 OF
H. O. Green
 IN
Cheesemans Creek
 District No. 15 York COUNTY
 Scale 5000 1950
 Surveyed by J. K. Sinclair, C.S. 445
 CERTIFIED SURVEYOR

Oyster Book No. 3, page 340

DATE OF APPLICATION	COMMONWEALTH OF VIRGINIA COMMISSION OF FISHERIES	FOR OFFICE USE
DATE OF ASSIGNMENT		PLAT NO.
COUNTY RECORDED IN		MAP NO. 241
BOOK PAGE		FILE NO.



H	L	K
360°00'	G	360°00'
95°08'	M	0°20'
103°08'	H	243°29'
117°45'	1	306°40'
106°18'	2	155°14'
	3	302°43'
	4	242°37'

Riparian
OYSTER PLANTING GROUND
 OF
R. Hayden Smith
 IN
Cheesemans Creek
 District No. 15 York COUNTY
 Scale 5000 1950
 Surveyed by J. K. Sinclair, C.S. 445
 CERTIFIED SURVEYOR