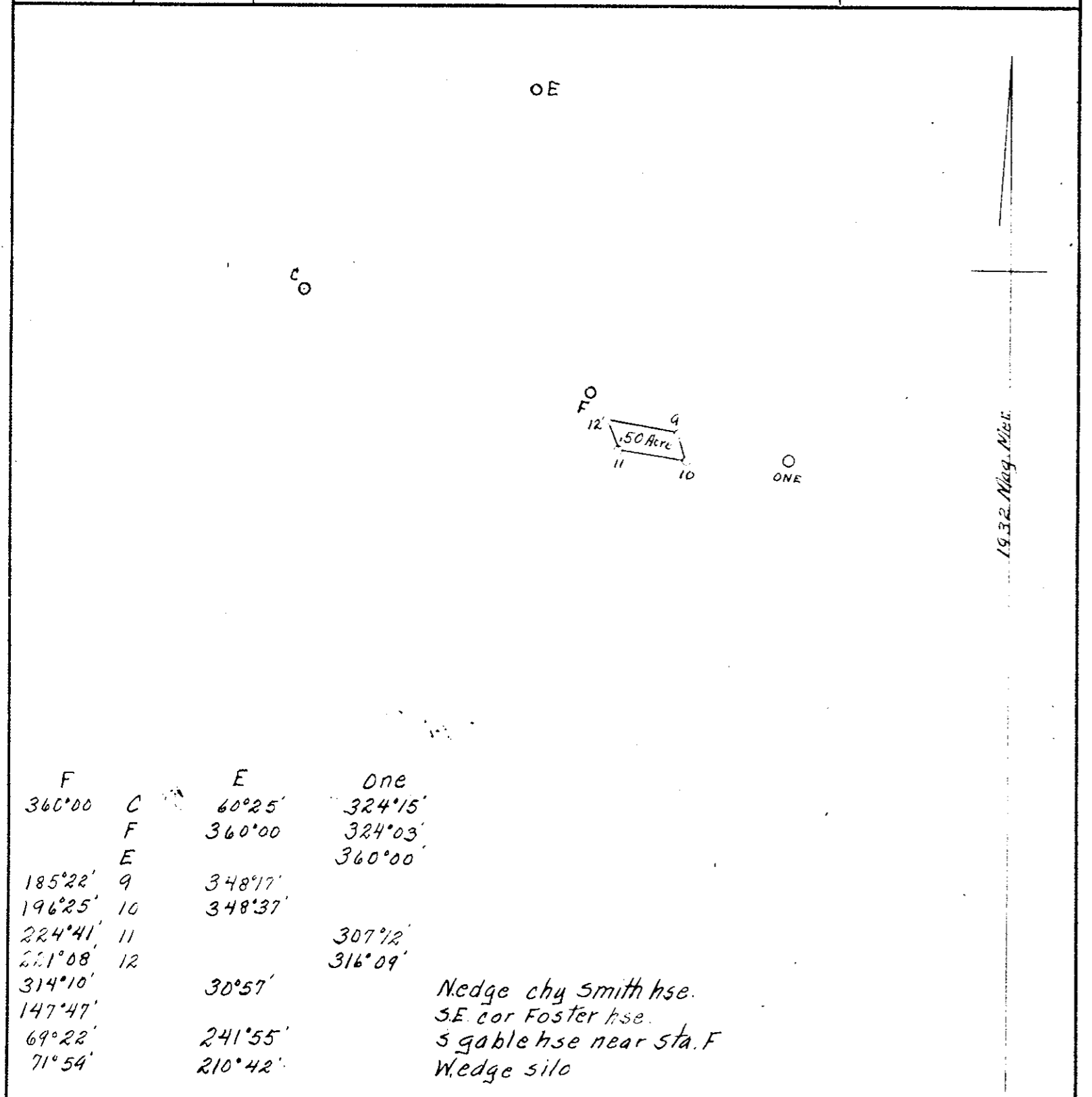


Oyster Book No. 3, page 340

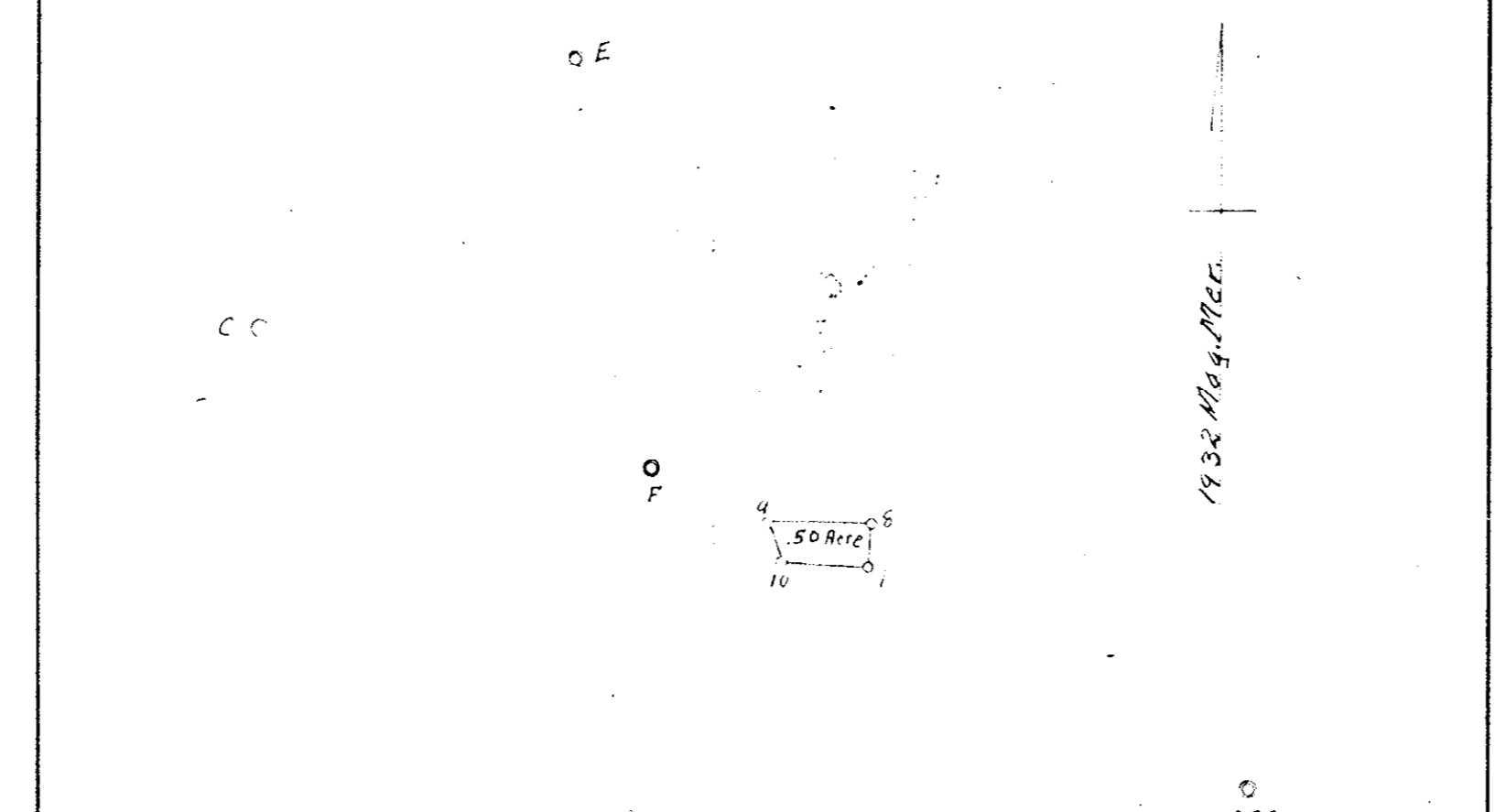
DATE OF APPLICATION	<b>COMMONWEALTH OF VIRGINIA COMMISSION OF FISHERIES</b>	FOR OFFICE USE
DATE OF ASSIGNMENT		PLAT NO.
COUNTY RECORDED IN		MAP NO. 241
BOOK		FILE NO.
PAGE		



Riparian  
**OYSTER PLANTING GROUND**  
OF  
James A. Brewer  
IN  
Cheesmans Creek  
District No. 15 York COUNTY  
Scale 5000 Oct 31 1950  
Surveyed by J.K. Sinsman C.L.S.-445-  
CERTIFIED SURVEYOR

Oyster Book No. 3, page 341

DATE OF APPLICATION	<b>COMMONWEALTH OF VIRGINIA COMMISSION OF FISHERIES</b>	FOR OFFICE USE
DATE OF ASSIGNMENT		PLAT NO.
COUNTY RECORDED IN		MAP NO. 241
BOOK		FILE NO.
PAGE		

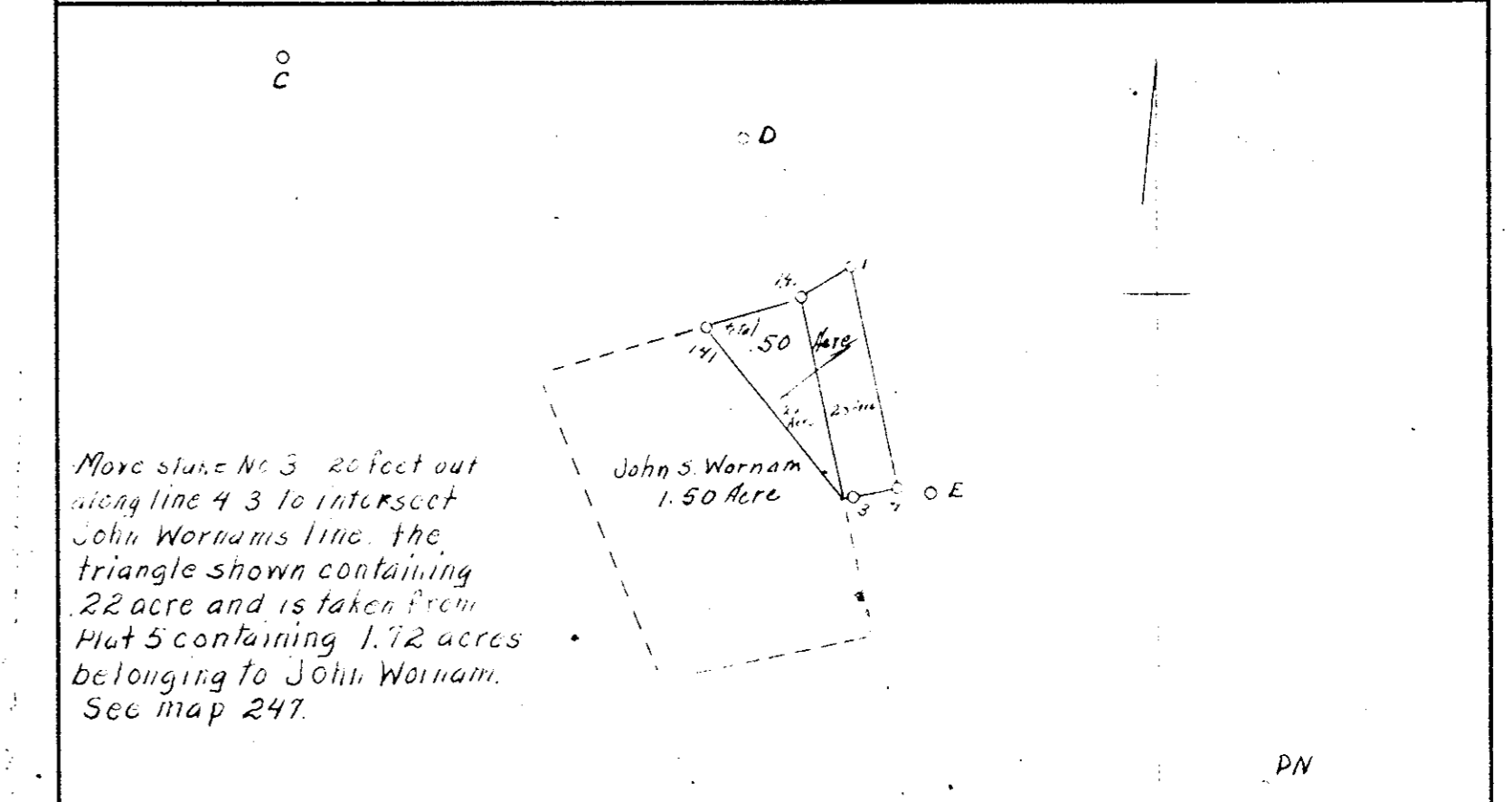


Stations C and F are concrete Monuments  
E - one are pipe

Riparian  
**OYSTER PLANTING GROUND**  
OF  
S.D. Ironmonger  
IN  
Cheesmans Creek  
District No. 15 York COUNTY  
Scale 5000 Oct 31 1950  
Surveyed by J.K. Sinsman C.L.S.-445-  
CERTIFIED SURVEYOR

Oyster Book No. 3, page 341

DATE OF APPLICATION	<b>COMMONWEALTH OF VIRGINIA COMMISSION OF FISHERIES</b>	FOR OFFICE USE
DATE OF ASSIGNMENT		PLAT NO.
COUNTY RECORDED IN		MAP NO.
BOOK		FILE NO.
PAGE		



More stake No. 3 20 feet out along line 4-3 to intersect John Wornams line. The triangle shown containing .22 acre and is taken from Plat 5 containing 1.72 acres belonging to John Wornam. See map 247.

151°13' stunted cedar 4 strides  
6°10' kitchen chy Rob Wainwright  
174°10' SW cor. Harrison's hse.

Riparian  
**OYSTER PLANTING GROUND**  
OF  
N. Waldo Harrison  
IN  
Partridge Creek  
District No. 16 York COUNTY  
Scale 2000 Nov 8 1950  
Surveyed by J.K. Sinsman C.L.S.-445-  
CERTIFIED SURVEYOR