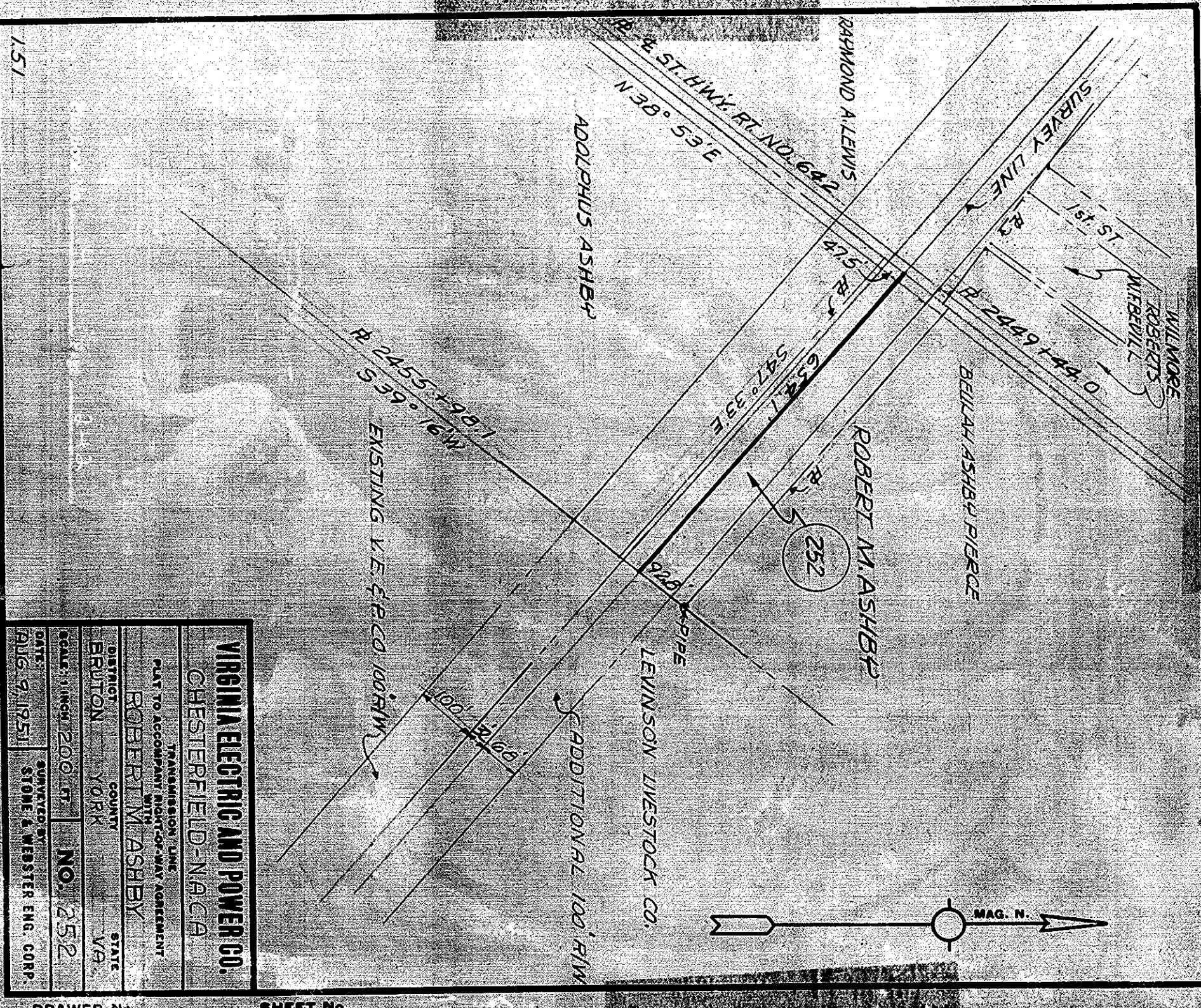


VIRGINIA ELECTRIC AND POWER CO.
CHESTERFIELD-N.A.C.A.
 TRANSMISSION LINE
 PLAT TO ACCOMPANY RIGHT-OF-WAY AGREEMENT
 WITH
MARTHA S. HENDERSON
 DISTRICT COUNTY STATE
 BRUTON YORK VA
 SCALE: 1 INCH = 400 FT. **NO. 227 B**
 DATE: JULY 31, 1951 SURVEYED BY STONE & WEBSTER ENG. CORP.

DRAWER No. SHEET No.

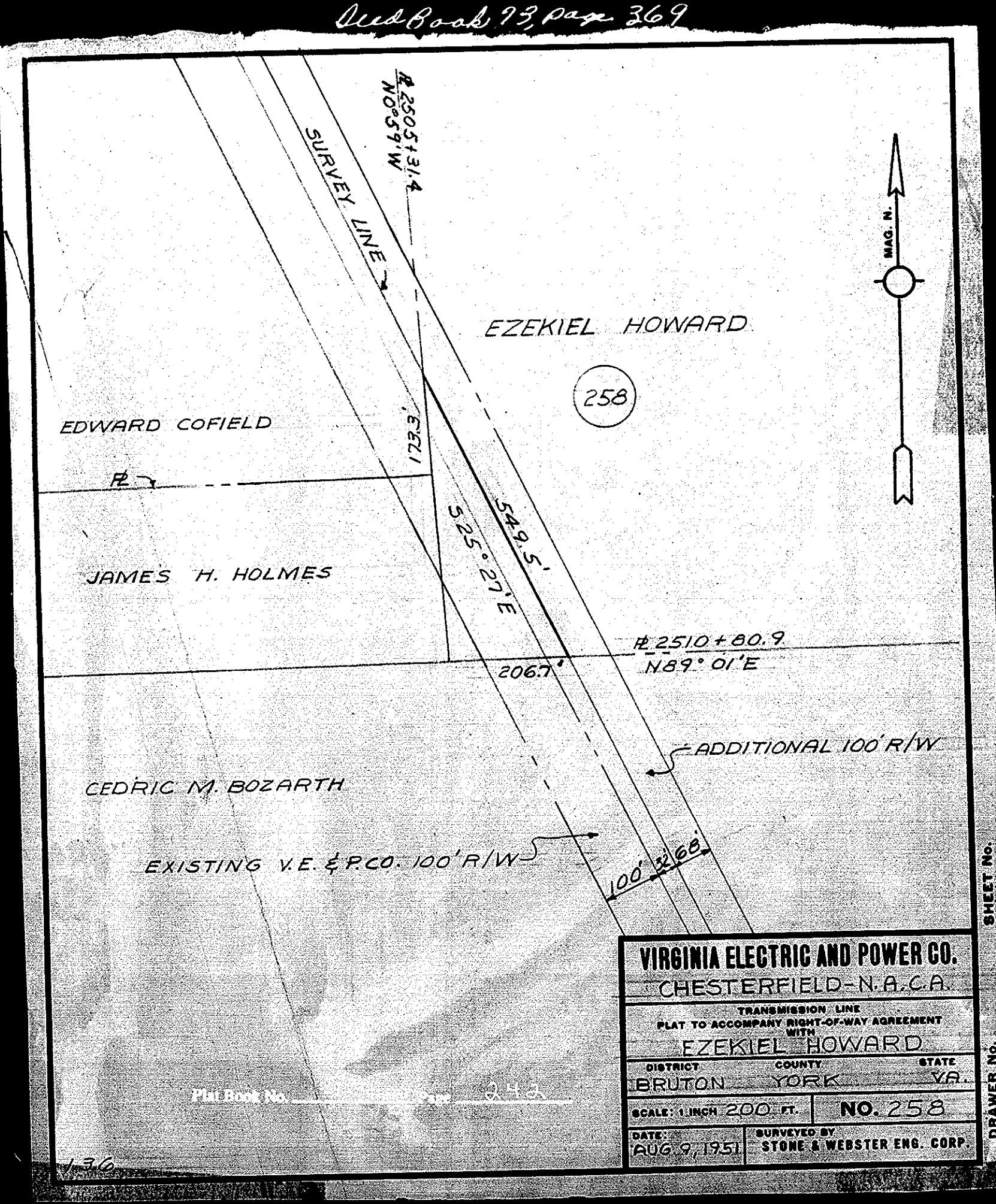


VIRGINIA ELECTRIC AND POWER CO.
CHESTERFIELD-N.A.C.A.
 TRANSMISSION LINE
 PLAT TO ACCOMPANY RIGHT-OF-WAY AGREEMENT
 WITH
ROBERT M. ASHBY
 DISTRICT COUNTY STATE
 BRUTON YORK VA
 SCALE: 1 INCH = 200 FT. **NO. 252**
 DATE: AUG. 9, 1951 SURVEYED BY STONE & WEBSTER ENG. CORP.

DRAWER No. SHEET No.

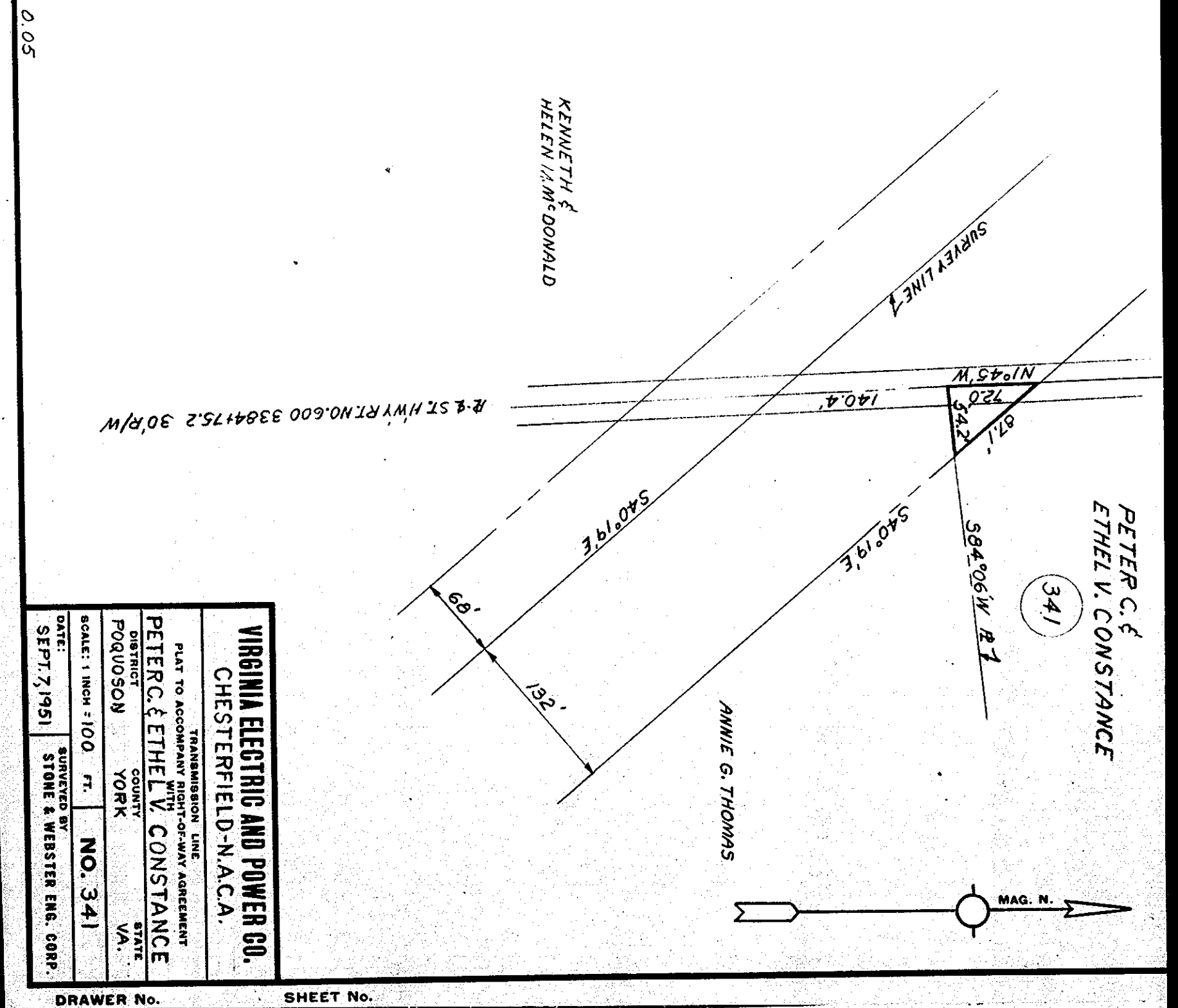
Deed Book 13, page 265

Deed Book 13, page 367



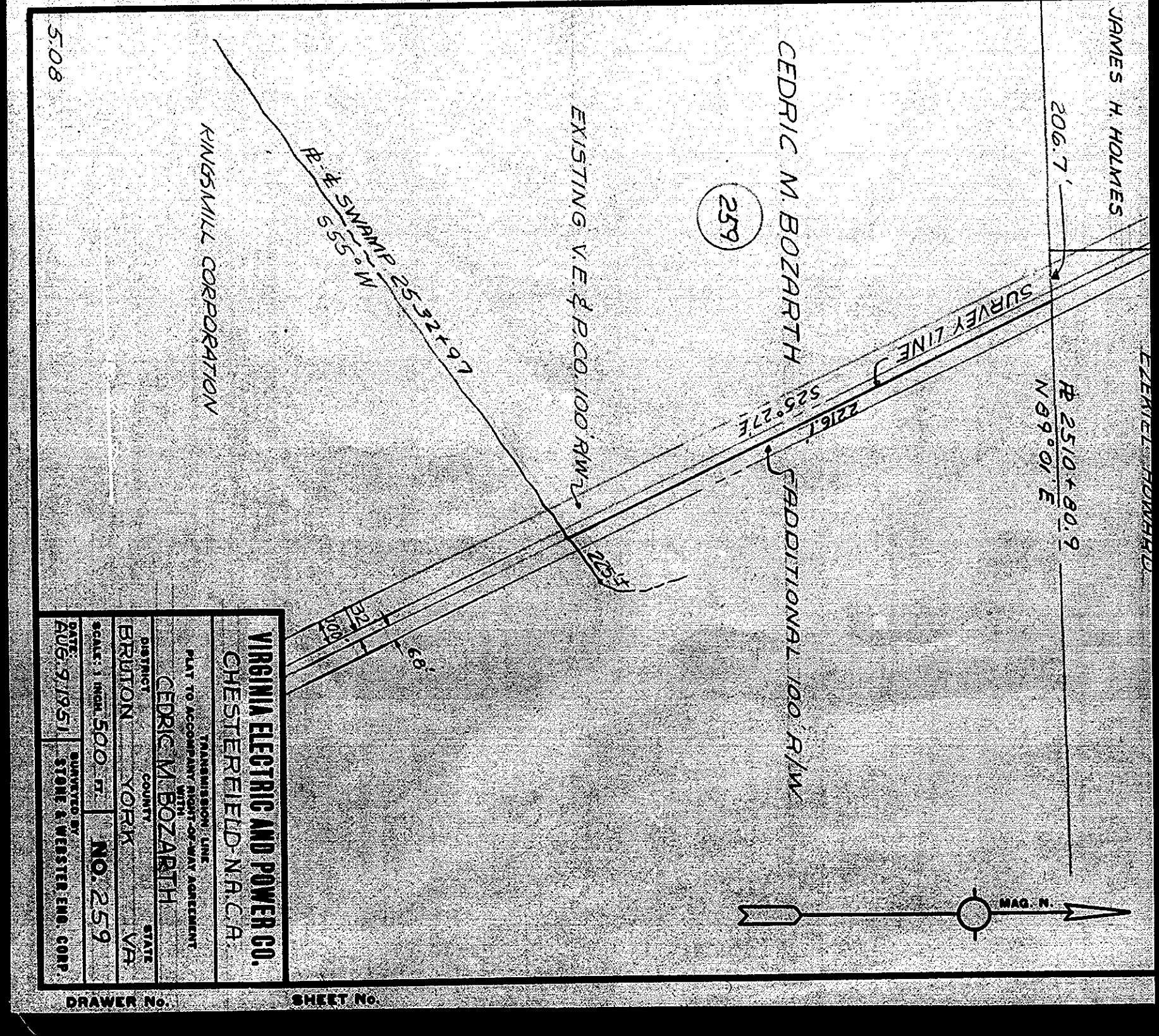
VIRGINIA ELECTRIC AND POWER CO.
CHESTERFIELD-N.A.C.A.
 TRANSMISSION LINE
 PLAT TO ACCOMPANY RIGHT-OF-WAY AGREEMENT
 WITH
EZEKIEL HOWARD
 DISTRICT COUNTY STATE
 BRUTON YORK VA
 SCALE: 1 INCH = 200 FT. **NO. 258**
 DATE: AUG. 9, 1951 SURVEYED BY STONE & WEBSTER ENG. CORP.

DRAWER No. SHEET No.



VIRGINIA ELECTRIC AND POWER CO.
CHESTERFIELD-N.A.C.A.
 TRANSMISSION LINE
 PLAT TO ACCOMPANY RIGHT-OF-WAY AGREEMENT
 WITH
PETER C. & ETHEL V. CONSTANCE
 DISTRICT COUNTY STATE
 BRUTON YORK VA
 SCALE: 1 INCH = 100 FT. **NO. 341**
 DATE: SEPT. 7, 1951 SURVEYED BY STONE & WEBSTER ENG. CORP.

DRAWER No. SHEET No.



VIRGINIA ELECTRIC AND POWER CO.
CHESTERFIELD-N.A.C.A.
 TRANSMISSION LINE
 PLAT TO ACCOMPANY RIGHT-OF-WAY AGREEMENT
 WITH
CEDRIC M. BOZARTH
 DISTRICT COUNTY STATE
 BRUTON YORK VA
 SCALE: 1 INCH = 500 FT. **NO. 259**
 DATE: SEPT. 7, 1951 SURVEYED BY STONE & WEBSTER ENG. CORP.

DRAWER No. SHEET No.