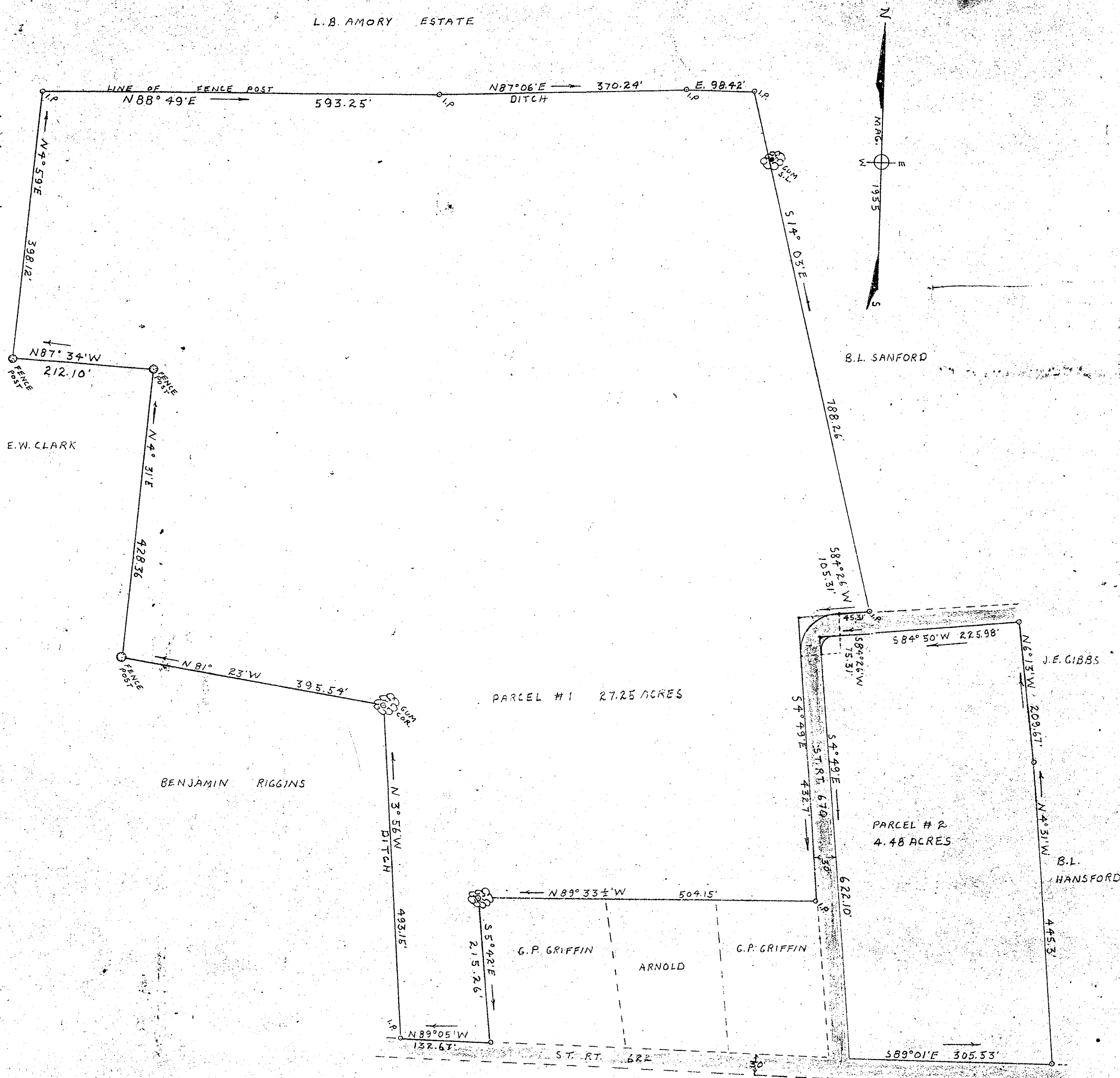


L. B. AMORY ESTATE



SAMUEL J. GLASS & MARTHA M. GLASS PARCEL # 1 & 2
 PLAT SHOWING 2 PARCELS OF LAND BELONGING TO S. J. & M. M. GLASS H&W.
 LOCATED IN SEAFORD, GRAFTON DISTRICT, YORK COUNTY, VIRGINIA.
 SURVEYED, MAY 1955 SCALE 1" = 100'

Received June 10, 1955
 and admitted to record according
 to law.

See D. B. 97-281

Melissa J. Boyant
 Clerk



Sig. Wetherill D. Thomas