

EZEKIEL LEE

TRACT OF LAND BELONGING TO EZEKIEL LEE SITUATE  
IN YORK COUNTY, VA.  
SURVEYED MARCH, 1957

SCALE 1" = 200'  
W.D. THOMAS, C.L.S., S.F.S.  
W.D. THOMAS, D. F. THOMAS

LEGEND - O - CON. MON.  
□ - IRON PIPES

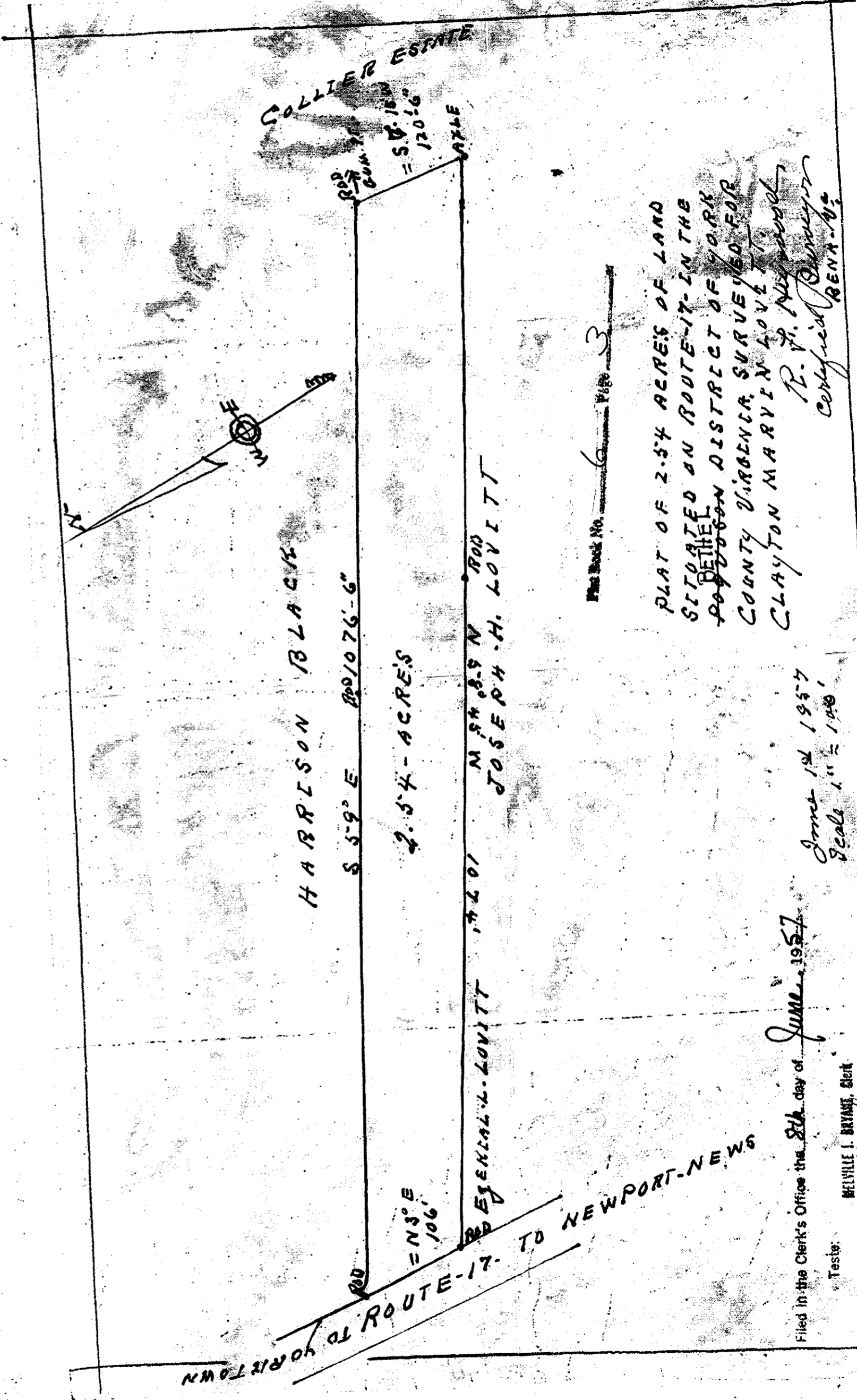
NOTE - PROPERTY LINE OCCUPATIONAL

Plat Book No. 6 Page 3

Filed in the Clerk's Office the 5 day of April, 1957

Teste: MEVILLE I. DEWANT, Clerk

*M. I. Dewant*



HARRISON BLACK

2.54 - ACRES

EGENIAL L. LOVITT 74201 M 88° 59' W 100'  
JOSEPH H. LOVITT

Filed in the Clerk's Office the 28 day of June, 1957

Teste: MEVILLE I. DEWANT, Clerk

*M. I. Dewant*

June 1<sup>st</sup> 1957  
Scale 1" = 100'

Plat Book No. 6 Page 3

PLAT OF 2.54 ACRES OF LAND  
SITUATED ON ROUTE 17, IN THE  
POPELTON DISTRICT OF YORK  
COUNTY VIRGENIA, SURVEYED FOR  
CLAYTON MARYE LOVETT

R. F. Newland  
Certified Surveyor  
RENA-45