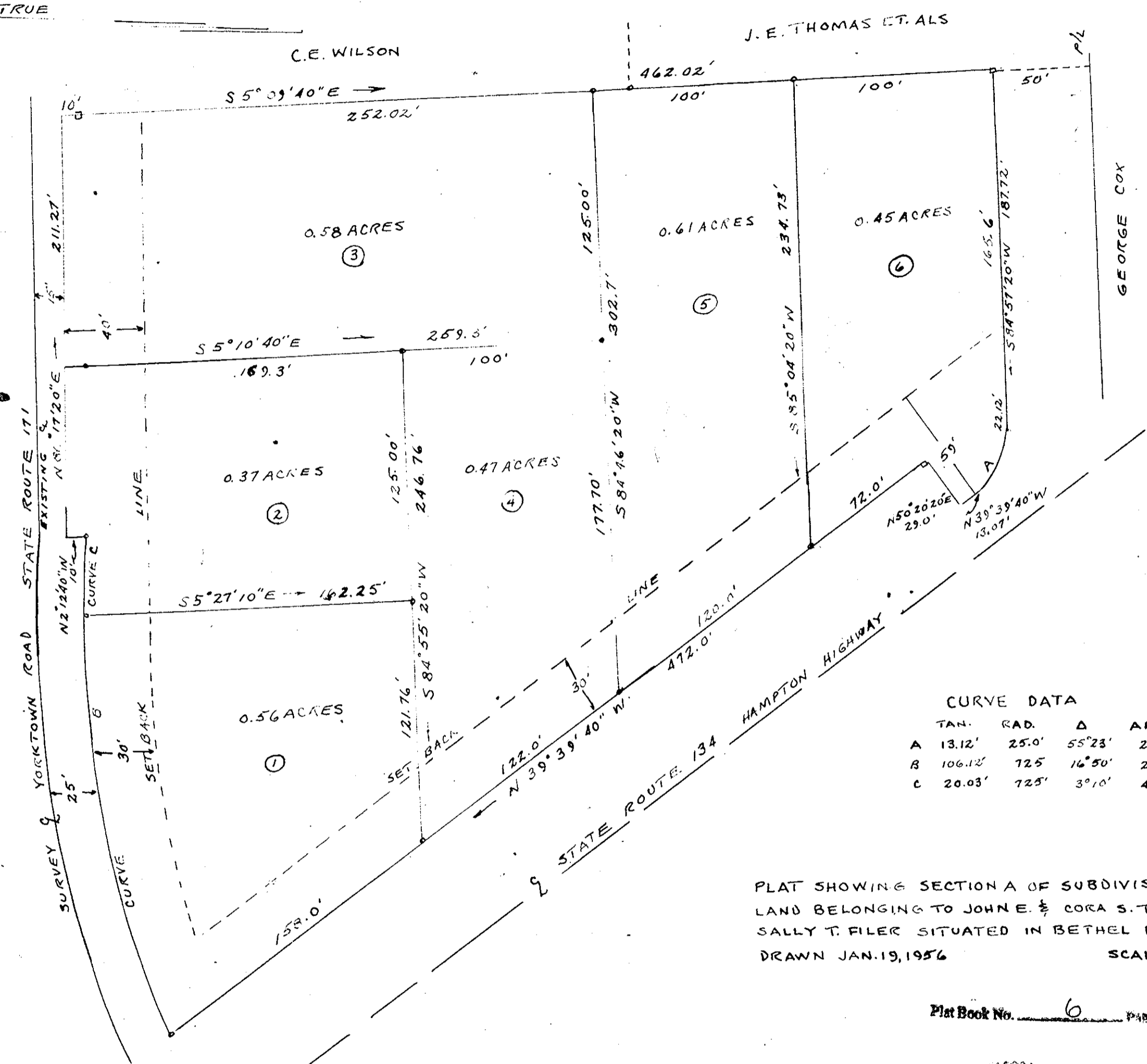
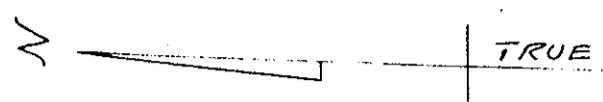


THOMAS TERRE



CURVE DATA

TAN.	RAD.	Δ	ARC
A 13.12'	25.0'	55°23'	24.16'
B 106.12'	725'	16°50'	213.0'
C 20.03'	725'	3°10'	40.07'

PLAT SHOWING SECTION A OF SUBDIVISION BEING PART OF LAND BELONGING TO JOHN E. & CORA S. THOMAS, HORACE A. & SALLY T. FILER SITUATED IN BETHEL DISTRICT, YORK COUNTY, VA. DRAWN JAN. 19, 1956 SCALE 1"=50'

Plat Book No. 6 Page 8

APPROVED
 YORK COUNTY BOARD OF SUPERVISORS
 BY A. T. Jennings
 PLAT APPROVING AGENT.

DATE 1-27-56
 VARIATIONS APPROVED
 DATE Oct. 30, 1957



Wethell D. Thomas

Made in the Clerk's Office the 30th day of October, 1957
 Teate: MEVILLE L. BRYANT, Clerk
Edith M. Rouse D.C.

See late corrections of this Plat. M.L.O.