

SUBDIVISION CERTIFICATE

THE SUBDIVISION OF LAND AS SHOWN ON THIS PLAT IS WITH THE FREE CONSENT AND IN ACCORDANCE WITH THE DESIRE OF THE UNDERSIGNED OWNER QUEENS LAKE DEVELOPMENT COMPANY, INC. MANAGER

STATE OF VIRGINIA CITY OF WILLIAMSBURG TO-WIT:

A NOTARY PUBLIC IN AND FOR THE CITY AND STATE AFORESAID, DO HEREBY CERTIFY THAT MANAGER WHOSE NAME IS SIGNED TO THE ABOVE CERTIFICATE HAS ACKNOWLEDGED THE SAME BEFORE ME IN MY CITY AFORESAID GIVEN UNDER MY HAND AND SEAL THIS 14 DAY OF November 1958

R. C. Benschooten, NOTARY PUBLIC MY COMMISSION EXPIRES My Commission Expires October 25, 1962

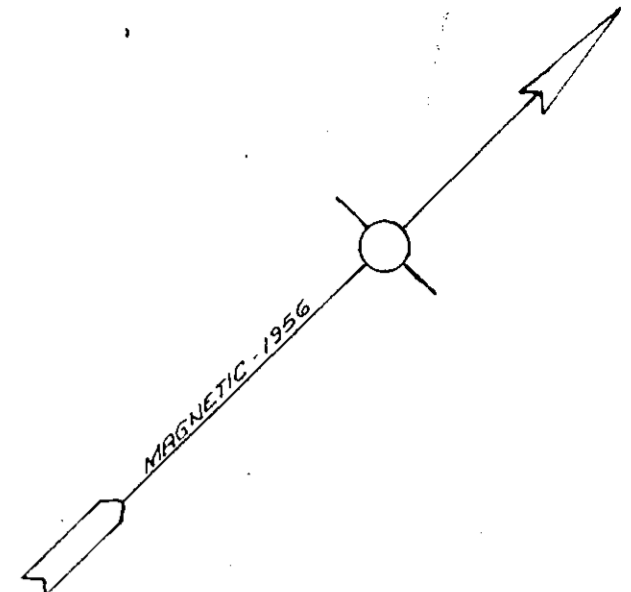
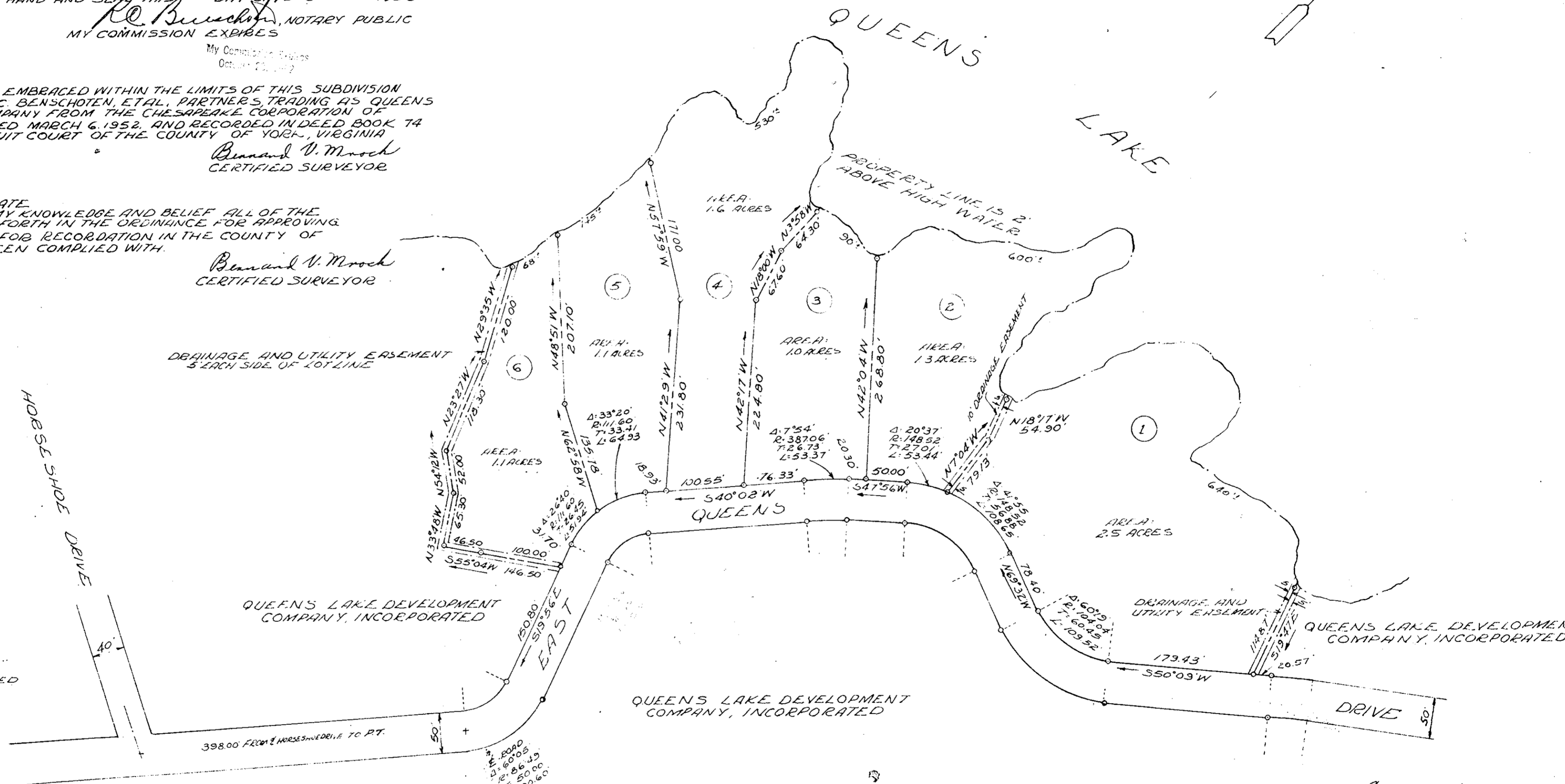
SOURCE OF TITLE THE PROPERTY EMBRACED WITHIN THE LIMITS OF THIS SUBDIVISION WAS CONVEYED TO R. C. BENSCHOTEN, ETAL, PARTNERS TRADING AS QUEENS LAKE DEVELOPMENT COMPANY FROM THE CHESAPEAKE CORPORATION OF VIRGINIA BY DEED DATED MARCH 6, 1952, AND RECORDED IN DEED BOOK 74 PAGE 154, IN THE CIRCUIT COURT OF THE COUNTY OF YORK, VIRGINIA

Bennard V. Mroch CERTIFIED SURVEYOR

ENGINEERS CERTIFICATE TO THE BEST OF MY KNOWLEDGE AND BELIEF ALL OF THE REQUIREMENTS AS SET FORTH IN THE ORDINANCE FOR APPROVING PLATS OF SUBDIVISIONS FOR RECORDATION IN THE COUNTY OF YORK, VIRGINIA, HAVE BEEN COMPLIED WITH.

Bennard V. Mroch CERTIFIED SURVEYOR

DRAINAGE AND UTILITY EASEMENT 5' EACH SIDE OF LOT LINE



SECTION B UNDEVELOPED

QUEENS LAKE DEVELOPMENT COMPANY, INCORPORATED

QUEENS LAKE DEVELOPMENT COMPANY, INCORPORATED

QUEENS LAKE DEVELOPMENT COMPANY, INCORPORATED

Filed in the Clerk's Office the 3rd day of Feb 1959

Testes MELVILLE I. BRYANT, Clerk M. J. Bryant, D. O.

Plat Book No. 6 Page 32

APPROVED

YORK COUNTY BOARD OF SUPERVISORS WILLIAM SCHIFFNER PLAT APPROVING AGENY DATE January 27, 1959 VARIATIONS APPROVED DATE

QUEENS LAKE DEVELOPMENT COMPANY INC. BRUTON DISTRICT, YORK COUNTY, VA. PLAT SHOWING DEVELOPMENT OF SECTION C FRONTING ON EAST LAKE SHORE SCALE 1"=100' NOVEMBER 25, 1958

M. MANUS, MROCH & M. MANUS CIVIL ENGINEERS - LAND SURVEYORS WILLIAMSBURG, VIRGINIA

IRON PIPE MARKERS SHOWN THUS - o

