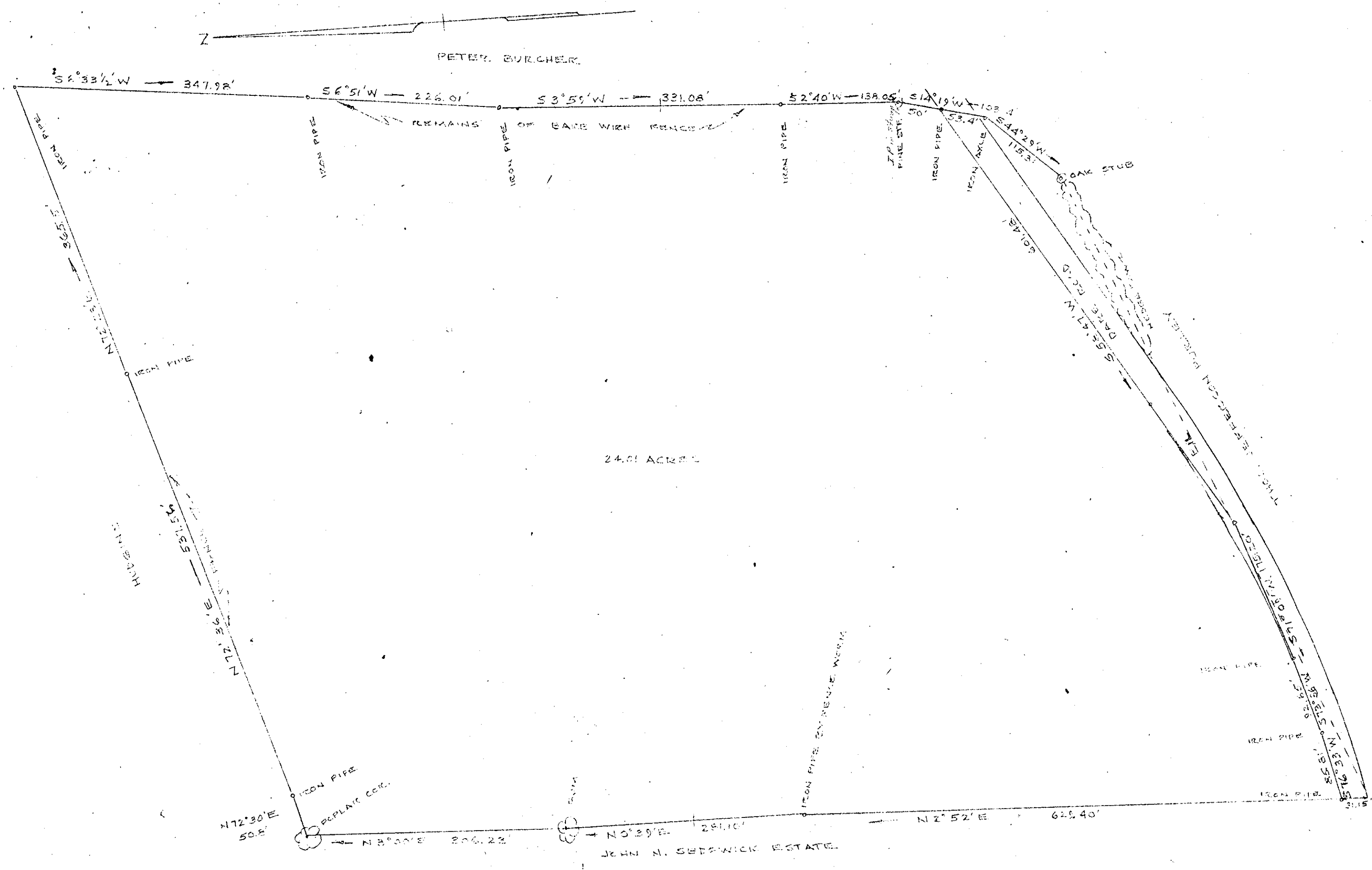


66



PLAN SHOWING PARCEL OF LAND FORMERLY BEING THE JOSEPH SPOCKLET ESTATE
 SITUATED ON DARE ROAD IN YORK COUNTY, VA.
 SURVEYED JUNE, 1957 SCALE 1"=100'

From original jointly by
 David E. Crockett and Wendell J. Crockett
 Dec. 4, 1957

Book No. 6 Page 66

Filed in the Clerk's Office this 4th day of December, 1959

Teste:
 MELVILLE I. BRYANT, Clerk
E. J. [Signature] D. C.

