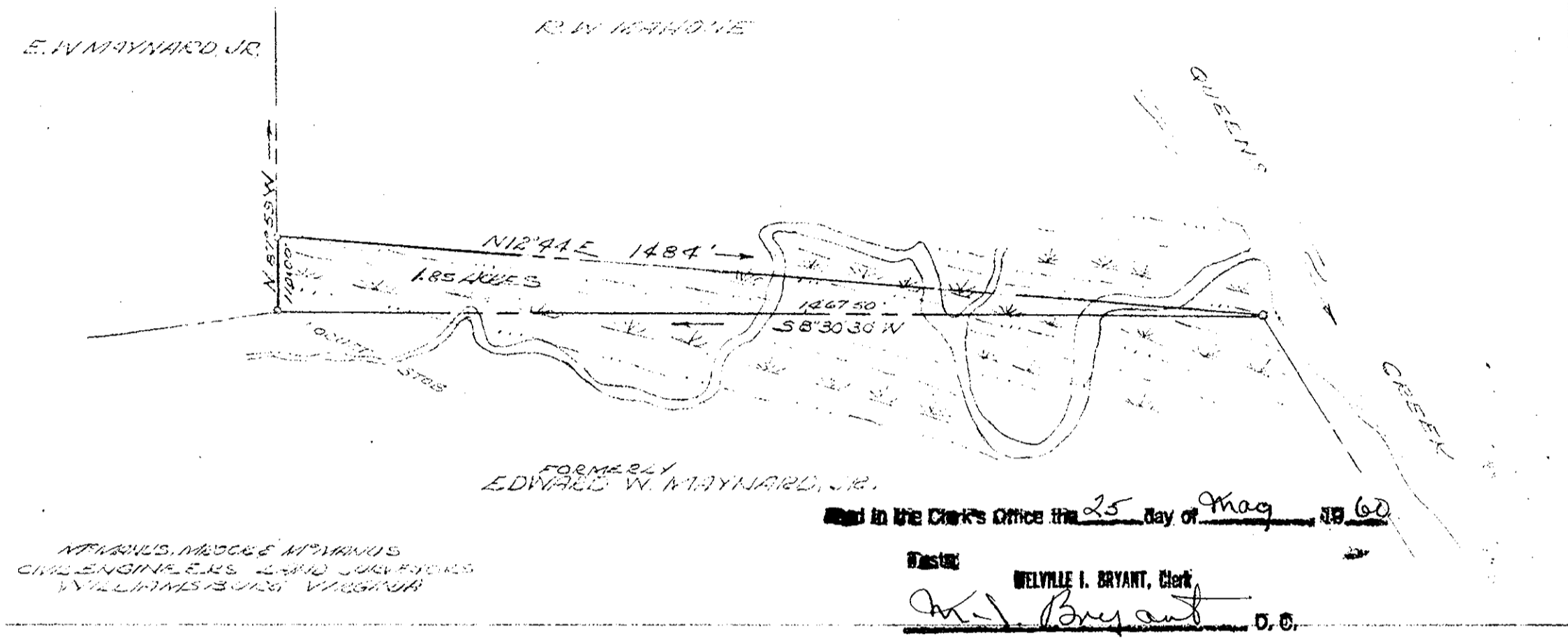
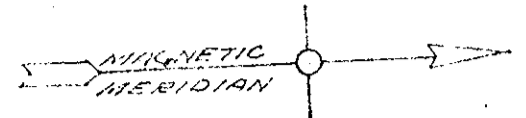


PART SHOWING SURVEY
OF A PARCEL OF LAND
STANDING IN THE NAME OF
EDWARD W. MAYNARD, JR.
BRITON DISTRICT
YORK COUNTY
VIRGINIA
SCALE 1"=200' DEC. 1959

Plat Book No. 6 Page 96



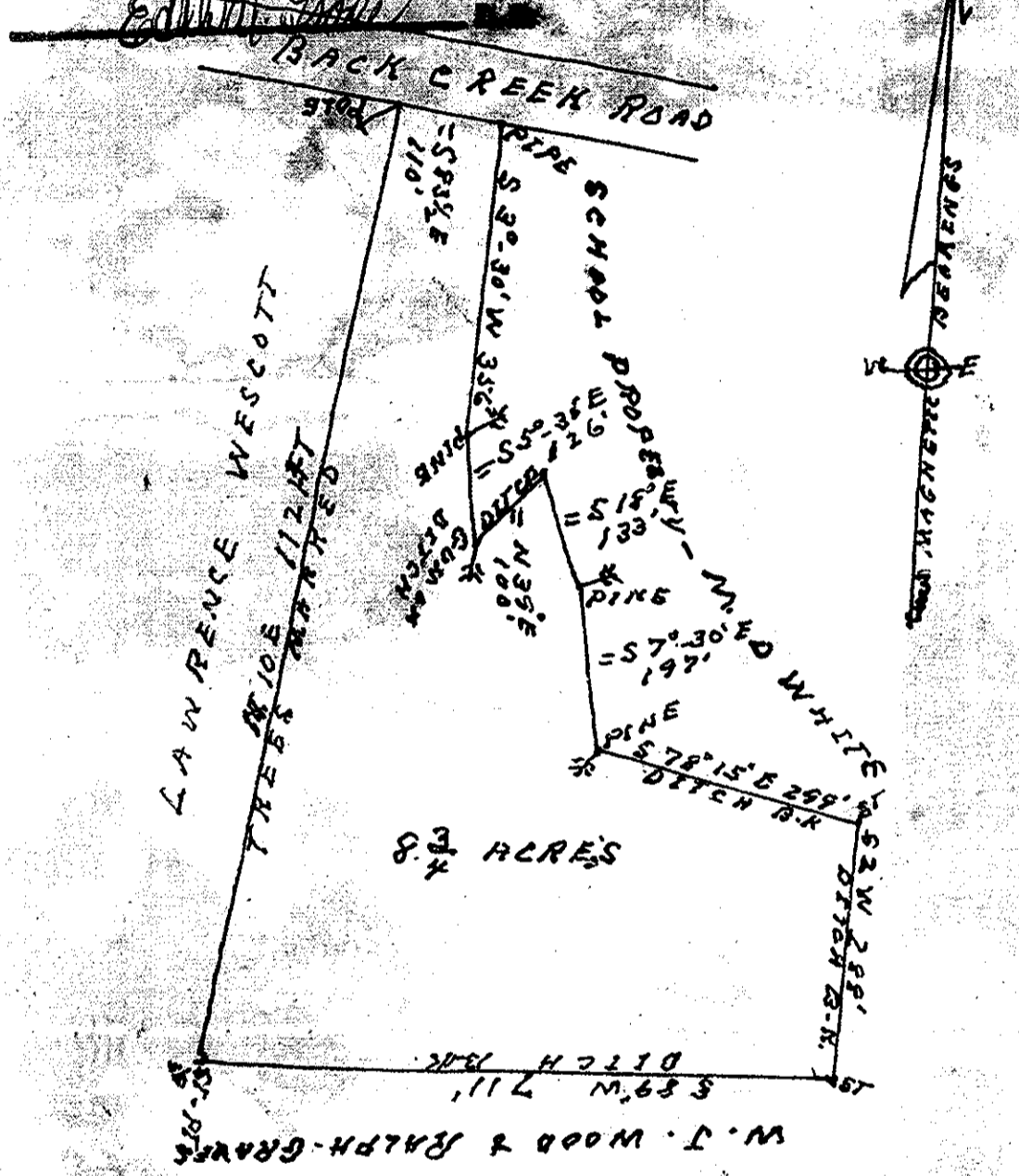
WILLIAMS, WESCOE & WILLIAMS
CIVIL ENGINEERS - LAND SURVEYORS
WILLIAMSBURG, VIRGINIA

Filed in the Clerk's Office the 25 day of May 1960

Teste:
MELVILLE I. BRYANT, Clerk
M.I. Bryant D.O.

Filed in the Clerk's Office the 27 day of July 1960

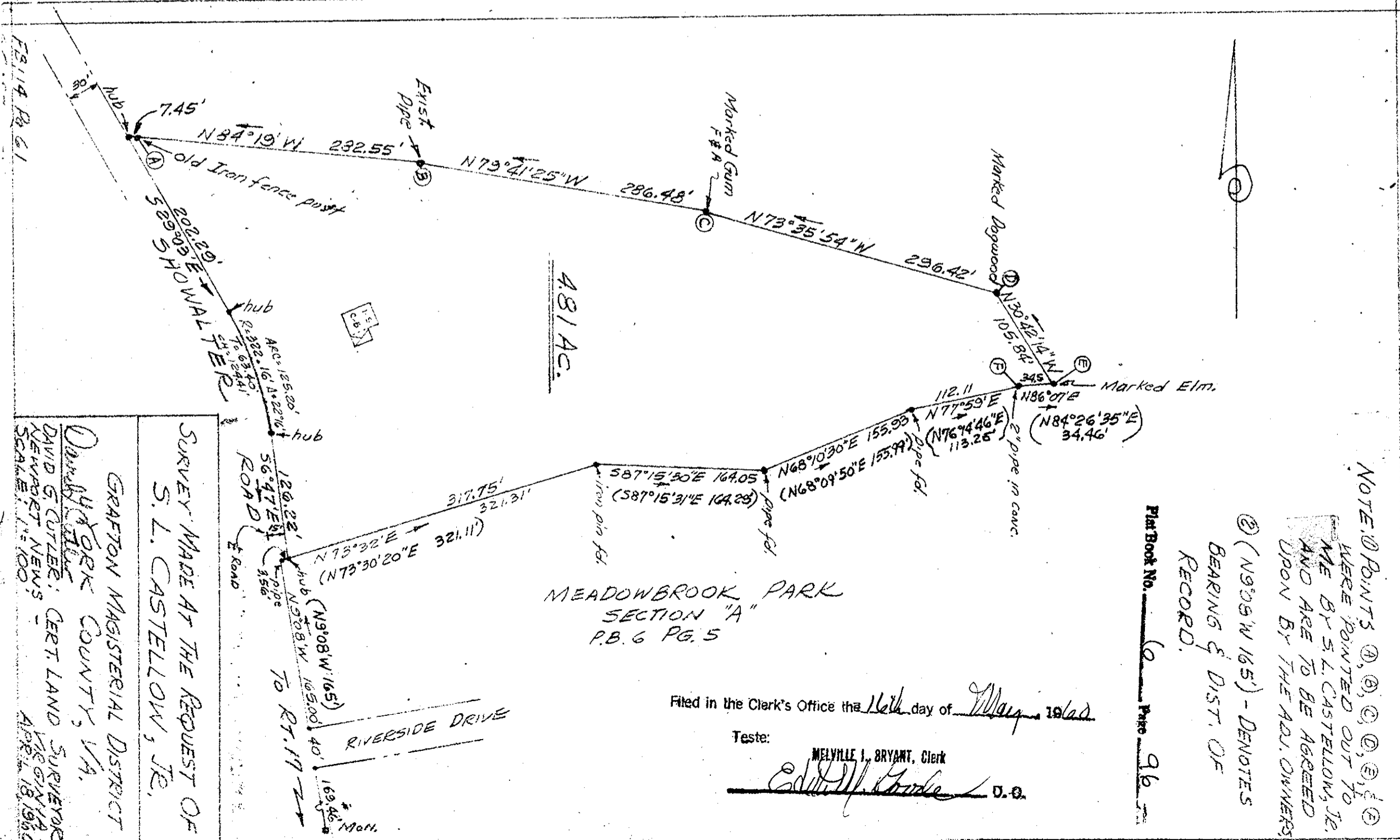
Teste:
MELVILLE I. BRYANT, Clerk
Edith W. ...



PLAT OF 8 3/4 ACRES OF LAND
ON BACK CREEK ROAD IN SEAFORD
YORK COUNTY VIRGINIA
SURVEYED FOR A.C. WILLIAMS.

March 26th 1960
Scale 1" = 200'

R. P. Heywood
Certified Surveyor



SURVEY MADE AT THE REQUEST OF
S. L. CASTELLOW, JR.
GRAFTON MAGISTERIAL DISTRICT
YORK COUNTY, VA.
DAVID G. CUTLER, CERT. LAND SURVEYOR
NEWPORT NEWS
SCALE 1"=100'

Filed in the Clerk's Office the 11th day of May 1960

Teste:
MELVILLE I. BRYANT, Clerk
Edith W. ... D.O.

NOTE: POINTS (1), (2), (3), (4), (5), (6) WERE POINTED OUT TO ME BY S. L. CASTELLOW, JR. AND ARE TO BE AGREED UPON BY THE ADJ. OWNERS.
(7) (N90°5'W 165') - DENOTES BEARING & DIST. OF RECORD.
Plat Book No. 6 Page 96