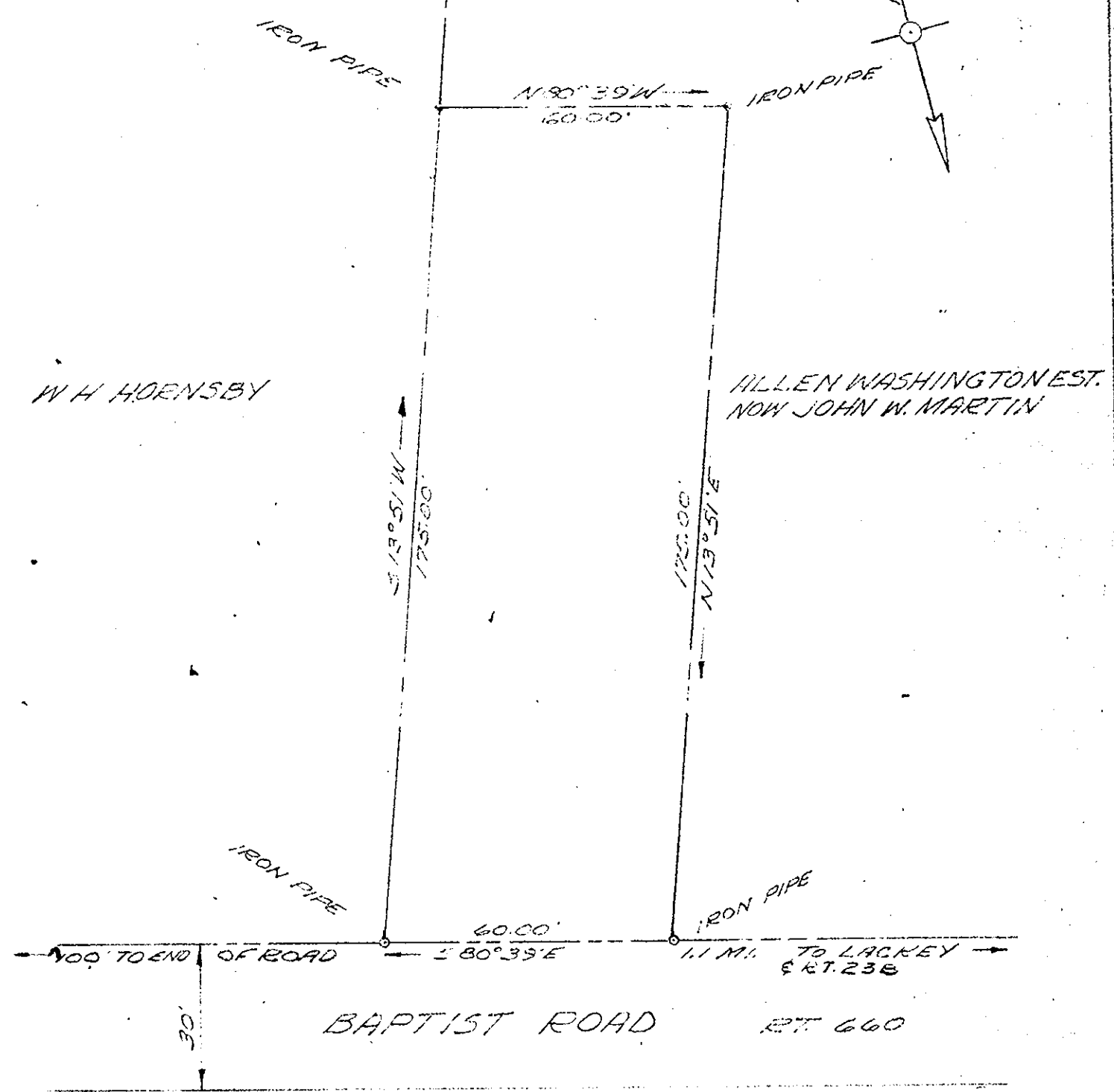
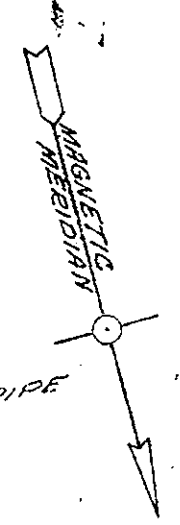


Filed in the Clerk's Office the 10th day of February, 1961

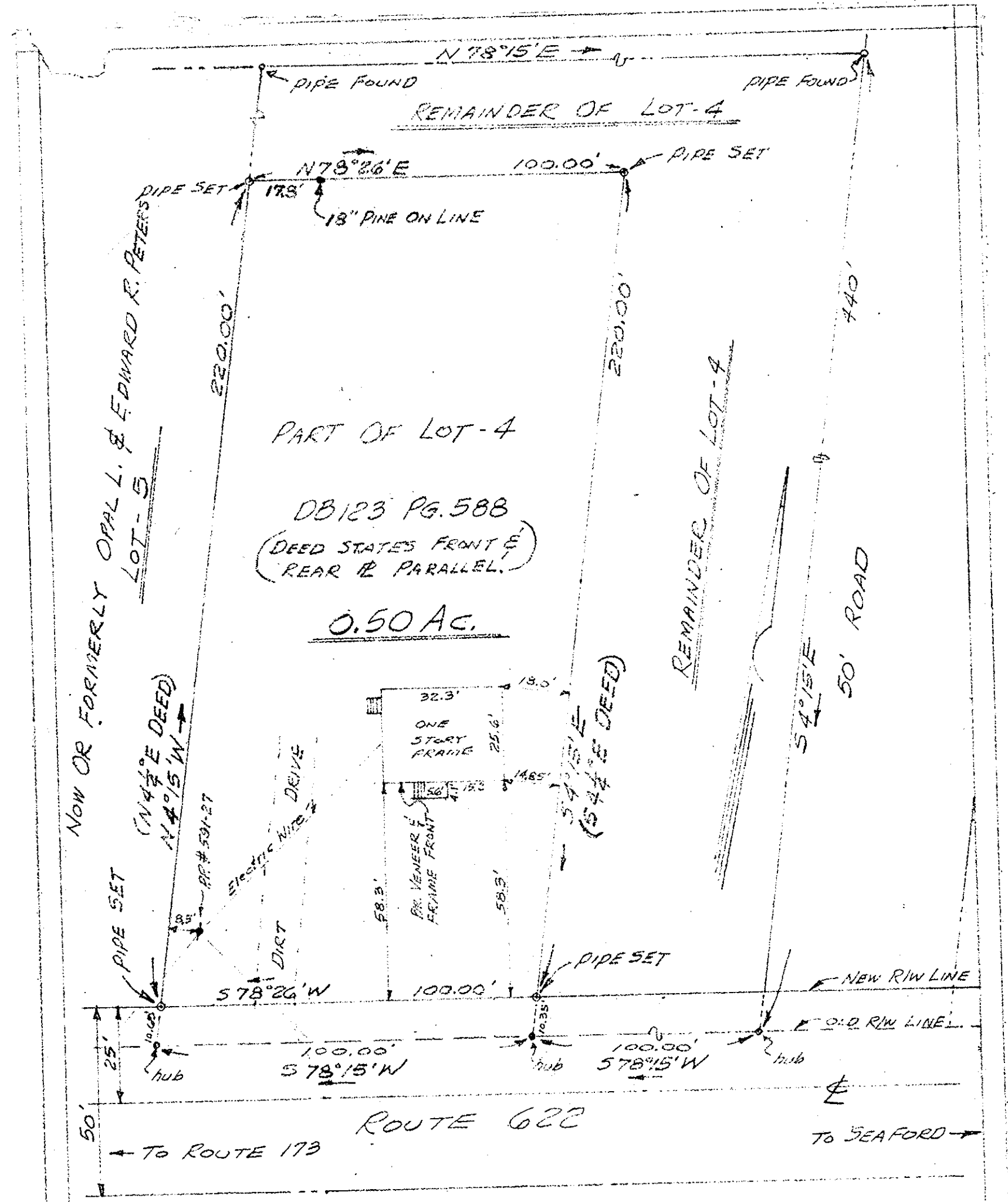
Teste: MELVILLE L. BRYANT, Clerk  
*Edith M. Wade* D.C.



Plat Book No. 6 Page 117

PLAT SHOWING SURVEY OF A PARCEL OF LAND STANDING IN THE NAME OF LILLIAN HARROD NELSON DISTRICT YORK COUNTY, VIRGINIA. SCALE 1"=30' JAN. 19, 1960

McMANUS, MROCK & McMANUS CIVIL ENGINEERS - LAND SURVEYORS WILLIAMSBURG, VIRGINIA. Bernard V. Mrook



Plat Book No. 6 Page 117

NOTE: FOR SUBDIVISION PLAT MADE FOR THEODORE TREXLER SEE PLAT BOOK #5 PAGE 104.

PLAT OF THE PROPERTY OF WILLIAM S. & JANICE H. BYRUM PART OF LOT-4 SECTION "A" THEODORE TREXLER YORK COUNTY, VA. DAVID G. CUTLER CERT. LAND SURVEYOR NEWPORT NEWS, VIRGINIA SCALE: 1"=30' FEB. 8, 1960

Filed in the Clerk's Office the 9th day of March, 1961

Teste: MELVILLE L. BRYANT, Clerk  
*Edith M. Wade* D.C.

FB#116 PG. 49