

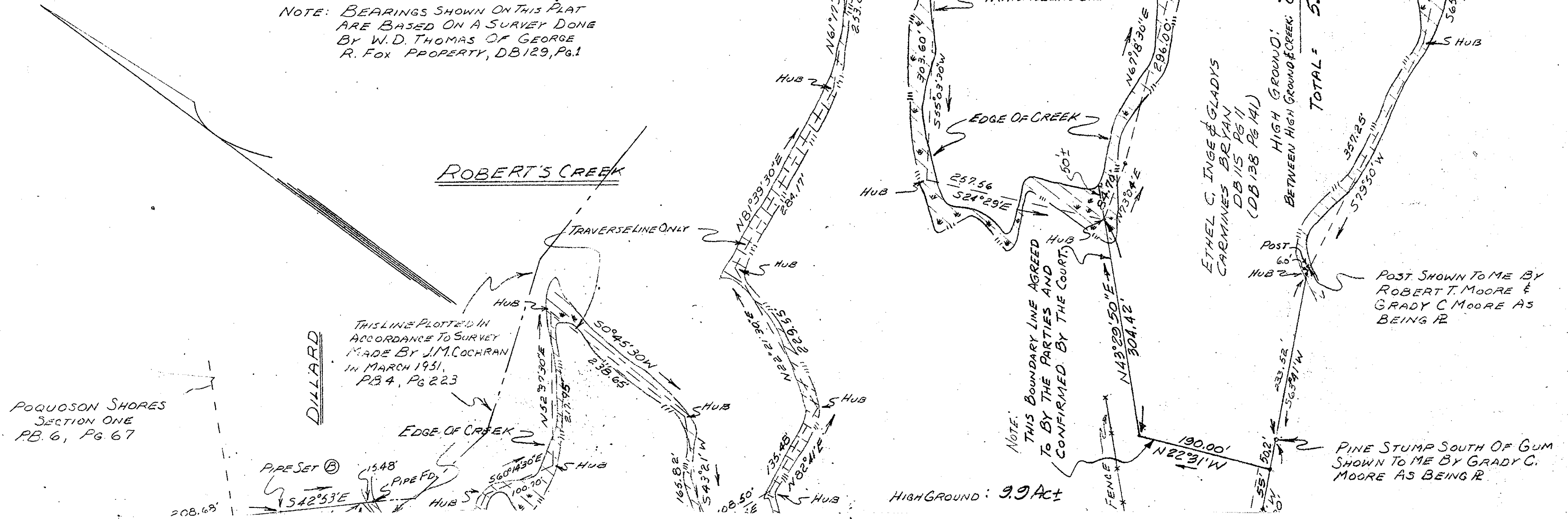
See Chancery Order Book No. 11, Page 252

Plat Book No. 6 Page 200

NOTE: BEARINGS SHOWN ON THIS PLAT ARE BASED ON A SURVEY DONE BY W.D. THOMAS OF GEORGE R. FOX PROPERTY, DB 129, Pg. 1

ROBERT'S CREEK

ROBERT'S CREEK



DILLARD

THIS LINE PLOTTED IN ACCORDANCE TO SURVEY MADE BY J.M. COCHRAN IN MARCH 1951, P.B. 4, PG. 223

POQUOSON SHORES SECTION ONE P.B. 6, PG. 67

PIPE SET (D) 15.48'

PIPE F.D. 100.00'

NOTE: THIS BOUNDARY LINE AGREED TO BY THE PARTIES AND CONFIRMED BY THE COURT.

HIGH GROUND: 9.9 AC ±

ETHEL C. INGE & GLADYS CARMINES BRYAN DB 115 PG 11 (DB 138 PG 141)

HIGH GROUND: 5.0 AC ± BETWEEN HIGH GROUND & CREEK: 0.8 AC ±

TOTAL: 5.8 AC ±

POST SHOWN TO ME BY ROBERT T. MOORE & GRADY C. MOORE AS BEING R

PINE STUMP SOUTH OF GUM SHOWN TO ME BY GRADY C. MOORE AS BEING R