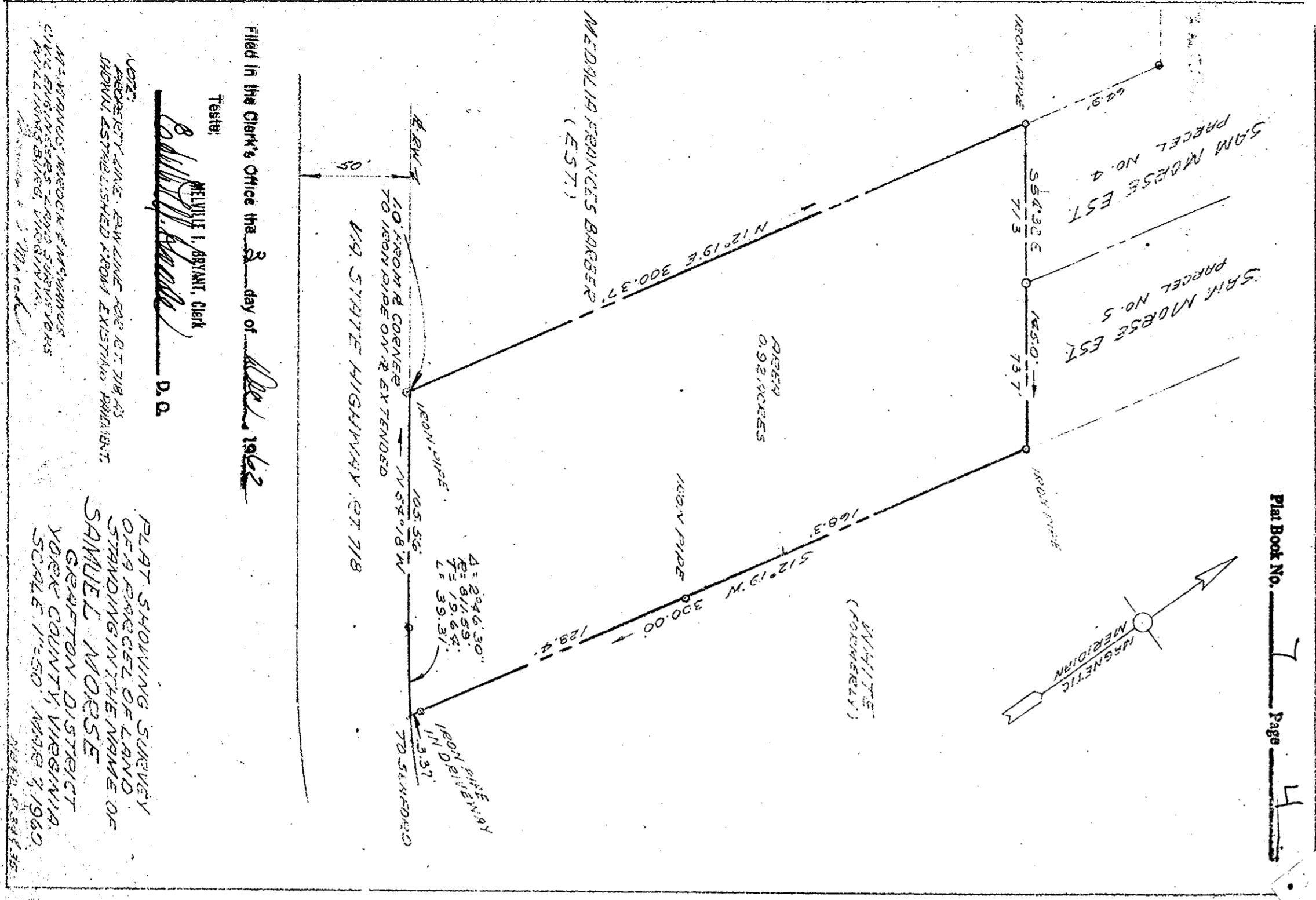


Filed in the Clerk's Office the 28 day of Dec, 1962

Teste: MELVILLE I. BRYANT, Clerk
M. I. Bryant D. O.

DB 153 Page 800

PLAT SHOWING EASEMENT OF RIGHT-OF-WAY ACROSS THE PROPERTY OF THE AUCHTER COMPANY BRUTON DISTRICT YORK COUNTY VIRGINIA SCALE: 1"=100' DEC. 21, 1962
 MAMMUS MROCK & MAMMUS CIVIL ENGINEER - LAND SURVEYORS WILLIAMSBURG, VIRGINIA
Mammus Mroch



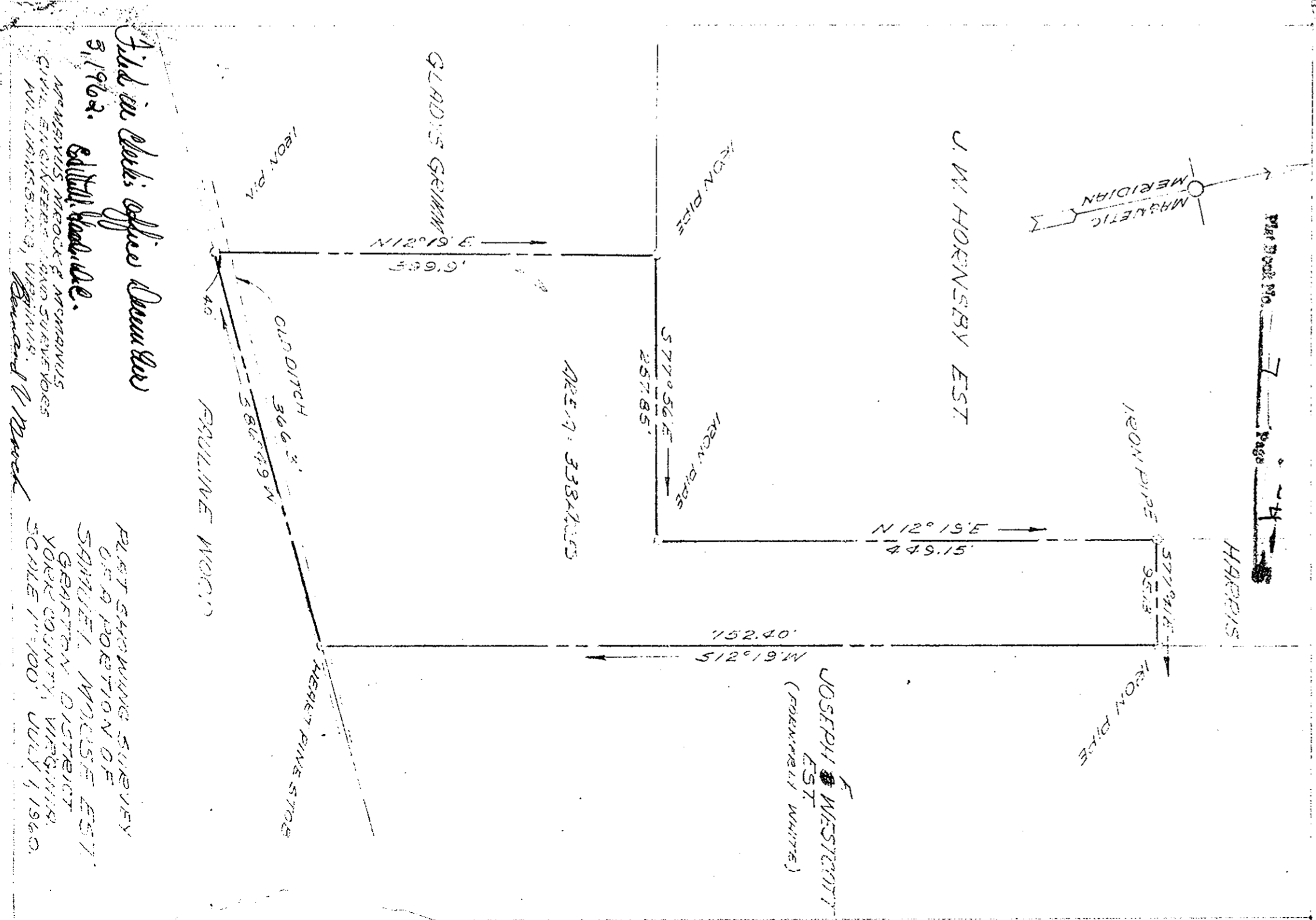
Plat Book No. 7 Page 4

Filed in the Clerk's Office the 1 day of Dec, 1962

Teste: MELVILLE I. BRYANT, Clerk
M. I. Bryant D. O.

MAMMUS MROCK & MAMMUS CIVIL ENGINEER - LAND SURVEYORS WILLIAMSBURG, VIRGINIA
Mammus Mroch

PLAT SHOWING SURVEY OF A PARCEL OF LAND STANDING IN THE NAME OF SAMUEL MOSESE GRAFTON DISTRICT YORK COUNTY VIRGINIA SCALE 1"=250' MADE JULY 1, 1962
Samuel Mosese



Plat Book No. 7 Page 4

Filed in Clerk's Office Dec 1, 1962

Teste: MELVILLE I. BRYANT, Clerk
M. I. Bryant D. O.

MAMMUS MROCK & MAMMUS CIVIL ENGINEER - LAND SURVEYORS WILLIAMSBURG, VIRGINIA
Mammus Mroch

PLAT SHOWING SURVEY OF A PORTION OF EST. SAMUEL MOSESE GRAFTON DISTRICT YORK COUNTY VIRGINIA SCALE 1"=100' JULY 1, 1962
Samuel Mosese