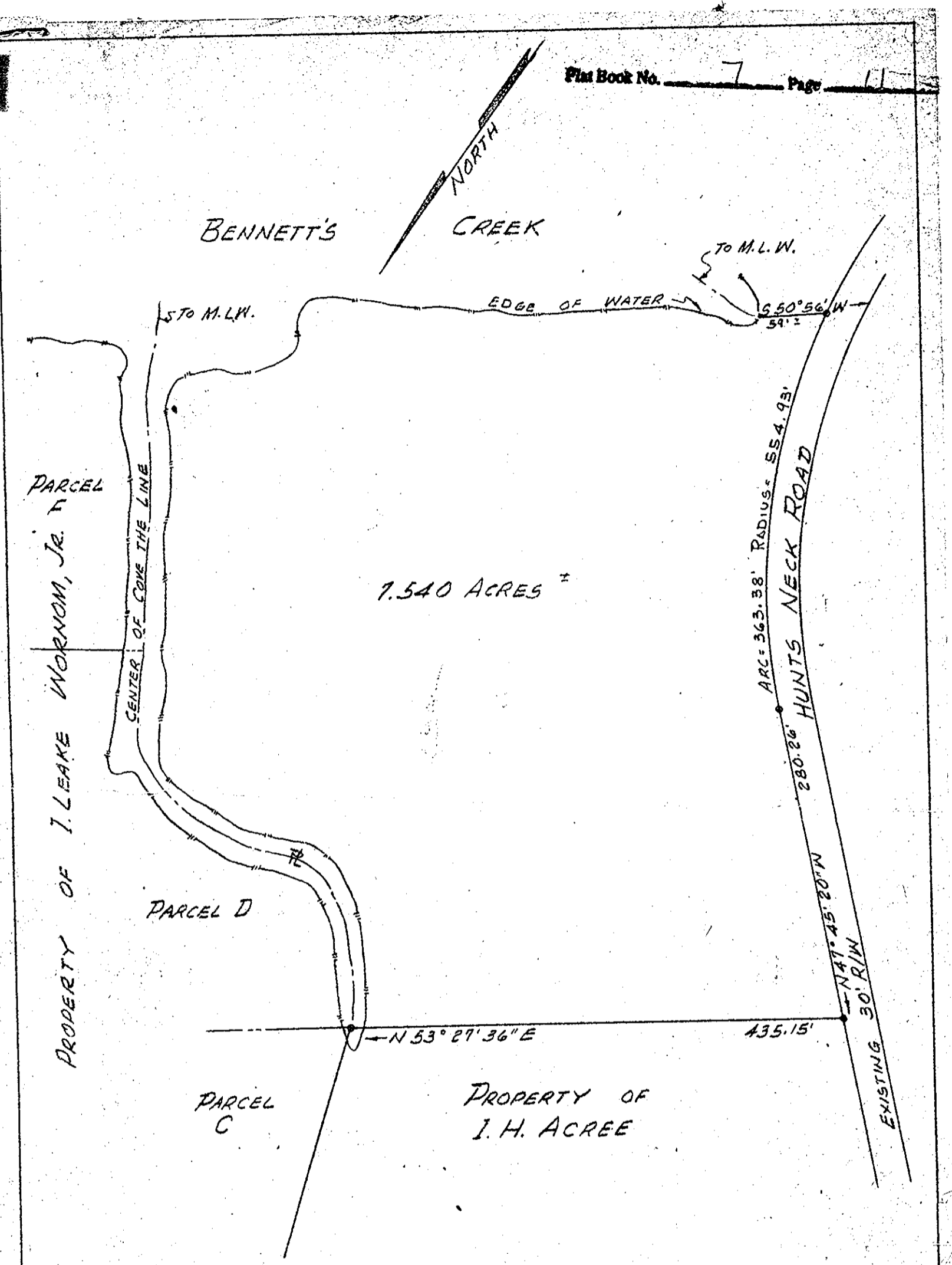


2-4-63



Filed in the Clerk's Office the 12th day of Dec. 1962

Teste: MELVILLE I. BRYANT, Clerk

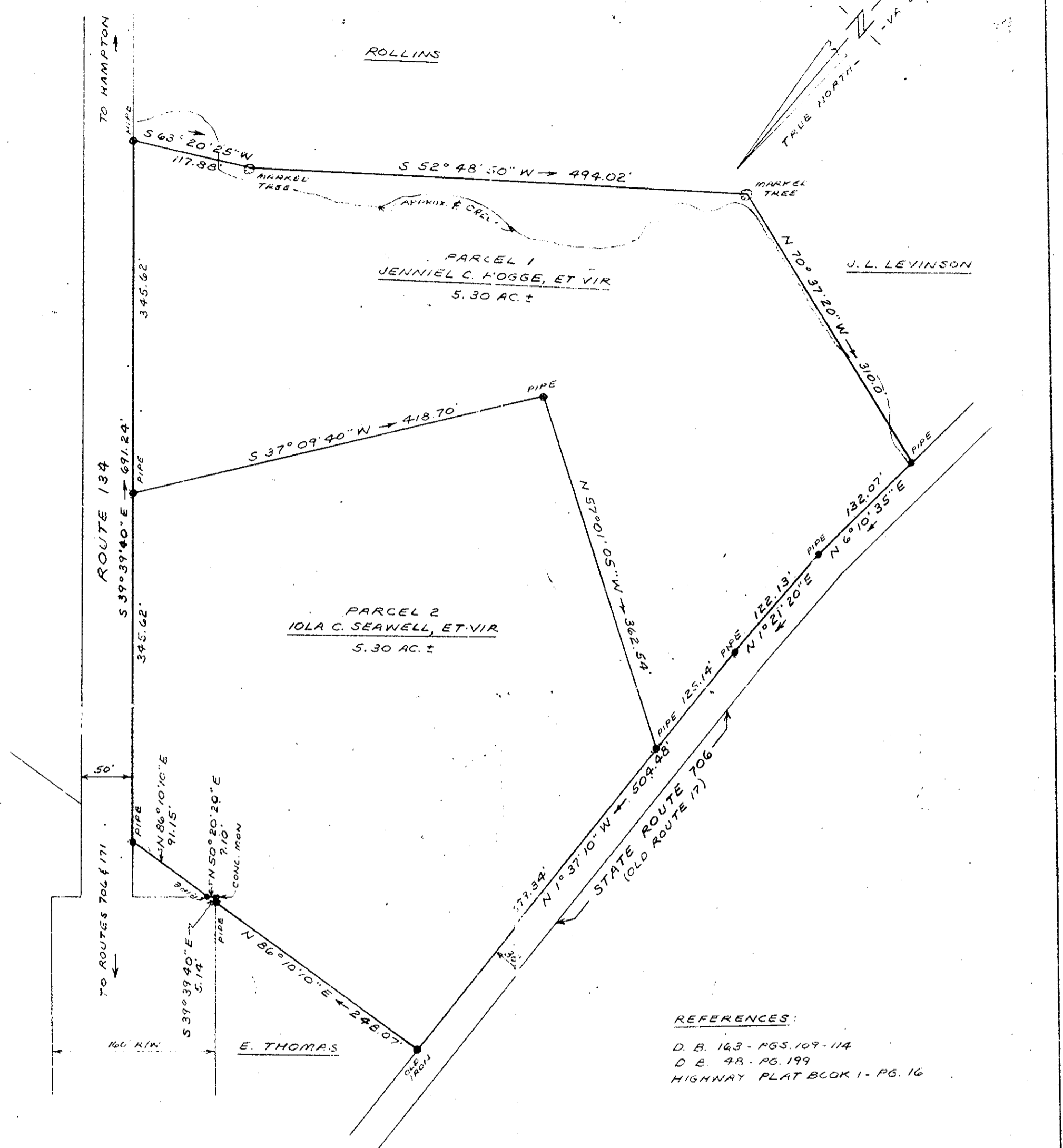
Melville I. Bryant

PLAT OF THE PROPERTY OF I. LEAKE WORNOM, JR.
7.540 ACRES ±

YORK COUNTY, VIRGINIA

R. F. Dyle
R. F. DYLE: Certified Land Surveyor
Newport News, Va.
Scale: 1"=100' October 10, 1960

FB. 296, Pg. 24, 54-56



REFERENCES:
D. B. 163 - PGS. 109-114
D. B. 48 - PG. 199
HIGHWAY PLAT BOOK 1 - PG. 16

Filed in the Clerk's Office the 7th day of Feb. 1963

Teste: MELVILLE I. BRYANT, Clerk

Melville I. Bryant

PLAT
SHOWING PROPERTIES OF
JENNIEL C. HOGGE, ET VIR
AND
IOLA C. SEAWELL, ET VIR

BEING LOCATED IN BETHEL DISTRICT
YORK COUNTY, VIRGINIA

SCALE: 1"=100' JANUARY 28, 1963

S. J. GLASS & ASSOCIATES
ENGINEERING SERVICES - HAMPTON, VIRGINIA

P. F. NO. FIELD WORK BY:

Particulars
and
rounds.