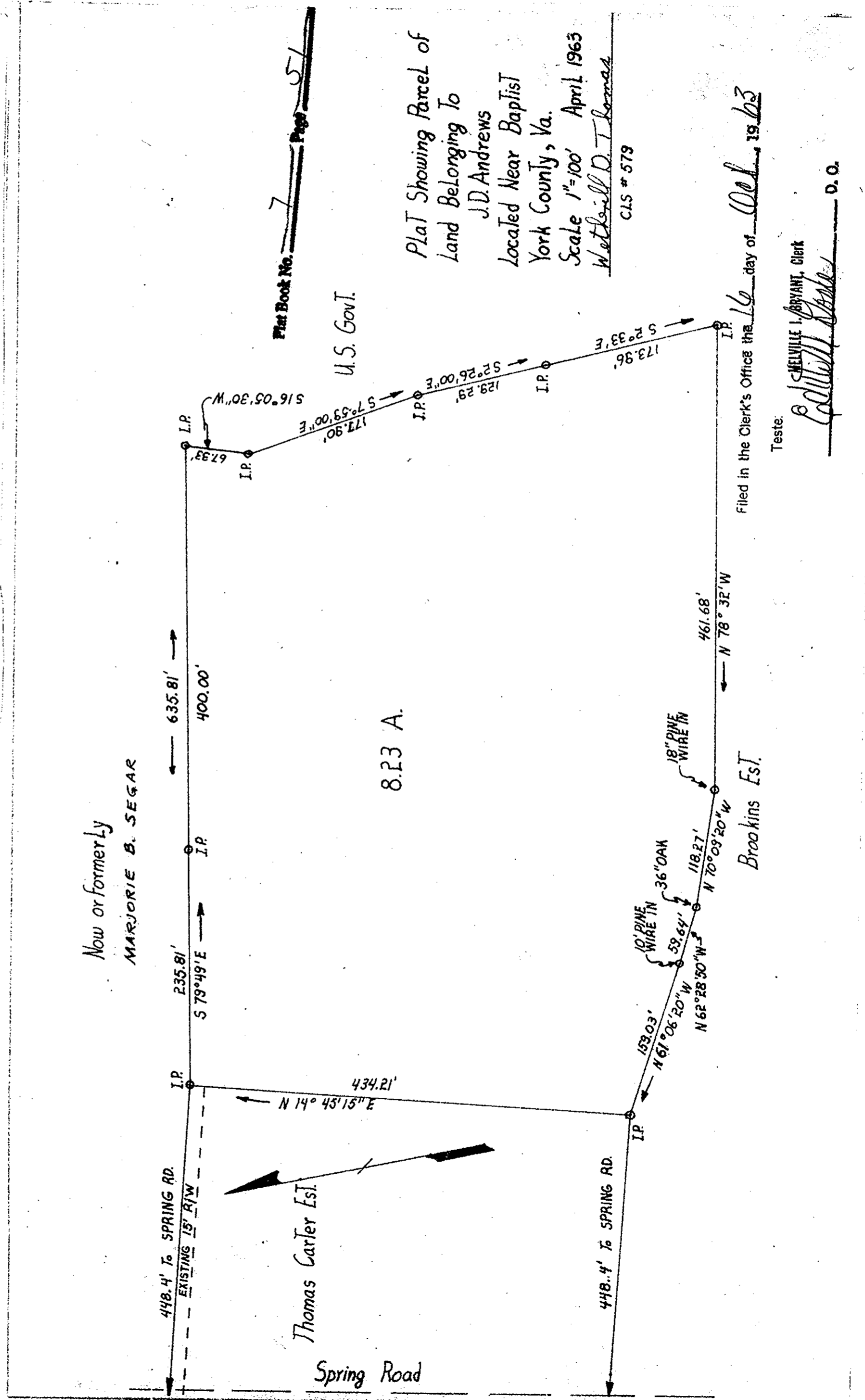


Filed in the Clerk's Office the 3 day of Oct. 1963 Plat Book No. 7 Page 51

Teste: Melville I. Bryant, Clerk D. O.

A PARCEL OF LAND STANDING IN THE NAME OF QUEEN'S LAKE DEVELOPMENT CO., INC. TO BE DEDICATED AS A PUBLIC THOROUGHFARE BRUTON DISTRICT YORK COUNTY, VIRGINIA SCALE: 1"=100' AUGUST 13, 1962

M. MARCUS MEDICK & M. MARCUS CIVIL ENGINEER - LAND SURVEYOR WILLIAMSBURG, VIRGINIA



Plat Book No. 7 Page 51

U.S. Govt.

Plat Showing Parcel of Land Belonging to J.D. Andrews Located Near Baptist York County, Va. Scale 1"=100' April 1963 Metcalf D. Thomas CLS # 579

Filed in the Clerk's Office the 16 day of Oct. 1963

Teste: Melville I. Bryant, Clerk D. O.