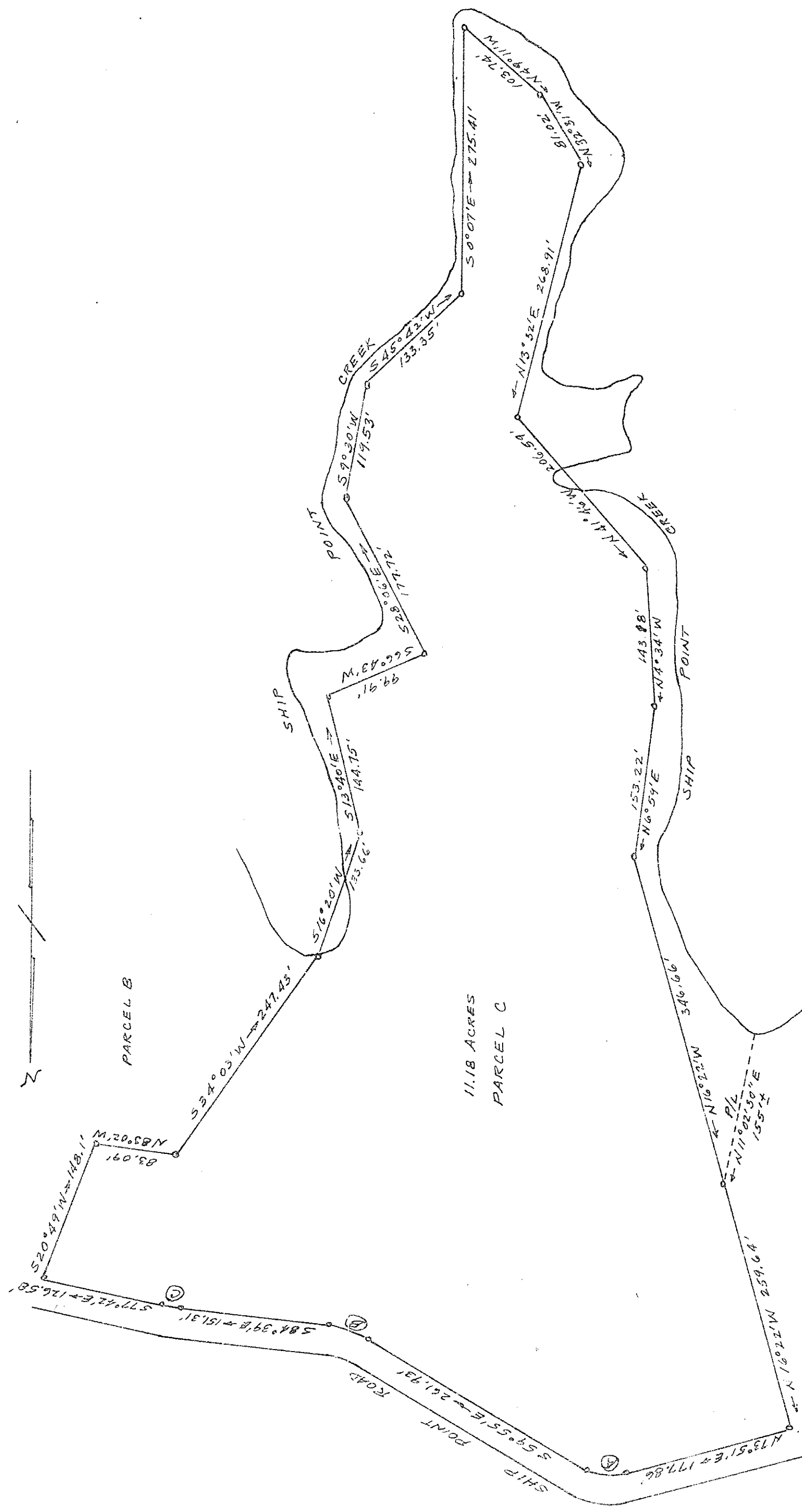


PORTION OF PROPERTY OF  
G. D. COLE SITUATED ON  
SHIP POINT ROAD, YORK COUNTY, VA.  
AUGUST, 1963 SCALE 1/2"=100'

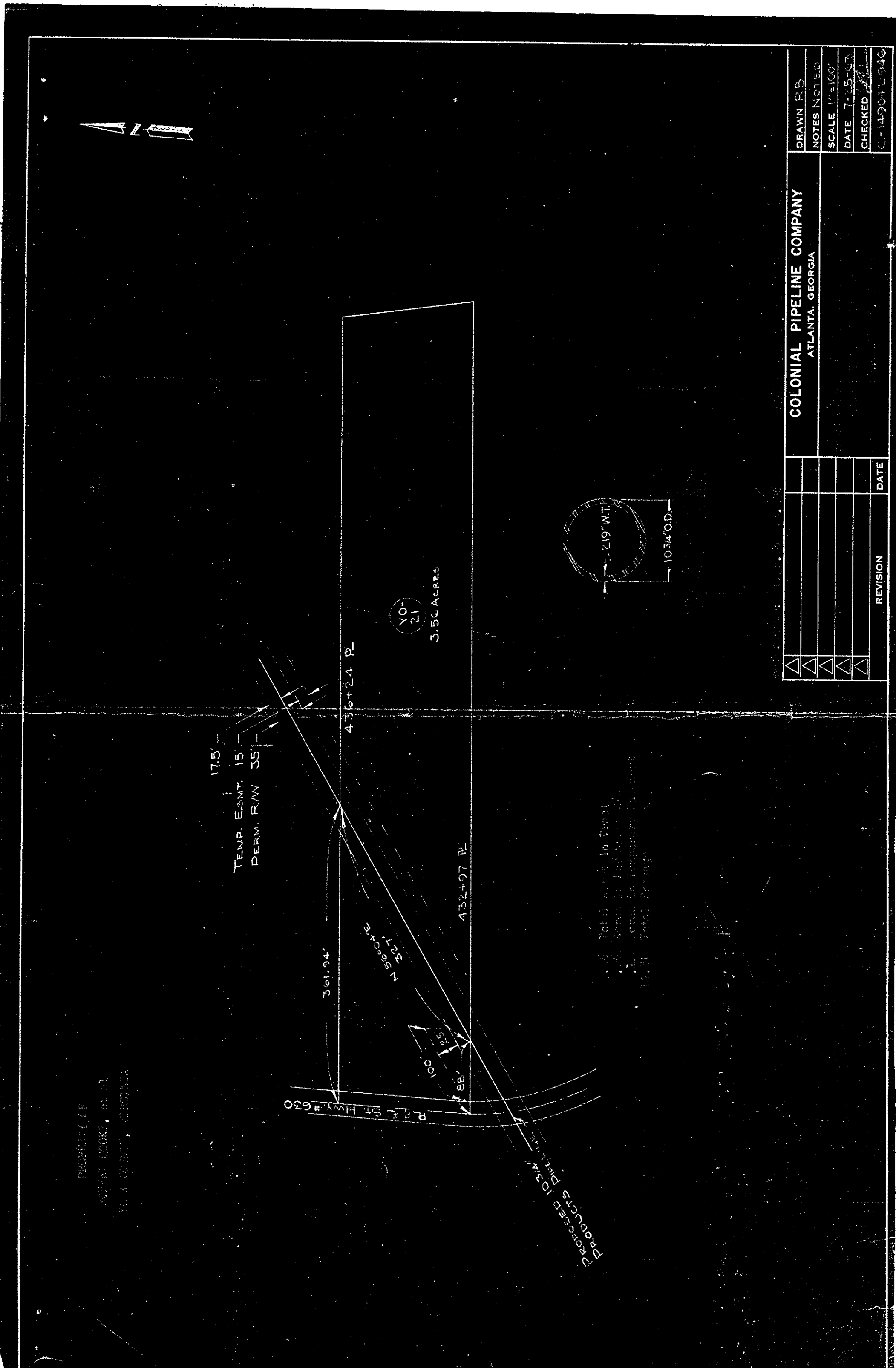
Wetherill D. Thomas  
WETHERILL D. THOMAS, C.L.S., B.T.Y.

Plat Book No. 7 Page 65



CURVE DATA

	A	B	C
Δ	46°14'	24°04'	6°57'
TAN	21.544'	21.73'	6.97'
RAD	50'	100'	130'
ARC	40.345'	43.17'	12.13'



REVISION	DATE

DRAWN	R.B.
NOTES NOTED	
SCALE	1"=100'
DATE	7-25-67
CHECKED	

COLONIAL PIPELINE COMPANY  
ATLANTA, GEORGIA