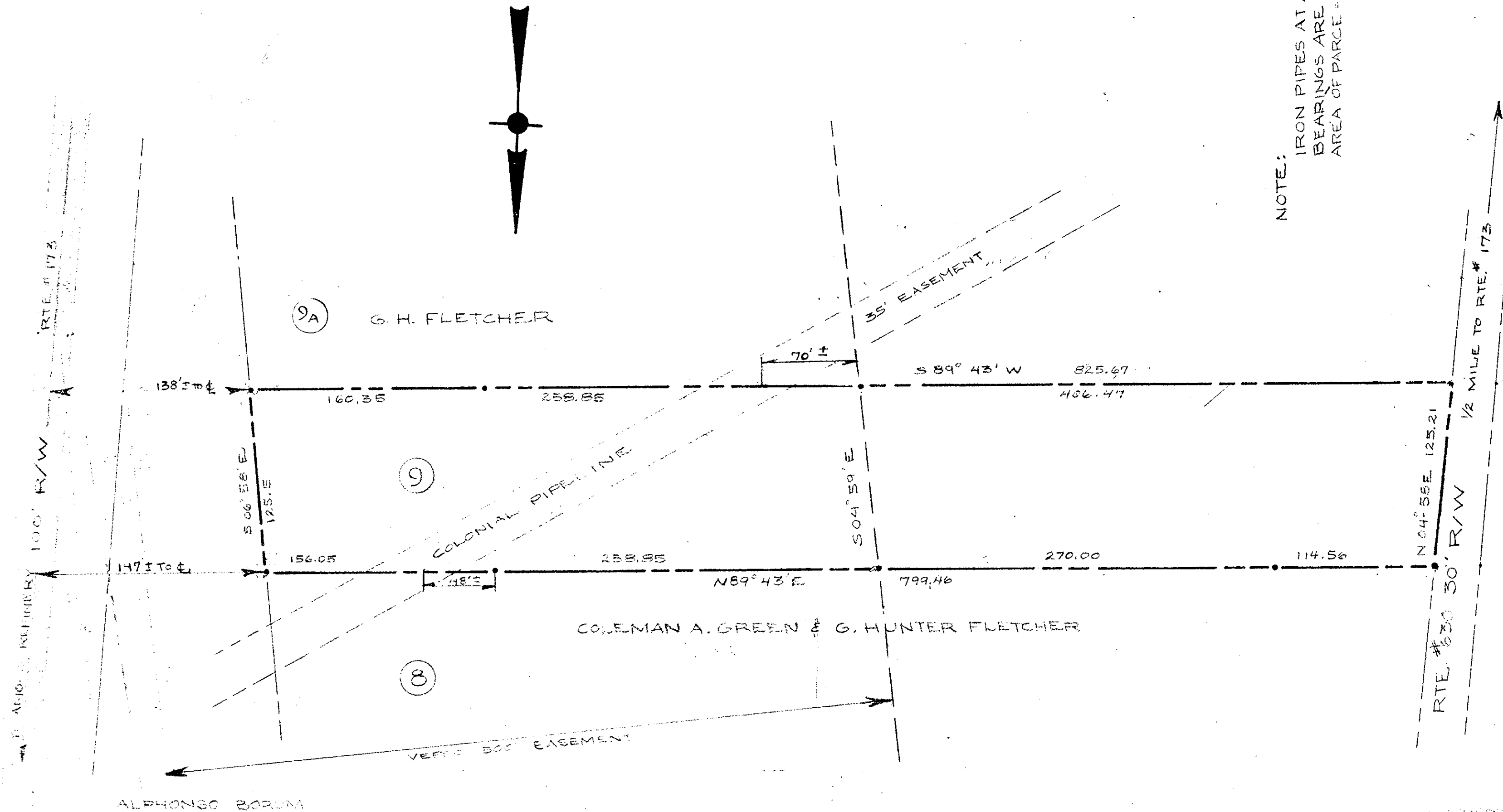


Deed Book 182, Page 536



NOTE:
 IRON PIPES AT ALL CORNERS.
 BEARINGS ARE CLOCKWISE.
 AREA OF PARCELS = 2.326 ACRES

Plat Book No. 1 Page 121

Plat of:
 Property of:
 MATTIE W. CUMTIS
 To be conveyed to
 JOHN TRUMBLE, JR.
 Scale 1" = 60'
 JAN. 1965
 CHARLTON HASKICKI, YORK COUNTY, VIRGINIA

Stephen Stephens
 STEPHEN STEPHENS
 SURVEYOR
 1600 FARM ROAD