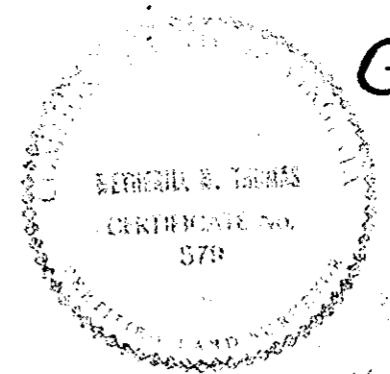
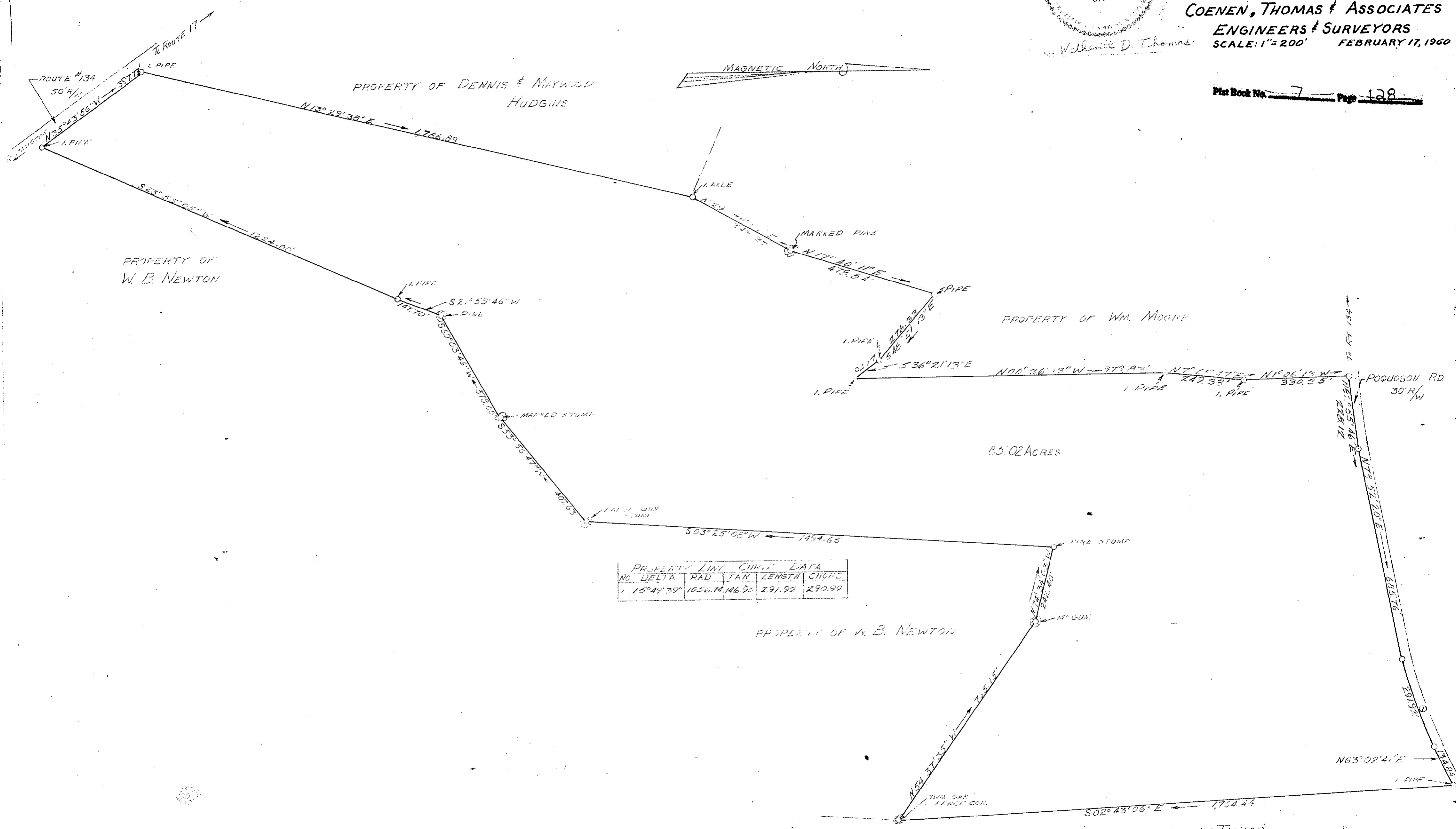


PLAT OF PROPERTY OF
 GEORGE L. SMITH ESTATE
 GRAFTON DISTRICT
 YORK COUNTY, VIRGINIA
 COENEN, THOMAS & ASSOCIATES
 ENGINEERS & SURVEYORS
 SCALE: 1"=200' FEBRUARY 17, 1960



William D. Thomas

Plat Book No. 7 Page 128



NO.	DELTA	RAD.	TAK	LENGTH	CHORD
1	15°49'39"	1056.74	146.90	291.92	290.99

Filed in the Clerk's Office the 5th day of March, 1960

Teste
 MELVILLE J. BRYANT, Clerk
Ed W. Hilde
 D.C.
 Plat Book 183, page 676
 February 17, 1960