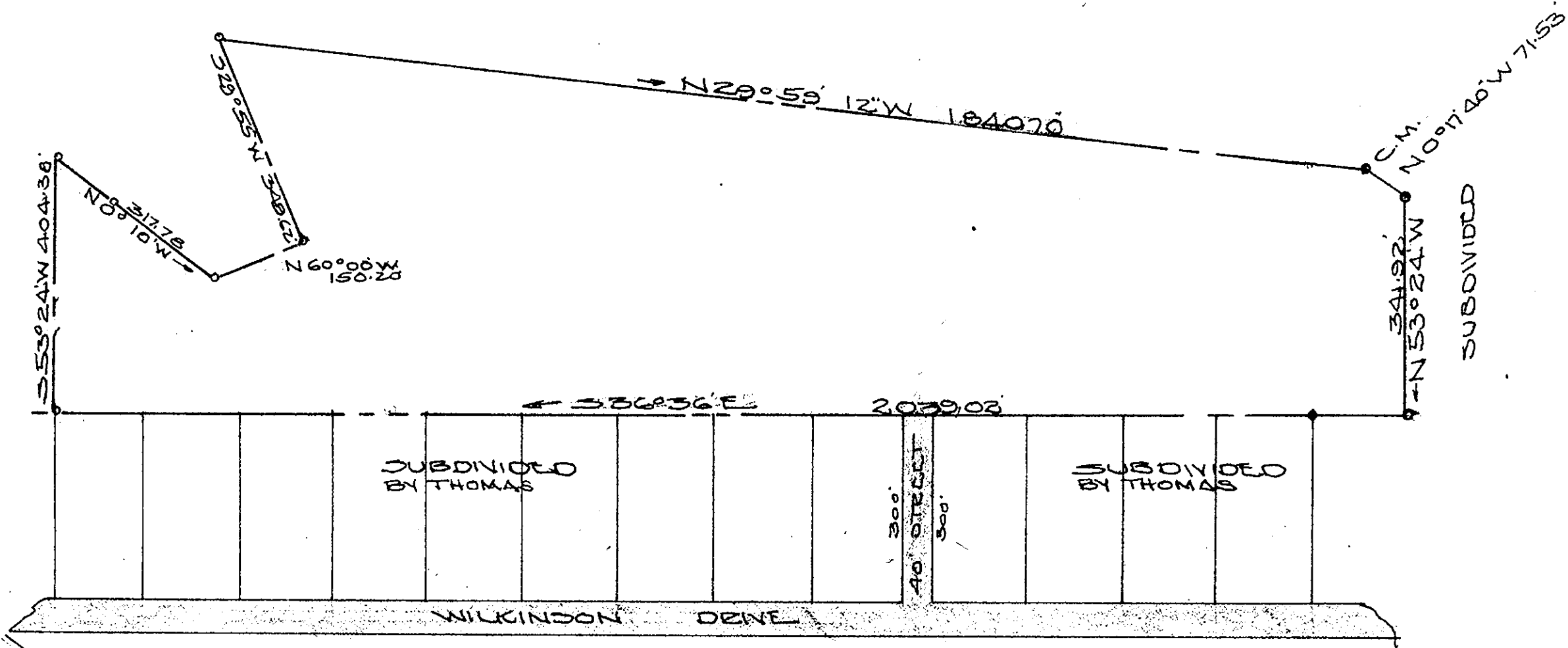


CITY OF WILLIAMSBURG
WALLER RESERVOIR

SUBDIVIDED

SUBDIVIDED



SUBDIVIDED
BY THOMAS

SUBDIVIDED
BY THOMAS

WILKINSON DRIVE

300'
40' STREET
300'

REGISTERED ENGINEER
LAND SURVEYOR 1911
HIGHWAY ENGINEER 1917
CIVIL ENGINEER 1939

Kenneth D. M. Williams, C. E.

Filed in the Clerk's Office the 2nd day of Dec. 1966

Teste.

MELVILLE K. CROWLEY, Clerk

Melville K. Crowley

D. O.

BRUTON DIST. YORK COUNTY VIRGINIA
PLAT SHOWING BOUNDARY SURVEY
OF REMAINING SECTION OF W. L.
SCHENCK ESTATE PROPERTY,
ADJOINING WALLER RESERVOIR
CITY LINE ACCEPTED AS MONUM-
-ENTED.

JULY 1, 1966

AREA 21.37 ACRES

SCALE 1" = 200'

IRON AND CONC. MON. MARKERS SHOWN @

ME THE M...