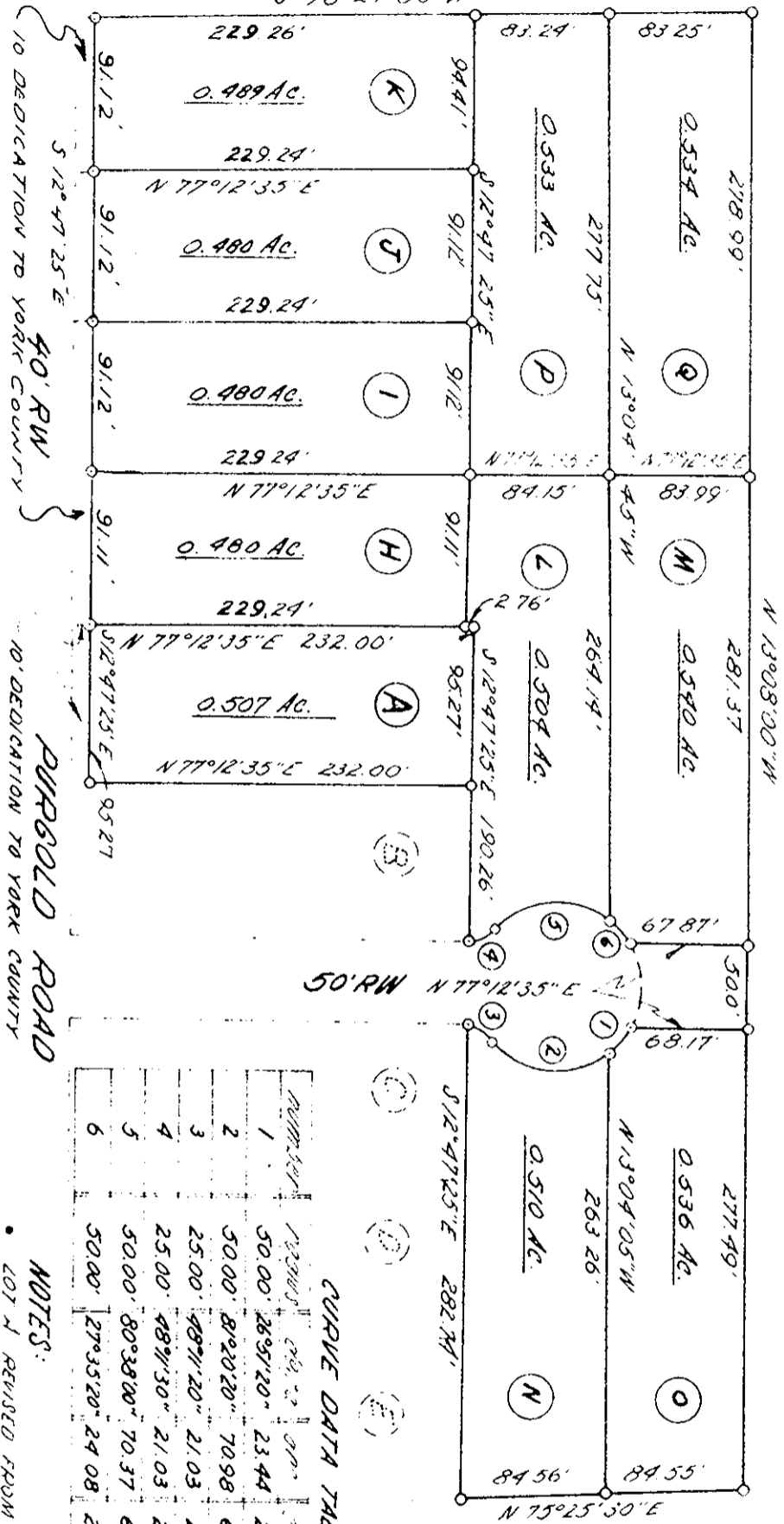


CLAYTON CREEK ROAD 30' RW
S 76°24'50" W



CURVE DATA TABLE

Number	Radius	Chord	Angle	Station	Station	Station	Station
1	50.00'	26.9720"	23.44°	23.22	11.94	530.37	20.00"
2	50.00'	81.2020"	70.98°	65.17	22.96	584.94	20.00"
3	25.00'	48.7120"	21.03°	20.42	11.81	178.42	20.00"
4	25.00'	48.7130"	21.03°	20.42	11.81	153.07	20.00"
5	50.00'	80.3800"	70.37°	64.70	42.43	169.98	40.00"
6	50.00'	27.3520"	24.08°	23.84	12.28	589.31	00.00"

NOTES:

- LOT 1 REVISED FROM PLAT BY CARL REYNOLDS C.E.S. SEPT. 18, 1964.
- IRON PIPE

Part of the Property of
LINWOOD GREY GOLENS, ET UX
Barton Highstone District,
York County, Virginia

NOTE: PLAT REVISED 8/3/67 TO SHOW 10' DEDICATION ON PURGOLD RD OF LOTS K, J, I, H.

Scale 1"=100'
Date 12566

APPROVED

YORK COUNTY BOARD OF SUPERVISORS
BY *William J. Herriot*
PLAT APPROVING AGENT.

DATE 8-18-67

VARIATIONS APPROVED
DATE _____

Filed in the Clerk's Office, Circuit Court, York Co., Va.
the 18th day of August 1967

Teste: **MELVILLE I. BRYANT, Clerk**

E. E. DRAINE,
Consulting Engineer
Newport News, Virginia