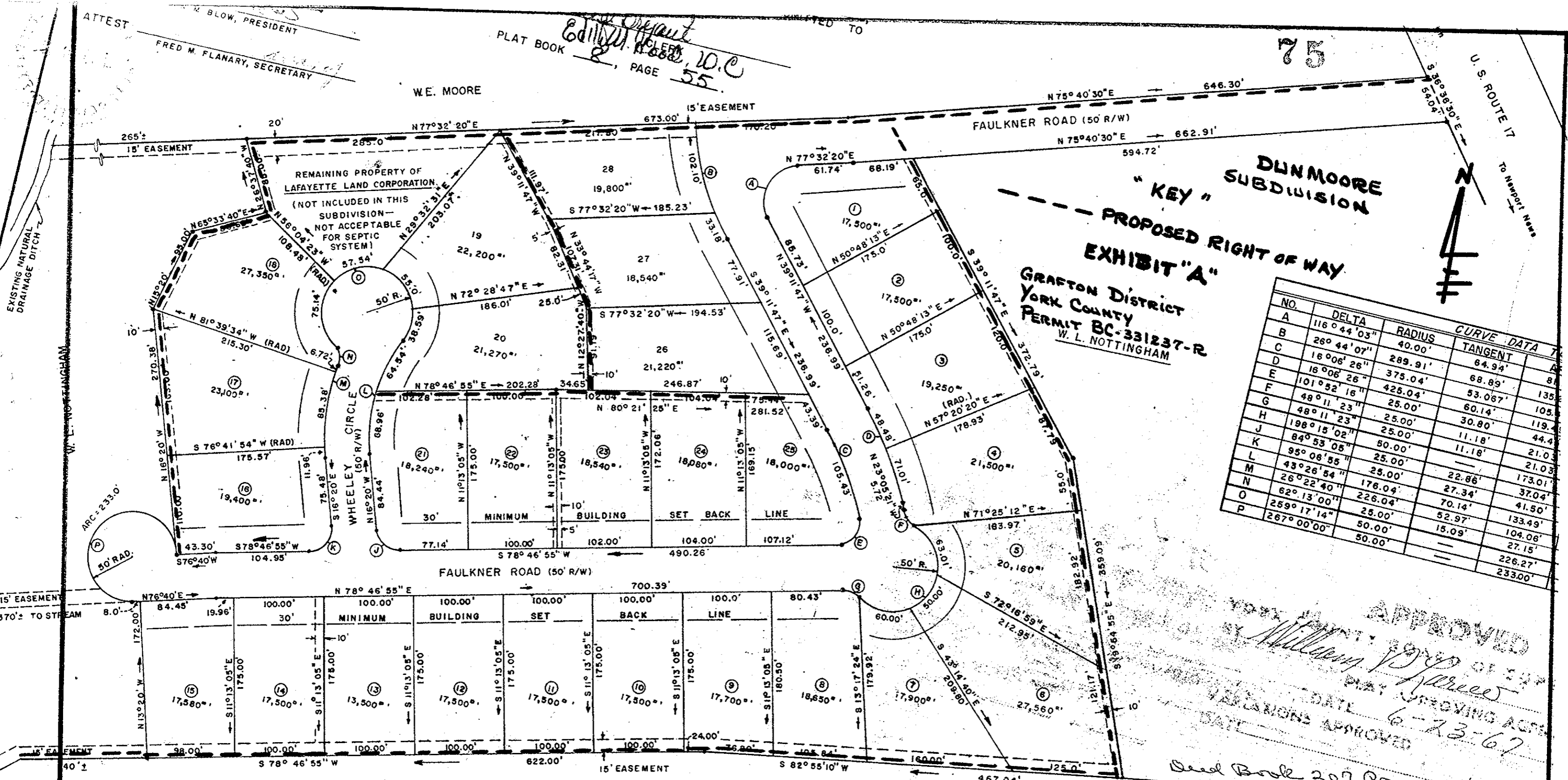


ATTEST  
 W. BLOW, PRESIDENT  
 FRED M. FLANARY, SECRETARY

PLAT BOOK *Edwin Moore*  
 PAGE 55

75

U.S. ROUTE 17  
 To Newport News



"KEY" SUBDIVISION  
 EXHIBIT "A"  
 PROPOSED RIGHT OF WAY

GRAFTON DISTRICT  
 YORK COUNTY  
 PERMIT BC-331237-R  
 W. L. NOTTINGHAM

NO.	DELTA	RADIUS	TANGENT	CURVE DATA
A	116° 44' 03"	40.00'	64.94'	81
B	26° 44' 07"	40.00'	68.89'	81
C	16° 06' 26"	289.91'	53.067'	135
D	16° 06' 26"	375.04'	60.14'	105
E	101° 52' 16"	425.04'	30.80'	119
F	48° 11' 23"	25.00'	11.18'	44.4
G	48° 11' 23"	25.00'	11.18'	21.03
H	198° 15' 02"	25.00'	—	21.03
J	84° 53' 05"	50.00'	—	—
K	95° 08' 55"	25.00'	22.86'	173.01'
L	43° 26' 54"	176.04'	27.34'	37.04'
M	26° 22' 40"	226.04'	70.14'	41.50'
N	62° 13' 00"	25.00'	52.97'	133.49'
O	259° 17' 14"	50.00'	15.09'	104.08'
P	267° 00' 00"	50.00'	—	27.15'
				226.27'
				233.00'

APPROVED  
 William J. Dep...  
 DATE 6-23-67  
 APPROVED

Deed Book 207, Page 114  
 Filed 11-1-67  
 Plat Book 8, Page 75

WRAY CURTIS ESTATE