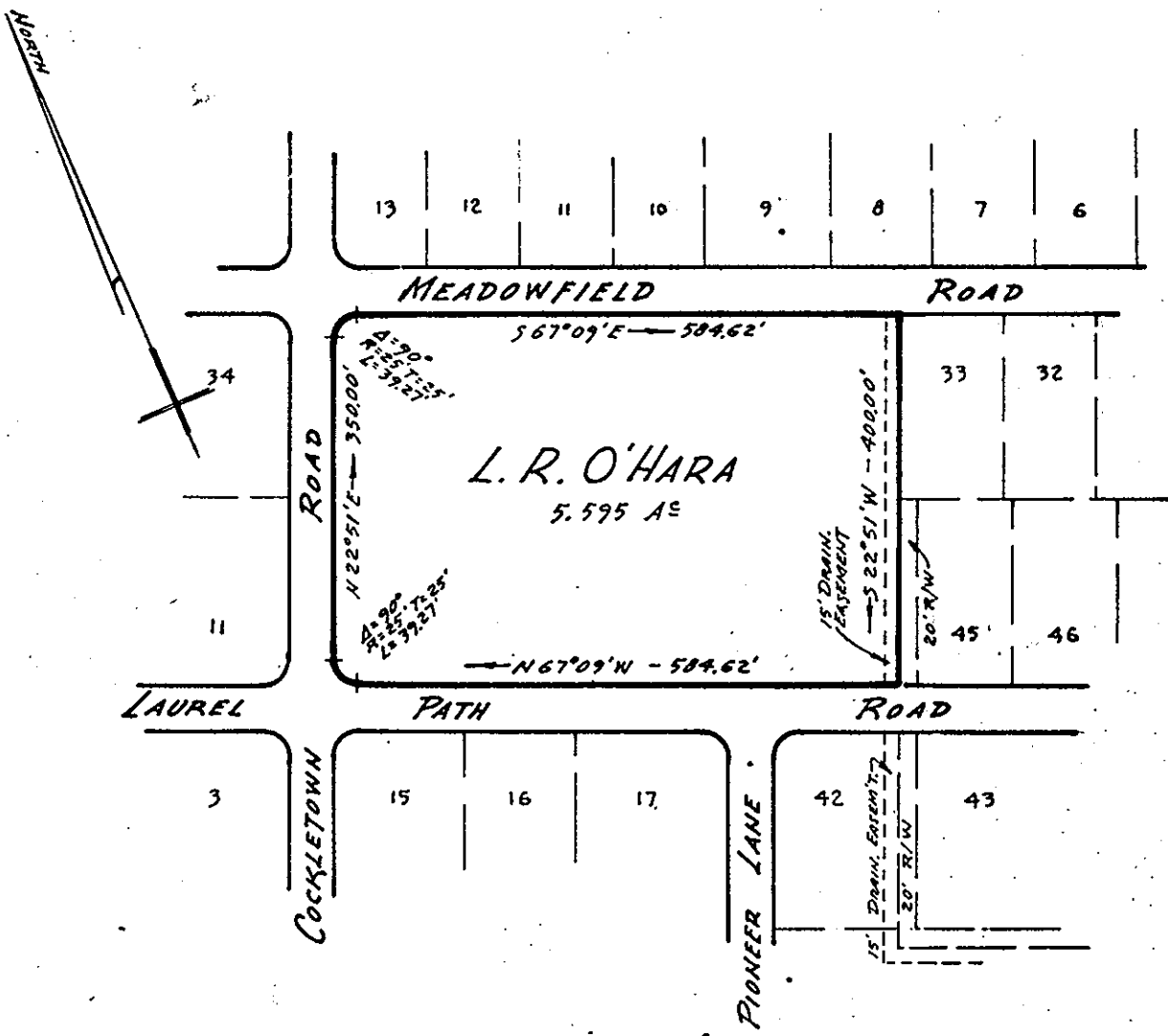


00



PARCEL OF LAND LYING ON EAST SIDE OF COCKLETOWN ROAD BETWEEN MEADOWFIELD AND LAUREL PATH ROADS.  
 GRAFTON DISTRICT  
 EDGEHILL SUBDIVISION

YORK Co.,

VA.

Filed in the Clerk's Office, Circuit Court, York Co., Va.  
 the 17th day of Nov 1967

Teste:

MELVILLE I. BRYANT, Clerk

*[Signature]*

D. C.

**J. K. TIMMONS & ASSOCIATES**  
 CIVIL ENGINEERS & SURVEYORS  
 1314 W. MAIN ST. RICHMOND, VA.

DATE - Nov. 2, 1967 SCALE: 1" = 200'

DRAWN BY - *ELA*

CHECKED BY - *[Signature]*

JOB NO. 207

Rev. 11-16-1967

PREVIOUS JOB NO.