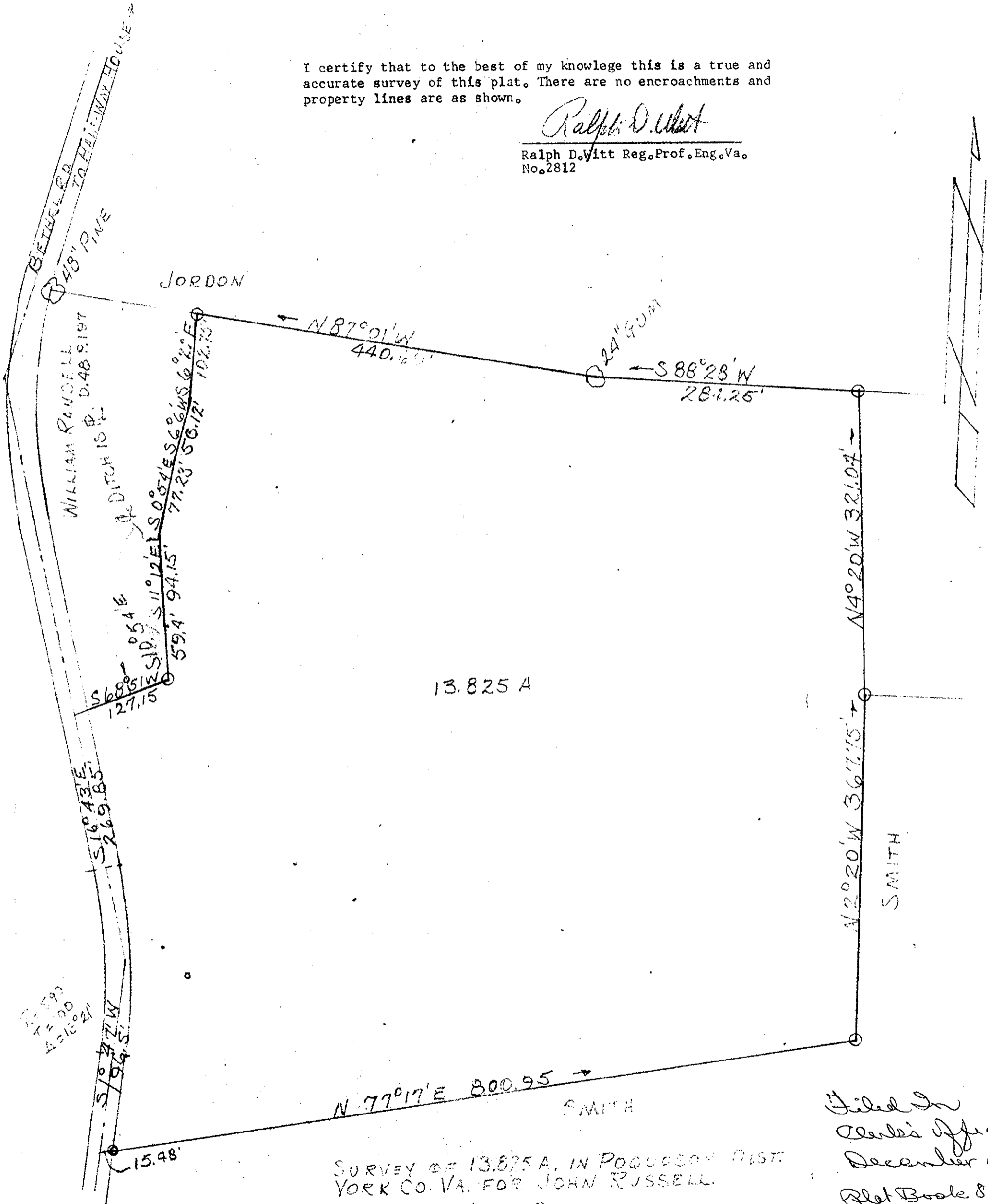


I certify that to the best of my knowledge this is a true and accurate survey of this plat. There are no encroachments and property lines are as shown.

*Ralph D. Witt*

Ralph D. Witt Reg. Prof. Eng. Va. No. 2812



13.825 A

N 77° 17' E 800.95' SMITH

SURVEY OF 13.825 A. IN POCOCKSON DIST. YORK CO. VA. FOR JOHN RUSSELL.

RALPH D. WITT ENGINEER SCALE 1" = 100' JULY 1969

Filed in Clerk's Office December 15, Plat Book 8, Deed Book Page 40