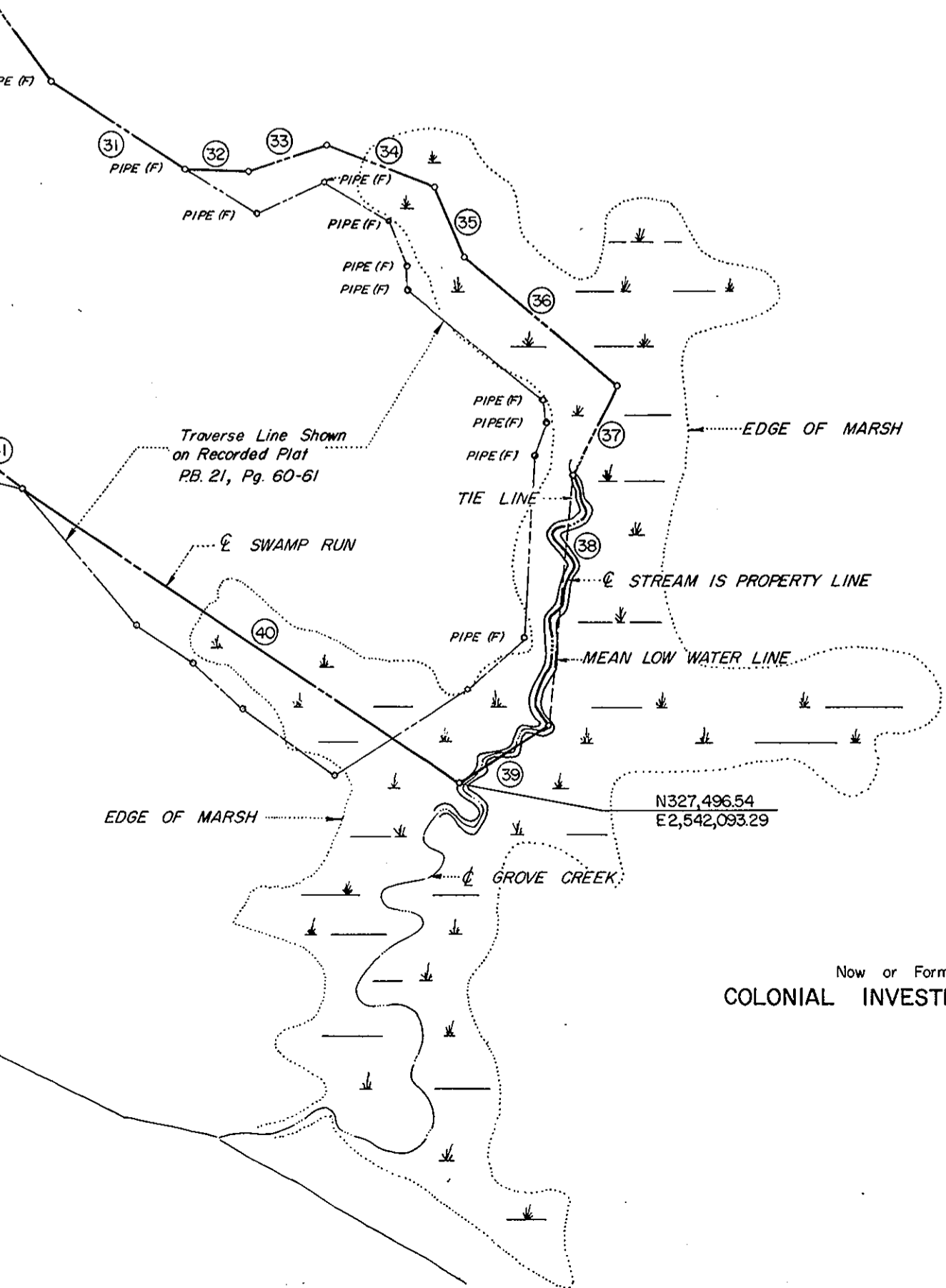


Now or Formerly  
WILLIAM H. FERGUSON, JR.

GROVE CREEK



Now or Formerly  
COLONIAL INVESTMENT, INC.

PROPERTY LINE DATA					
NO.	BEARING	LENGTH	NO.	BEARING	LENGTH
1	S 60°11'37"W	285.39'	61	S 75°44'30"E	1323.88'
2	S 08°25'05"W	173.14'	62	S 76°59'04"E	941.19'
3	S 42°36'54"W	272.27'	63	SEE CURVE TABLE	
4	S 20°35'06"W	17.39'	64	SEE CURVE TABLE	
5	S 17°30'34"W	38.63'	65	S 27°37'36"W	896.82'
6	S 34°41'36"W	198.38'	66	SEE CURVE TABLE	
7	S 06°03'18"W	76.60'	67	S 11°20'24"E	1276.45'
8	S 08°58'48"W	139.99'	68	S 11°20'24"E	424.20'
9	N 75°03'22"W	217.67'	69	S 78°39'36"W	529.99'
10	S 87°45'58"W	104.92'	70	S 11°20'24"E	1818.40'
11	S 70°07'30"W	109.07'	71	S 12°16'36"W	1109.15'
12	N 78°05'19"W	159.65'	72	S 01°43'24"E	179.60'
13	S 75°45'17"W	153.49'	73	S 15°57'38"W	391.73'
14	S 70°21'23"W	100.02'	74	N 70°38'28"W	195.14'
15	S 61°54'33"W	100.82'	75	N 74°58'08"W	765.05'
16	S 67°11'25"W	190.00'	76	N 80°50'09"W	1246.53'
17	S 68°48'48"W	98.37'	77	N 82°29'02"W	608.77'
18	S 78°46'03"W	200.00'	78	N 85°25'46"W	109.79'
19	S 89°02'23"W	156.62'	79	N 12°06'00"W	950.01'
20	S 89°24'43"W	91.91'	80	N 19°52'00"E	258.94'
21	S 87°20'43"W	67.42'	81	N 57°48'40"E	327.15'
22	N 89°27'20"W	23.70'	82	N 52°56'30"E	409.51'
23	S 34°58'09"W	580.26'	83	N 37°25'50"E	259.09'
24	S 30°17'12"W	244.86'	84	N 43°42'40"E	49.89'
25	S 11°05'56"E	239.12'	85	N 45°48'50"E	76.15'
26	S 08°20'37"E	401.12'	86	N 26°42'40"E	131.71'
27	S 03°34'40"W	373.52'	87	N 14°56'10"E	180.98'
28	S 13°17'58"E	633.39'	88	N 08°44'00"W	173.98'
29	S 00°09'47"E	155.81'	89	N 21°41'35"W	79.65'
30	S 21°55'58"E	544.75'	90	N 22°38'20"W	59.58'
31	S 43°08'24"E	464.02'	91	N 11°49'00"W	85.02'
32	S 72°54'34"E	181.43'	92	N 00°58'51"W	99.55'
33	N 86°25'25"E	240.47'	93	N 01°46'30"E	76.85'
34	S 55°08'44"E	341.21'	94	N 01°06'00"W	61.73'
35	S 05°11'40"E	220.91'	95	N 12°24'39"W	39.35'
36	S 36°40'28"E	586.00'	96	N 21°51'50"W	76.66'
37	S 39°04'38"W	280.98'	97	N 22°23'50"W	51.46'
38	S 19°52'51"W	728.13'	98	N 08°48'40"E	96.20'
39	S 70°59'21"W	308.83'	99	N 12°21'40"E	117.20'
40	N 42°01'47"W	1544.95'	100	N 15°32'46"E	87.95'
41	N 38°41'49"W	255.00'	101	N 23°21'30"E	103.08'
42	S 73°30'11"W	150.00'	102	N 07°08'38"E	975.41'
43	N 35°10'16"W	1032.09'	103	N 15°44'10"E	45.08'
44	N 53°29'40"W	1272.35'	104	N 40°42'18"E	4306'
45	S 75°27'04"W	28.95'	105	N 47°45'45"E	85.55'
46	N 11°19'55"W	2036.20'	106	N 53°11'34"E	103.58'
47	N 11°20'24"W	1276.42'	107	N 65°43'12"E	99.42'
48	SEE CURVE TABLE		108	N 79°41'56"E	180.05'
49	N 27°37'36"E	896.82'	109	N 65°58'08"E	190.43'
50	SEE CURVE TABLE		110	N 41°01'01"E	158.73'
51	S 75°44'30"E	965.04'	111	N 29°52'24"E	218.51'
52	S 03°24'24"W	300.00'	112	N 10°17'34"E	237.93'
53	S 03°24'24"W	338.67'	113	N 15°14'51"E	252.48'
54	S 72°16'29"E	224.20'	114	N 14°20'18"E	402.58'
55	S 72°16'29"E	231.22'	115	N 20°02'29"E	117.70'
56	S 72°14'40"E	172.83'	116	N 19°05'42"E	132.70'
57	N 34°35'36"E	110.68'	117	N 26°01'28"E	97.20'
58	N 15°40'52"E	129.75'	118	N 31°01'48"E	155.89'
59	N 15°44'51"E	431.63'	119	N 36°49'29"E	107.36'
60	N 15°44'51"E	0.40'	120	N 35°01'06"E	210.74'
			121	SEE CURVE TABLE	
			122	S 75°44'30"E	1443.68'

CURVE DATA				
NO.	RADIUS	DELTA	TANGENT	LENGTH
48	676.78'	38°58'00"	239.44'	460.28'
50	473.75'	52°07'37"	231.71'	431.01'
63	1884.86'	19°52'05"	330.11'	653.60'
64	573.75'	35°20'16"	182.76'	353.86'
66	776.78'	38°58'00"	274.82'	528.28'
121	597.96'	01°01'54"	5.38'	10.77'

Plat Book No. 8 Page 199

Filed in the Clerk's Office, Circuit Court, York Co., Va.  
the 5th day of January, 1970

Teste:  
MELVILLE I. BRYANT, Clerk  
*Melville I. Bryant*  
D.B. 223, Page 703

NOTE: COORDINATES ARE IN FEET AND REFER TO VIRGINIA STATE GRID, SOUTH ZONE.

REVISED: DECEMBER 29, 1969

PLAT OF PROPERTY OF  
M. W. ABBITT & C. D. WEST, JR.  
YORK COUNTY &  
JAMES CITY COUNTY, VIRGINIA  
TO BE CONVEYED TO  
ANHEUSER-BUSCH, INC.  
SCALE: 1" = 400' DECEMBER 15, 1969  
BALDWIN AND GREGG  
ENGINEERS - SURVEYORS - PLANNERS  
NORFOLK, VIRGINIA