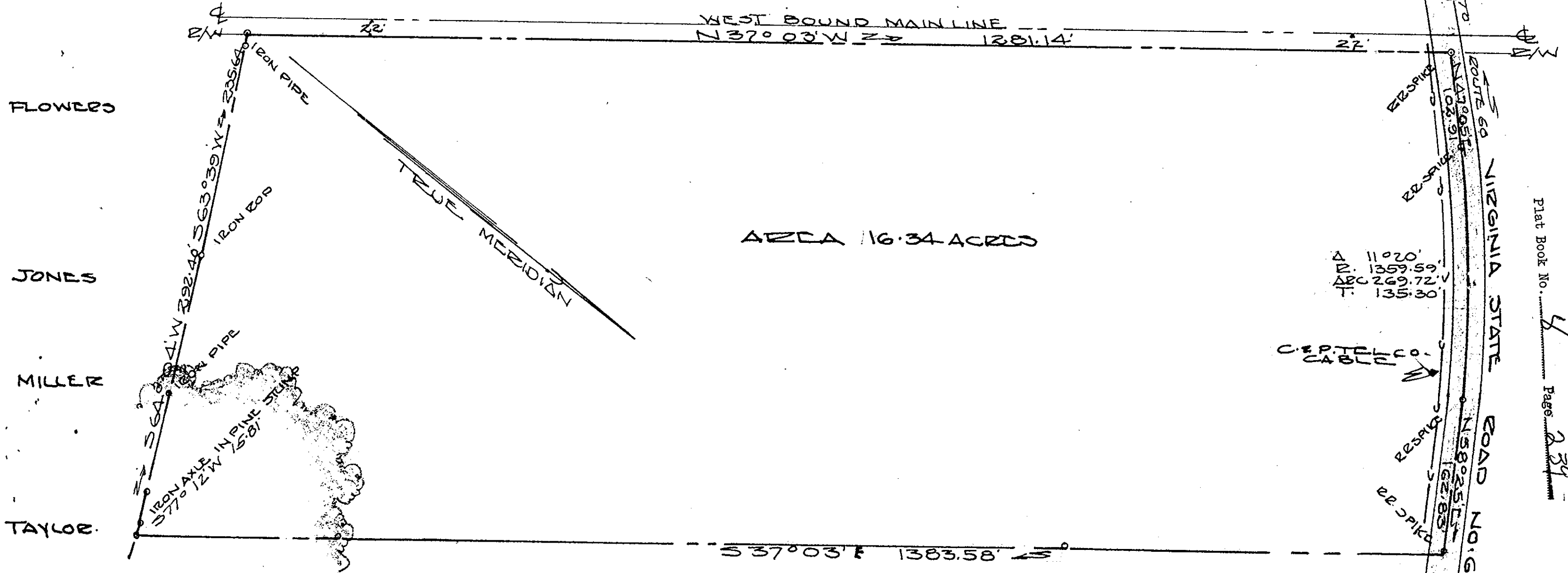


CHESAPEAKE & OHIO RAILWAY



Plat Book No. 4 Page 239

JULIAN I. LEVORSEN

Filed in the Clerk's Office, Circuit Court, York Co., Va.
the 19 day of June 1970

Teste:
Melville I. Bryant, Clerk
D. C.
10. B # 226 of 1962

VINCENT D. McMANUS
WILLIAMSBURG, VIRGINIA
REGISTERED VIRGINIA
LAND SURVEYOR 191
HIGHWAY ENGINEER 191
CIVIL ENGINEER 1920

BRUTON DIST. YORK COUNTY
VIRGINIA
PLAT SHOWING BOUNDARY SURVEY
OF A TRACT OF LAND SURVEYED
FOR
JULIAN I. LEVORSEN ESQ.
SEPT. 30, 1967
RAILWAY R/W, BASED ON EVALUATION SHEET
NO. V2-29 JUNE 16, 1916
SCALE 1" = 100'
7683

Vincent D. McManus C.E.