

BOOK 232 PAGE 284

NOTE: SURVEYED BY A.G. HAROCOPOS & ASSOC.

FROM A TO B BOUNDARY LINES WERE ESTABLISHED BY COENEN THOMAS & ASSOC. PLAT DATED 2/17/60

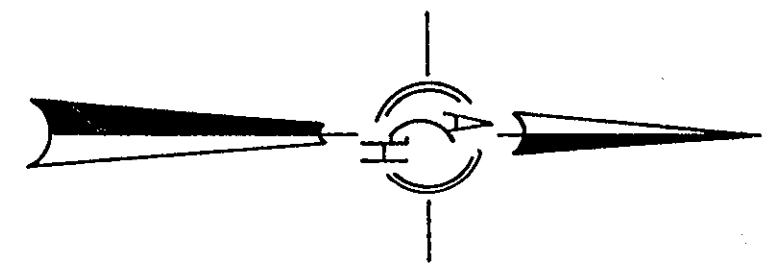
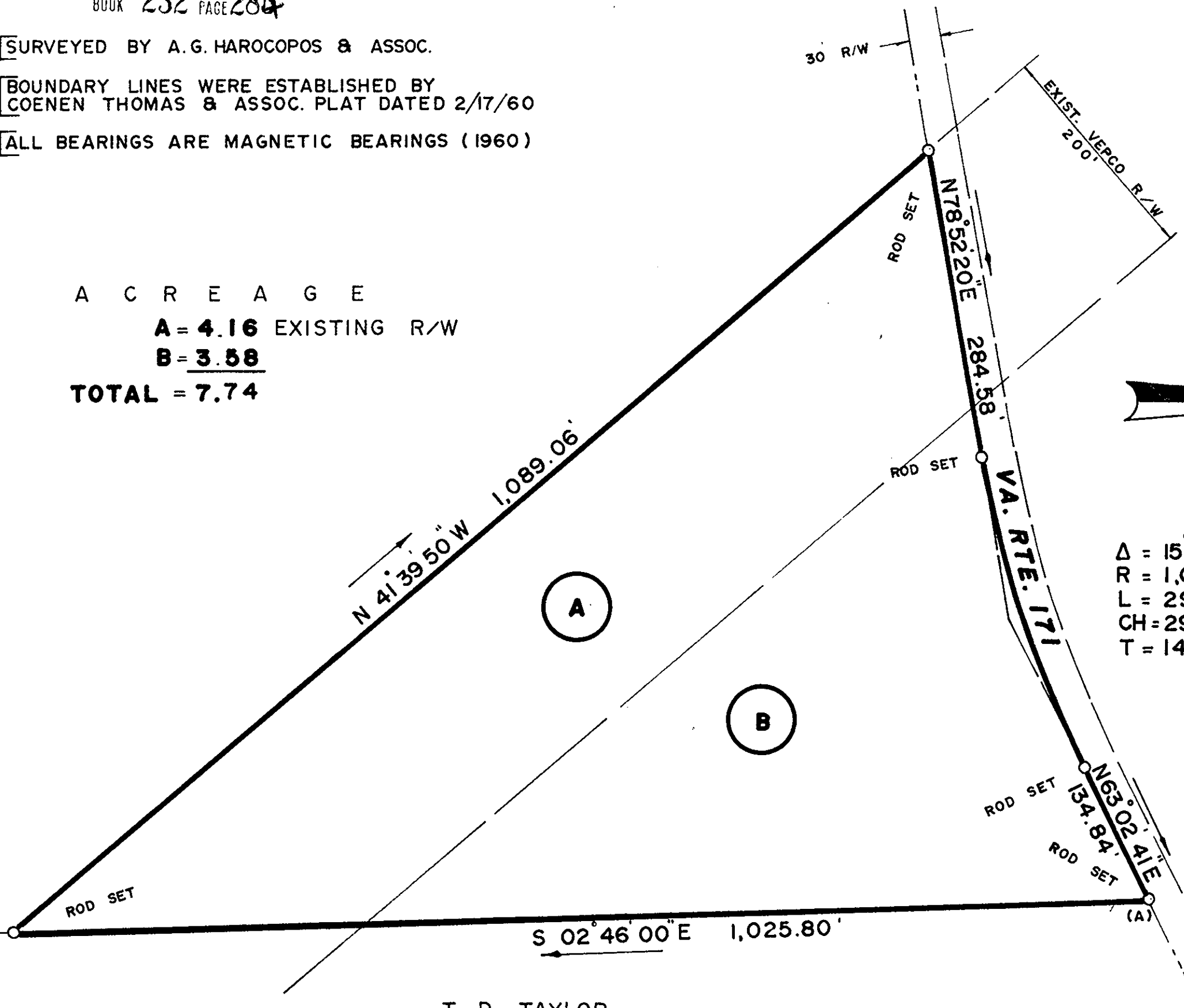
ALL BEARINGS ARE MAGNETIC BEARINGS (1960)

A C R E A G E
A = 4.16 EXISTING R/W
B = 3.58
TOTAL = 7.74

Plat Book No. 8 Page 272

W. B. NEWTON

TWIN OAK (B)



$\Delta = 15^{\circ} 49' 39''$
 $R = 1,056.74'$
 $L = 291.92'$
 $CH = 290.99'$
 $T = 146.90'$



T. D. TAYLOR

2-1203-1

| | | | |
|--|---------------------|-------------------------------|--|
| VIRGINIA ELECTRIC AND POWER CO. | | | |
| TABB SUBSTATION | | | |
| PLAT TO ACCOMPANY DEED FROM GEORGE H. HILL & PEYTON M. HATCHELL, JR. | | | |
| DISTRICT - TOWNSHIP | COUNTY | STATE | |
| BETHEL | YORK | VA. | |
| SCALE: 1 INCH = 100 FT. | | SURVEYED BY A G H & ASSOC. | |
| DRAWN BY J H D | DATE 2 / 17 / 71 | NO. | |

DRAWER NO. SHEET NO.