

RECORD

MERIDIAN

Plat Book No. S Page 304

ROUTE 621  
OLD GRAFTON ROAD  
30' R/W

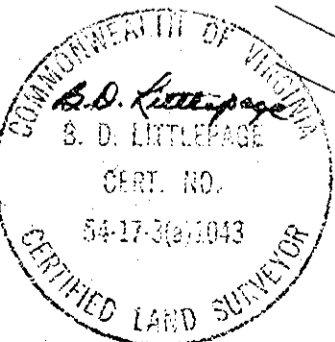
N13°42'11"E  
300.77'

$\Delta = 15^{\circ}02'01''$   
R = 832.00'  
L = 218.31'  
T = 109.78'  
CH. = 217.68'  
CH. BRG. = N6°11'10"E

Tester:

MERVILLE I. BRYANT, Clerk

Filed in the Clerk's Office, Circuit Court, York County, Va.  
the 3rd day of December, 1971



\*REF: DB98/166, 170/168, 76/265

L. V. WOODSON & ASSOCIATES

ENGINEERS & SURVEYORS, P. O. BOX 633

WILLIAMSBURG, VIRGINIA 23185

LEGEND:  $\circ$  = IP = IRON PIN,  $\square$  = MON = MONUMENT, ——— PROPERTY LINE, - - - CENTERLINE, - - - - - EASEMENT LINE

A SURVEY FOR CONVEYANCE - ROBERT E. & GLORIA BENDL TO  
GRAFTON TRAILER COURT, INC., 4.712 ACRES, LYING IN  
GRAFTON DISTRICT, YORK COUNTY, VIRGINIA

SCALE: 1"=60'

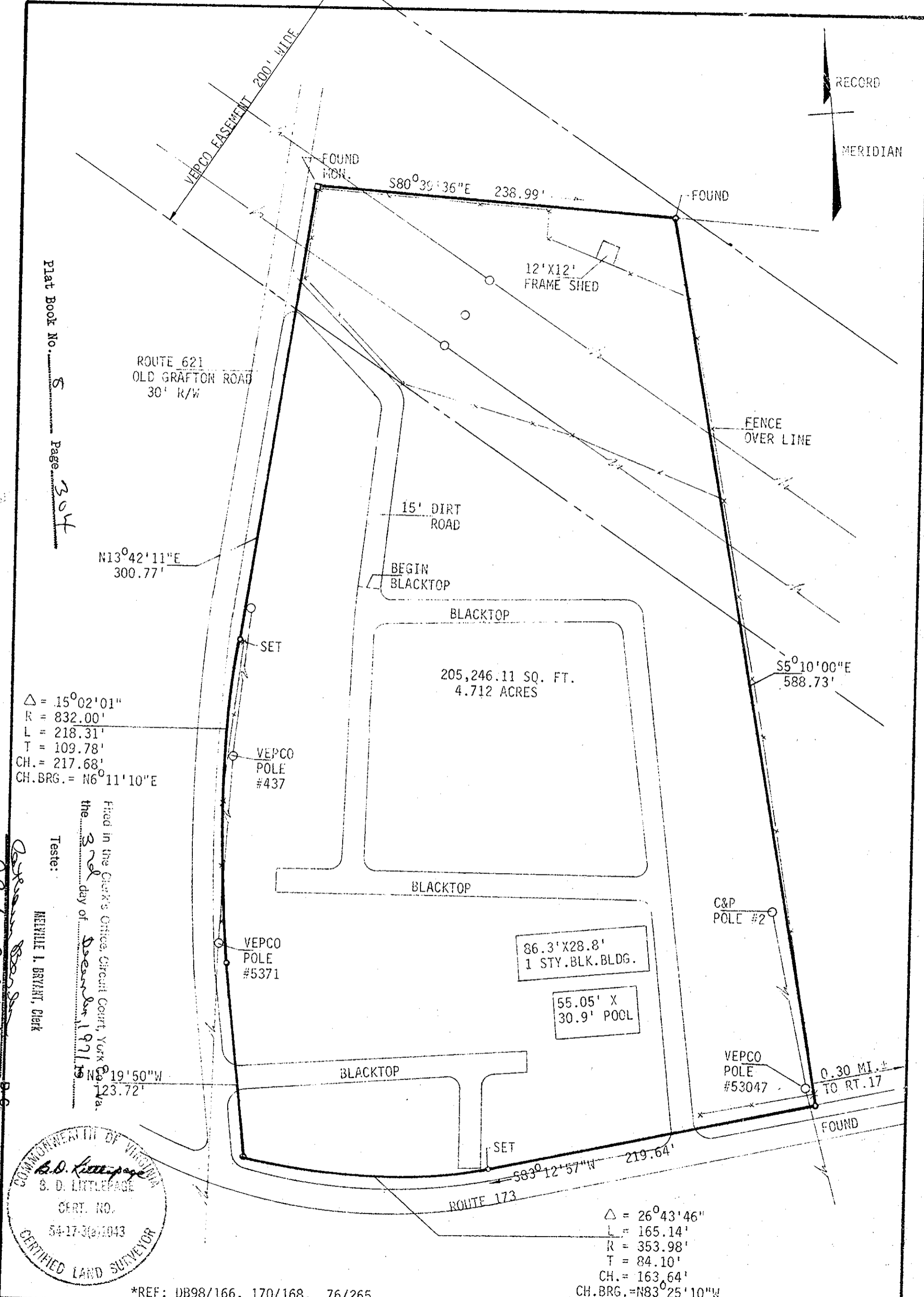
REF: \*

CLOSURE --

J. O. 702

DATE 11/26/71

AREA 4.712 AC.



S80°39'36"E 238.99'

12'X12'  
FRAME SHED

15' DIRT  
ROAD

BEGIN  
BLACKTOP

BLACKTOP

205,246.11 SQ. FT.  
4.712 ACRES

BLACKTOP

86.3'X28.8'  
1 STY. BLK. BLDG.

55.05' X  
30.9' POOL

BLACKTOP

S83°12'57"W 219.64'

ROUTE 173

$\Delta = 26^{\circ}43'46''$   
L = 165.14'  
R = 353.98'  
T = 84.10'  
CH. = 163.64'  
CH. BRG. = N83°25'10"W

VEPCO  
POLE  
#437

VEPCO  
POLE  
#5371

C&P  
POLE #2

VEPCO  
POLE  
#53047

0.30 MI. ±  
TO RT. 17

VEPCO EASEMENT 200' WIDE

FOUND  
MON.

FOUND

FENCE  
OVER LINE

SET

SET

FOUND