

VICINITY MAP
SCALE: 1" = 2000'

CURVE DATA TABLE						
NO.	DELTA	RADIUS	TANGENT	ARC	CHORD	CHD. BEARING
A	90°00'00"	25.00'	25.00'	39.36'	35.44'	N66°52'00"E
B	89°52'00"	25.00'	24.94'	39.31'	35.40'	S23°12'00"E
C	90°08'00"	25.00'	25.06'	39.33'	35.40'	S66°56'00"W
D	90°00'00"	25.00'	25.00'	39.27'	35.36'	N23°08'00"W
E	89°52'00"	25.00'	24.94'	39.21'	35.31'	S23°12'00"E
F	101°06'44"	53.58'	65.12'	94.55'	82.75'	N7°41'20"E

SUBDIVISION PLAT
SECTION TWO
SPRINGFIELD TERRACE

SPRING LAND CORP., OWNERS & DEVELOPERS
BEING LOCATED AT END OF SPRINGFIELD DRIVE
BRUTON DISTRICT, YORK COUNTY, VIRGINIA

SCALE: 1" = 100' NOVEMBER 30, 1970

S. J. GLASS AND ASSOCIATES
ENGINEERING SERVICES --- HAMPTON, VIRGINIA

TITLE TO THE LAND BEING SUBDIVIDED AS SHOWN HEREON IS VESTED IN SPRING LAND CORP., BY DEED FROM EZEKIEL AND ETTA T. LEE, RECORDED IN DEED BOOK 187, PAGE 238, IN THE CLERK'S OFFICE OF THE CIRCUIT COURT OF YORK COUNTY, VIRGINIA.

THIS PLAT OF SUBDIVISION, INCLUDING THE DEDICATION OF STREETS, IS WITH THE FREE CONSENT AND IN ACCORDANCE WITH THE DESIRES OF THE UNDERSIGNED OWNERS.

SPRING LAND CORP.
BY: *[Signature]*
PRESIDENT
ATTEST: *[Signature]*
SECRETARY

STATE OF VIRGINIA
County of York
I, *[Signature]*, A NOTARY PUBLIC, IN AND FOR THE COUNTY AND STATE AFORESAID, DO HEREBY CERTIFY THAT *[Signature]*

Whose names are signed to the foregoing writing, HAVE ACKNOWLEDGED THE SAME BEFORE ME IN MY COUNTY AND STATE AFORESAID.

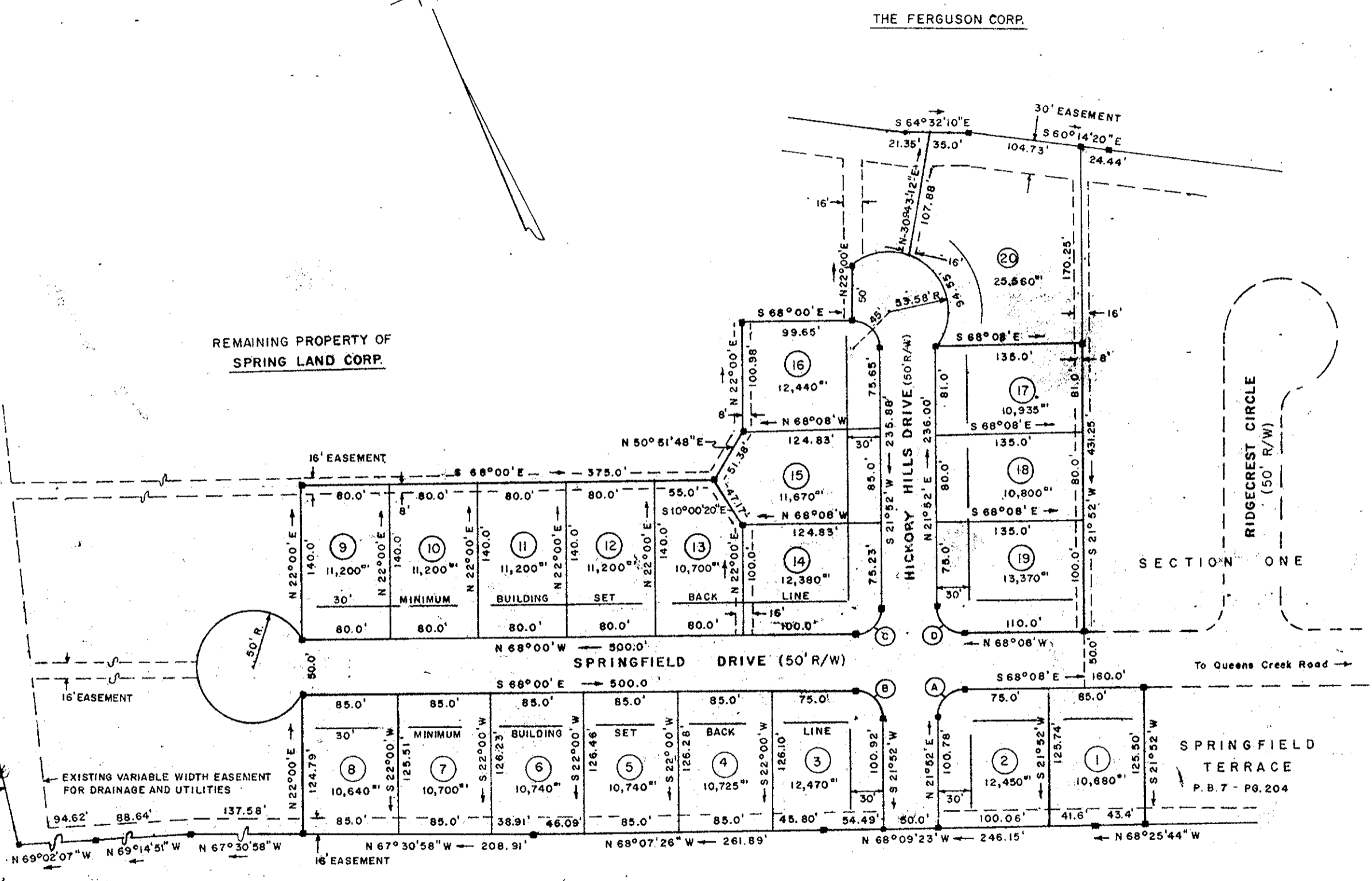
GIVEN UNDER MY HAND THIS 17th DAY OF February, 1970.

[Signature]
NOTARY PUBLIC

MY COMMISSION EXPIRES ON THE 16th DAY OF July, 1972.

STATE OF VIRGINIA: COUNTY OF YORK, TO WIT: IN THE CLERK'S OFFICE OF THE CIRCUIT COURT FOR THE COUNTY OF YORK THIS 23rd DAY OF May, 1972, THIS MAP WAS PRESENTED AND ADMITTED TO RECORD AS THE LAW DIRECTS IN PLAT BOOK 8, PAGE 338

TESTE: *[Signature]*
CLERK
BY: *[Signature]*
DEPUTY CLERK



AREA DEVELOPED IN SUBDIVISION LOTS 5.547 ACRES±
AREA DEDICATED FOR ROAD PURPOSES 1.604 ACRES±
TOTAL AREA DEVELOPED 7.151 ACRES±
LOT AREAS ARE APPROXIMATE.

- INDICATES CONCRETE MONUMENT
- INDICATES IRON PIPE
- INDICATES EASEMENTS FOR DRAINAGE AND PUBLIC UTILITIES
- INDICATES MINIMUM BUILDING SET BACK LINE

TO THE BEST OF MY KNOWLEDGE AND BELIEF THIS SURVEY AND PLAT ARE CORRECT AND ALL REQUIREMENTS OF YORK COUNTY, VIRGINIA RELATING TO THE RECORDATION OF PLATS OF SUBDIVISIONS HAVE BEEN COMPLIED WITH. BOUNDARY CLOSURE ACCURACY IS GREATER THAN 1' IN 10,000.

HAMPTON, VIRGINIA *[Signature]*
CIVIL ENGINEER AND SURVEYOR

DATE: NOVEMBER 30, 1970

VINEYARD HEIGHTS
(UNDEVELOPED)

APPROVED
YORK COUNTY BOARD OF SUPERVISORS
BY: *[Signature]*
PLAT APPROVING AGENT
DATE: 5-10-72
VALUATIONS APPROVED
DATE: