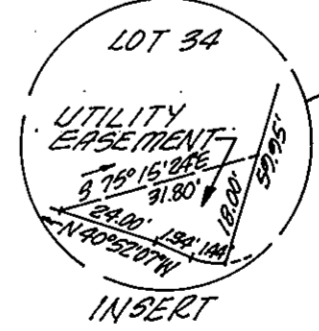
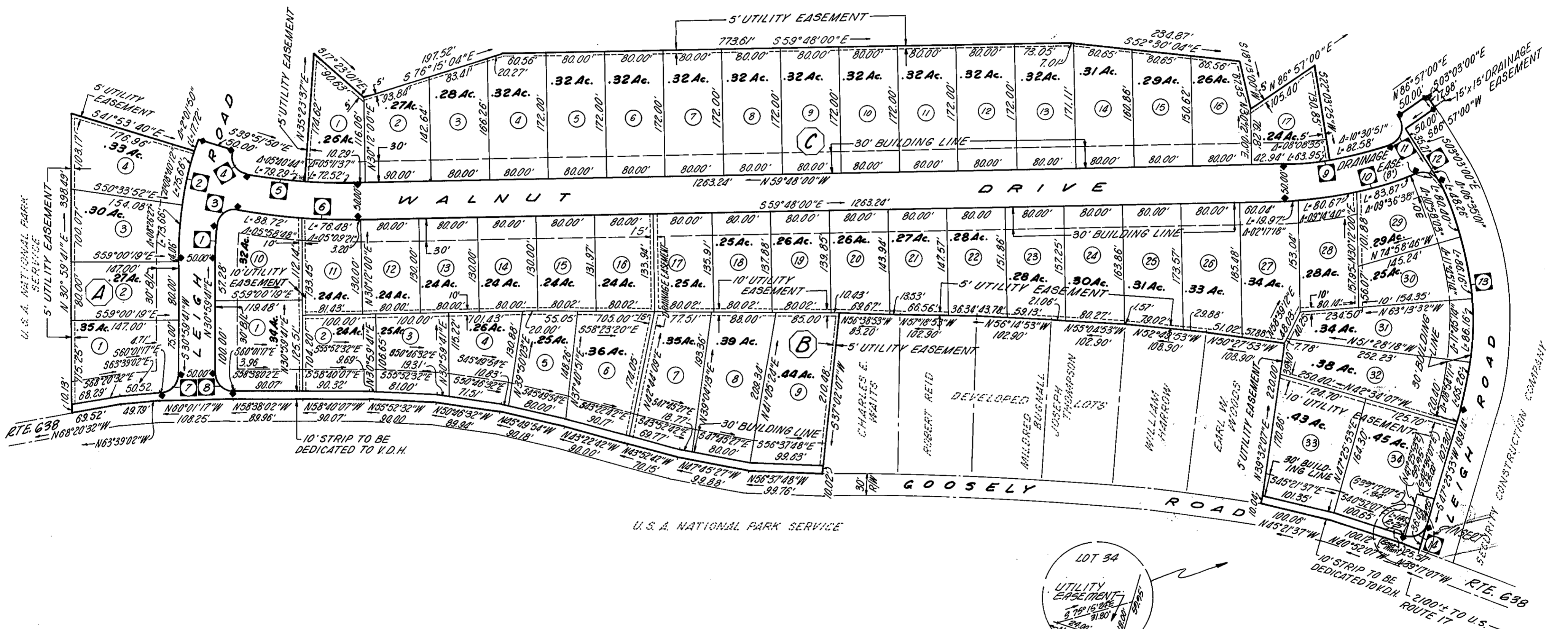


SECURITY CONSTRUCTION COMPANY



CURVE TABLE						
NO.	LENGTH	RADIUS	DELTA	TAN.	L. CHORD	CHD. BRG.
1	44.13'	450.00'	05°37'08"	22.08'	44.11'	N33°48'15"E
2	167.04'	500.00'	19°08'29"	84.31'	160.27'	N40°33'56"E
3	41.33'	25.00'	94°43'20"	27.15'	36.78'	N83°58'29"E
4	43.23'	25.00'	99°03'49"	29.30'	38.04'	N00°36'15"E
5	151.81'	800.00'	10°52'21"	76.13'	151.58'	N54°21'49"W
6	165.20'	850.00'	11°08'09"	82.86'	164.94'	N54°13'55"W
7	38.83'	25.00'	88°59'01"	24.56'	35.04'	N75°29'11"E
8	39.71'	25.00'	91°00'58"	25.45'	35.67'	N14°30'48"W
9	146.53'	450.00'	18°39'26"	73.92'	145.89'	N69°07'43"W
10	184.51'	500.00'	21°08'36"	93.32'	183.47'	N70°22'18"W
11	45.64'	25.00'	104°35'32"	32.34'	39.56'	N49°14'47"E
12	37.09'	25.00'	84°59'47"	22.91'	33.78'	N38°26'43"W
13	370.05'	420.00'	50°28'53"	198.00'	358.19'	N22°11'26"E
14	40.70'	25.00'	83°17'00"	26.48'	36.35'	N85°55'37"W

APPROVED
 YORK COUNTY BOARD OF SUPERVISORS
 BY *William P. Lawrent*
 PLAT APPROVING AGENT.
 DATE 4-10-73
 VARIATIONS APPROVED
 DATE _____
 Filed in the Clerk's Office, Circuit Court, York Co., Va.
 the 10th day of April, 1973
 Teste: _____
 MELVILLE I. BRYANT, Clerk
Edithly Echell D.C.

RINGS COURT

SECTION "A"
 YORK COUNTY, VIRGINIA

PREPARED BY
 AMERICAN ENGINEERS RICHMOND, VIRGINIA
 WILLIAM F. CLARK, JR., C.L.S.

DATE: NOV. 29, 1972
 J.M. 7221-D

SCALE: 1/2" = 100'
 FN. 340