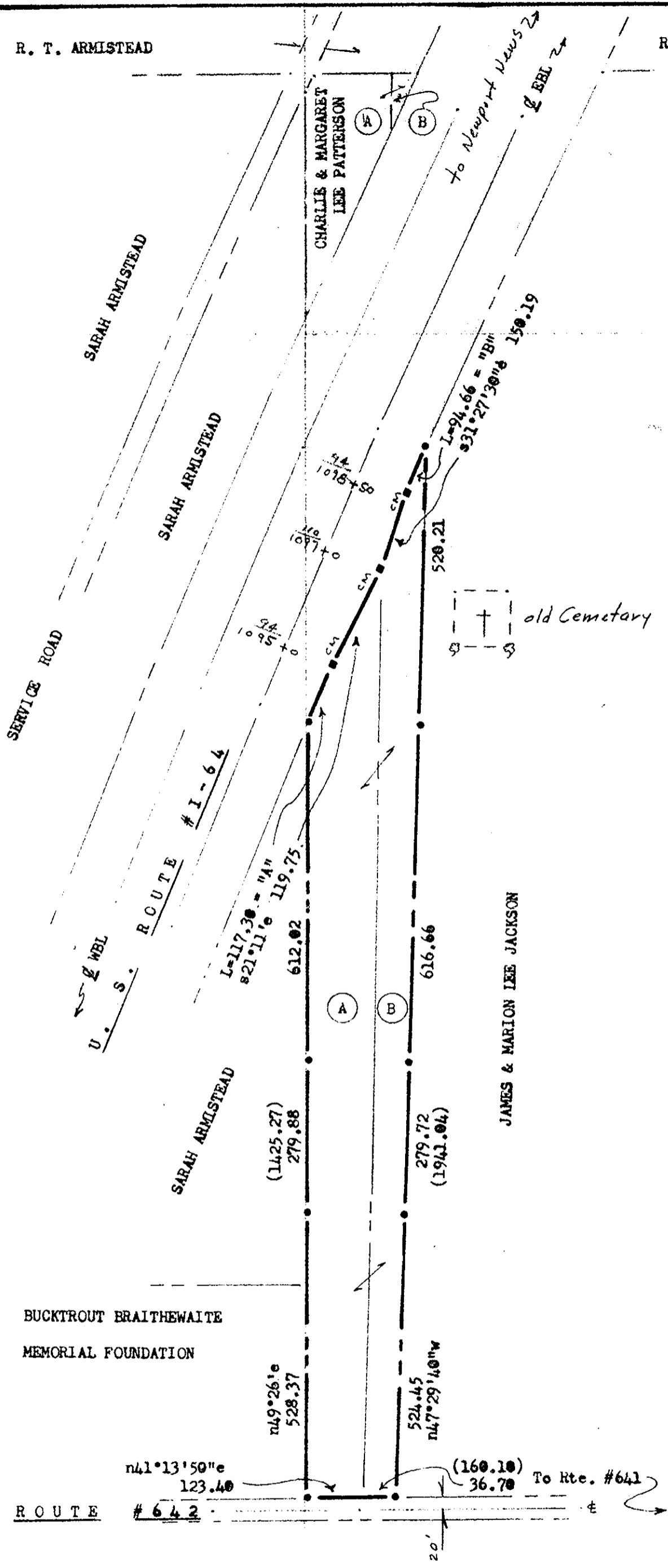


R. T. ARMISTEAD

R. T. ARMISTEAD



Stephen Stephens

NOTE: Iron markers at all corners, except as noted. Bearings are clockwise.

Ref.: P.B. # 5, p. #202,3
 D.B. #38, p. #342
 59 570
 65 414

VDH, proj. #0064-099-101,
 R/W201, C502, Cont. #11, Sh. #11.

AREA: 7,218 Acres.

CURVE DATA:
 "A" - R=22824.32, L=117.30, I=000°17'40",
 T= 58.65, C=117.30, CB=s26°10'30"e.
 "B" - R=22824.32, L= 94.66, I=000°14'15",
 T= 47.33, C= 94.66, CB=s25°02'10"e.

BUCKTROUT BRAITHEWAITE
 MEMORIAL FOUNDATION

JAMES & MARION LEE JACKSON

CHARLIE & MARGARET LEE PATTERSON

old Cemetery

20'

PLAT of:

PART of PROPERTY of:

CHARLIE & MARGARET LEE PATTERSON

Scale: 1" = 200'

Mar. 1973

BRUTON DISTRICT, YORK COUNTY, VIRGINIA

filed in the Clerk's Office, Circuit Court, York Co., Va.
 the 5th day of April 1973

Teste:

MELVILLE L. BRYANT, Clerk

Edith M. Elliott D.C.
 P. B. # 8 p. 423