

NOTES

BEARINGS AND DISTANCES SHOWN IN PARENTHESIS () ARE FROM PLAT DATED 5-17-24 RECORDED IN P.B. 3 PG. 6; NOT SURVEYED.

BEARINGS AND DISTANCES SHOWN IN BRACKETS [] ARE FROM PLAT DATED 7-14-45 UNRECORDED; NOT SURVEYED. NEITHER OF THE AFORE PLATS FORM A CLOSED POLYGON.

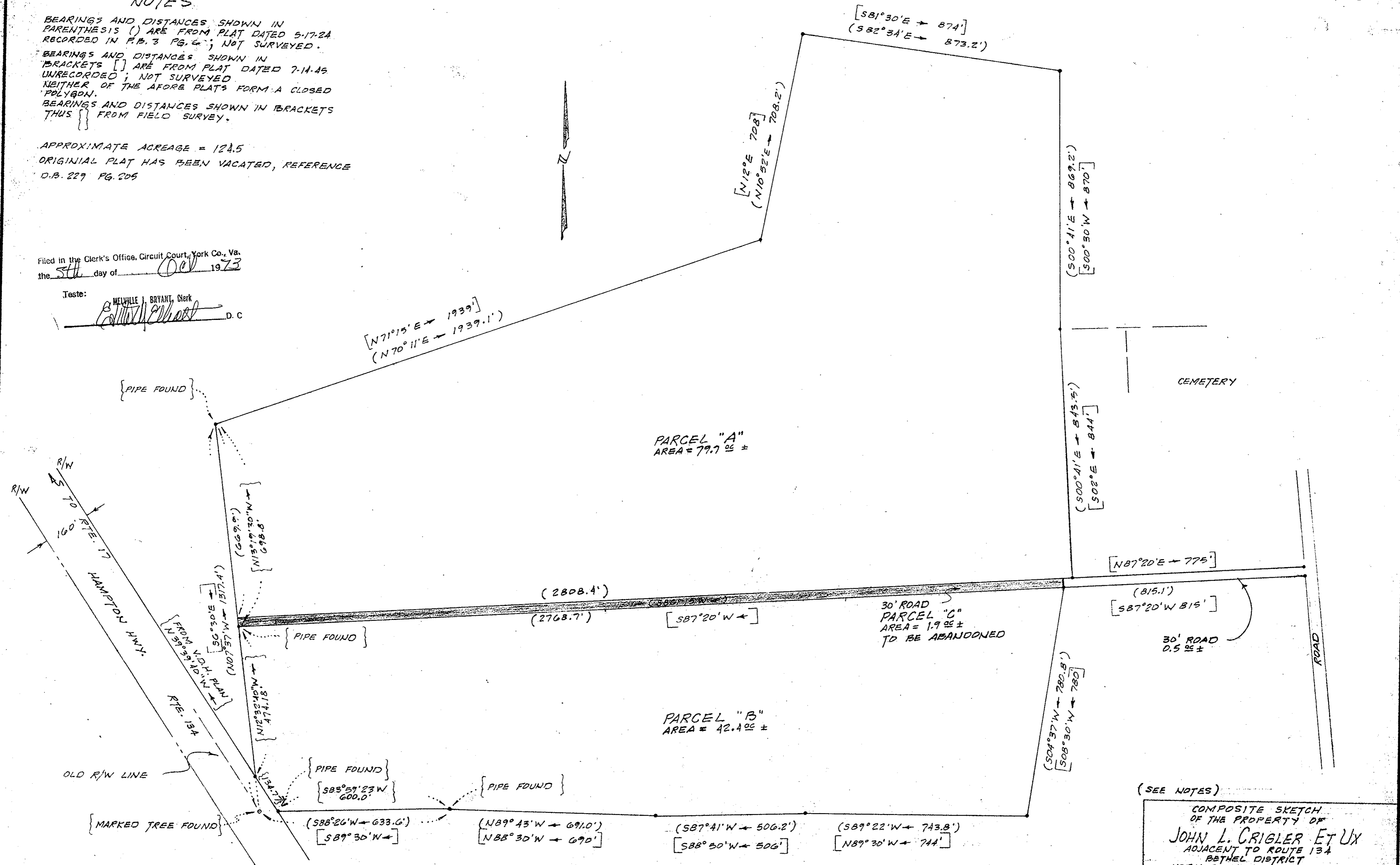
BEARINGS AND DISTANCES SHOWN IN BRACKETS THUS [] FROM FIELD SURVEY.

APPROXIMATE ACREAGE = 124.5

ORIGINAL PLAT HAS BEEN VACATED, REFERENCE D.B. 229 PG. 205

Filed in the Clerk's Office, Circuit Court, York Co., Va. the 5th day of Oct 1973

Teste: MEVILLE BRYANT, Clerk
[Signature] D.C.



(SEE NOTES)

COMPOSITE SKETCH OF THE PROPERTY OF JOHN L. CRIGLER ET UX ADJACENT TO ROUTE 134 BETHEL DISTRICT YORK COUNTY, VIRGINIA

JOHN N. RUTH ... CERTIFIED LAND SURVEYOR HAMPTON, VA.

Scale: 1" = 200' Date: Sept. 2, 1972

REVISED 5-5-73
 DIVIDE PARCEL "C"
 REVISED 11-25-72
 DELETE INTERIOR LOT LINES.
 ADD PARCEL A, B & C NOTES.