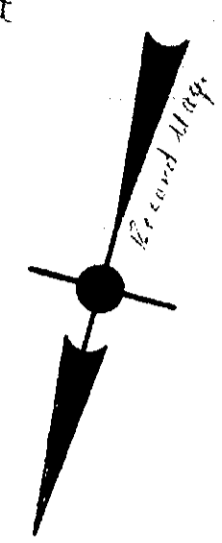


HARTWOOD & SUSIE WRIGHT

THURSTON & ETHEL HANEY
(Also known as: RAINEY)

to old
Richmond
Hemstead



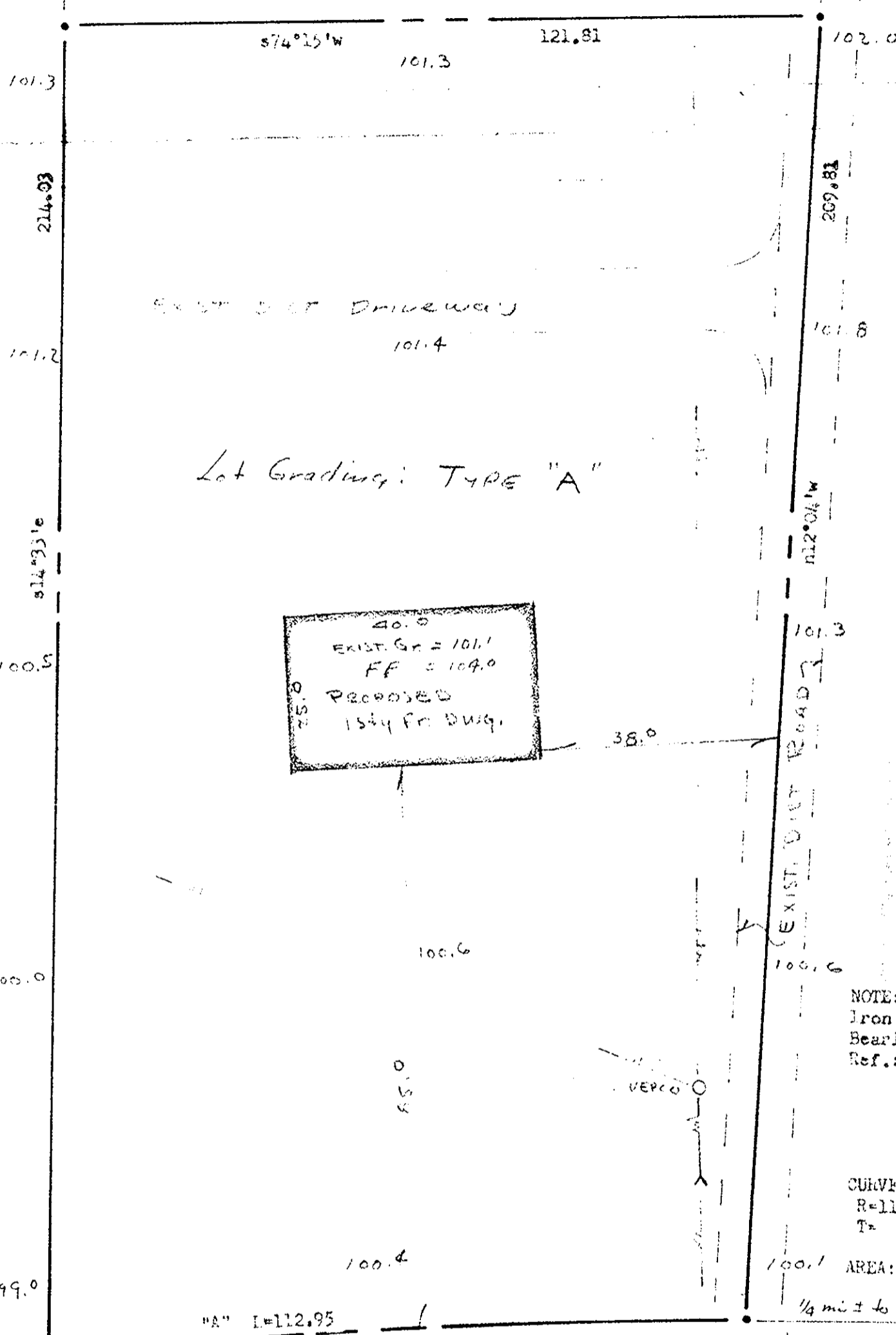
PRESSON & BRANDT



NOTE:
Iron pipes at all corners,
Bearings are clockwise.
Ref.: O.R. # 36, p. #209,
103 258,
122 541,
159 420,
159 422, plat.
VDH P.R. #2, p. #36.
CURVE DATA "A",
R=1170.92, L=112.95, I=05°31'40",
T= 56.52, C=112.91, CB=n71°54'30"e
100.1 AREA: 0.567 Acre.
1/4 mile to Etc. 17 z

Lot Grading: TYPE "A"

40.0
EXIST. Gr = 101.1
FF = 104.0
PROPOSED
1544 Fm DWG.



"A" L=112.95

ROUTE #621 DARE ROAD Variable R/W

Filed in the Clerk's Office, Circuit Court, York Co., Va.
the 11th day of March 1975

Testes
MEVILLE I. BRYANT, Clerk
D.B #274 p. 592

PLAT of PROPERTY
To be conveyed to:
ALMA HANEY
Scale: 1" = 20' Feb. 1975
GRAFTON DISTRICT, YORK COUNTY, VIRGINIA
JOB #1076