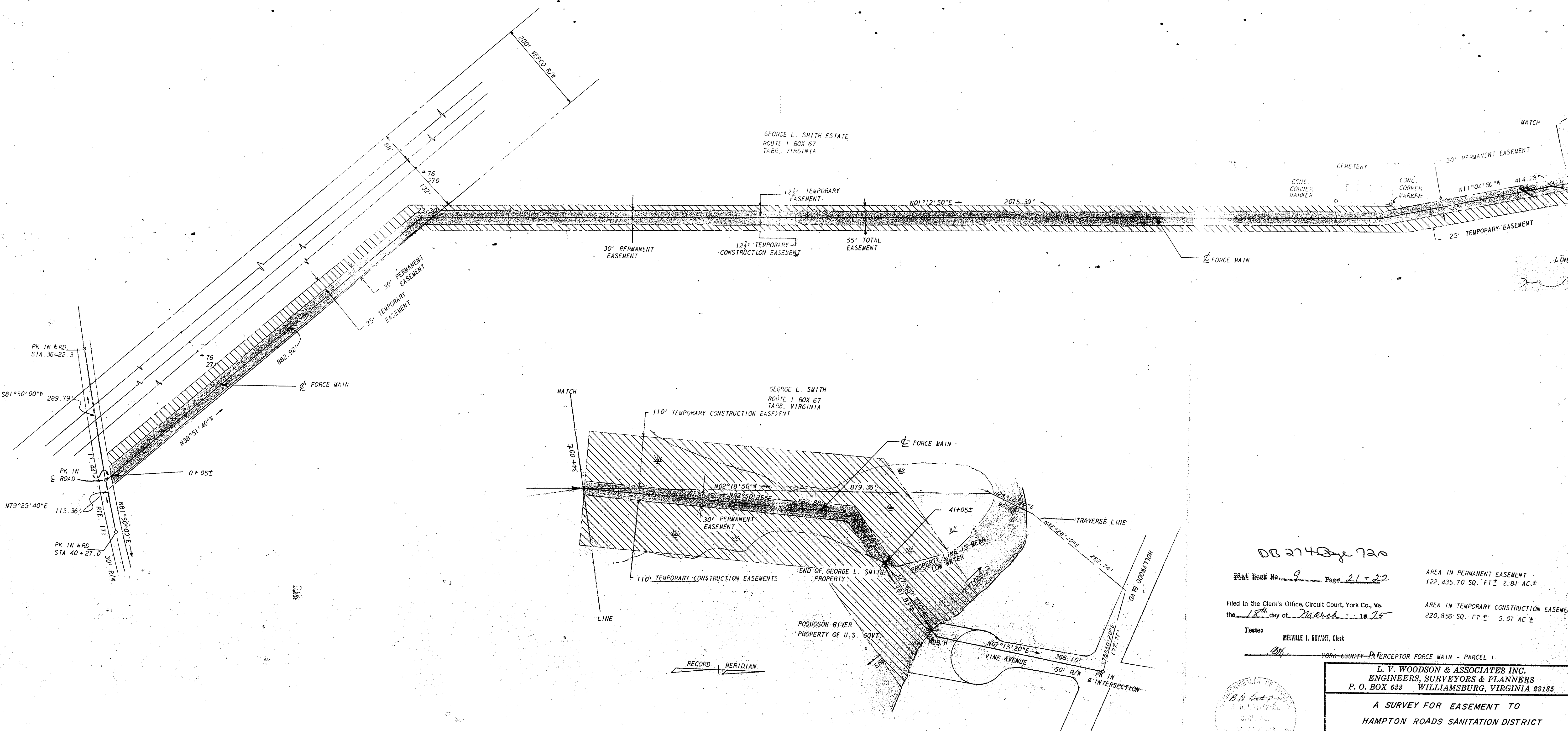


HOLLYWOOD ESTATES  
RECORD MERIDIAN



DB 2740 p 720  
 Plat Book No. 9 Page 21 + 22  
 Filed in the Clerk's Office, Circuit Court, York Co., Va.  
 the 18<sup>th</sup> day of March 1975  
 Tested:  
 MELVILLE I. BRYANT, Clerk  
 YORK COUNTY PERCEPTOR FORCE MAIN - PARCEL 1

AREA IN PERMANENT EASEMENT  
 122,435.70 SQ. FT. ± 2.81 AC. ±  
 AREA IN TEMPORARY CONSTRUCTION EASEMENTS  
 220,856 SQ. FT. ± 5.07 AC. ±



L. V. WOODSON & ASSOCIATES INC.  
 ENGINEERS, SURVEYORS & PLANNERS  
 P. O. BOX 683 WILLIAMSBURG, VIRGINIA 23185

A SURVEY FOR EASEMENT TO  
 HAMPTON ROADS SANITATION DISTRICT  
 FROM GEORGE L. SMITH, ET ALS  
 BETHEL DISTRICT, YORK COUNTY, VIRGINIA

SCALE: 1" = 100'  
 DATE: JULY 13, 1973  
 DWG. 1234-19