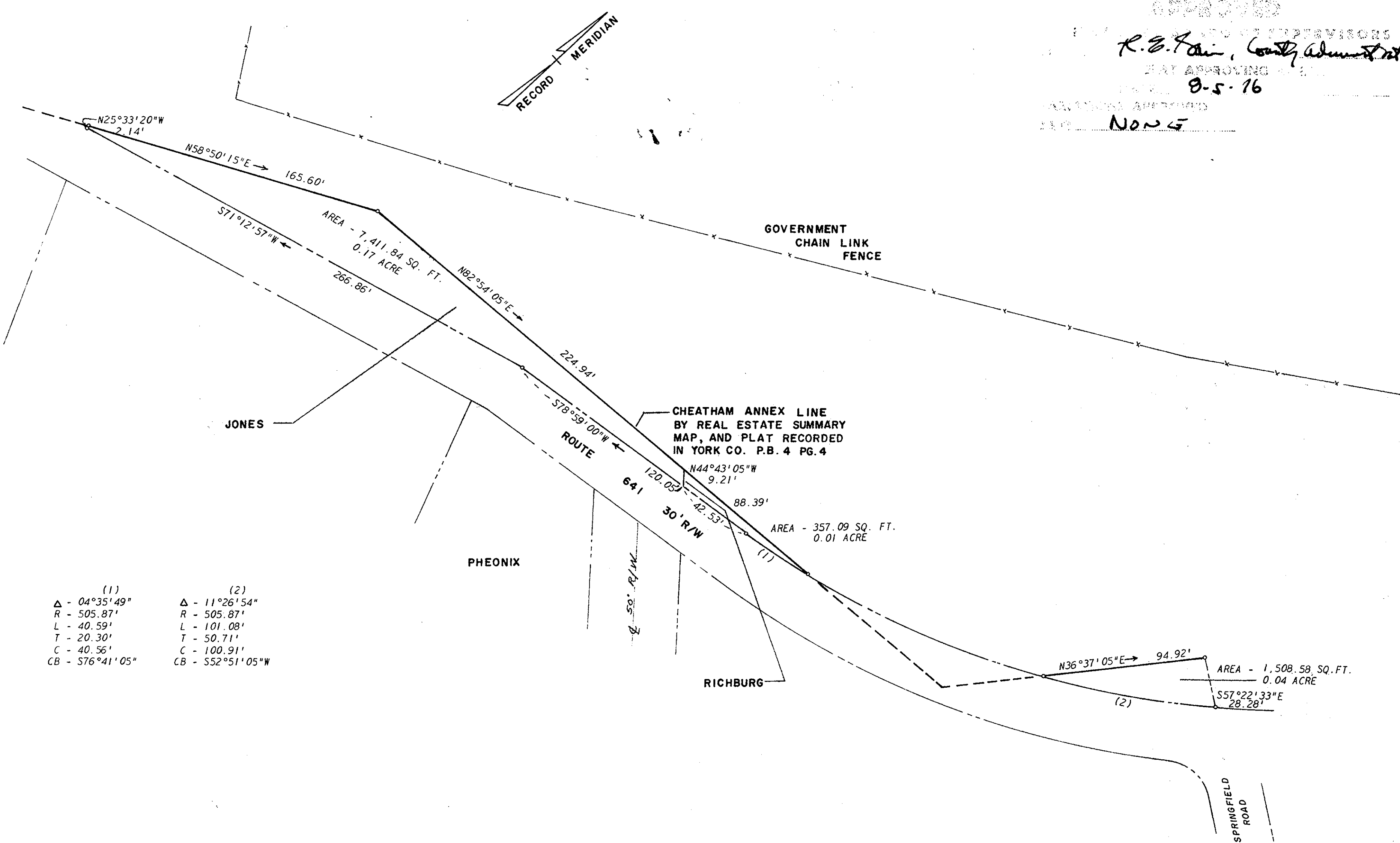


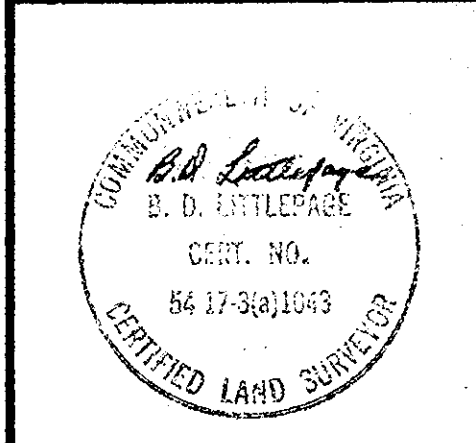
APPROVED
 BOARD OF SUPERVISORS
R. E. Fair, County Administrator
 MAY APPROVING
 DATE 8-5-76
 APPROVED
 NO. 5



- | | |
|-----------------|------------------|
| (1) | (2) |
| Δ - 04°35'49" | Δ - 11°26'54" |
| R - 505.87' | R - 505.87' |
| L - 40.59' | L - 101.08' |
| T - 20.30' | T - 50.71' |
| C - 40.56' | C - 100.91' |
| CB - S76°41'05" | CB - S52°51'05"W |

Plat Book No. 9 Page 88

Filed to the Clerk's Office, Circuit Court, York Co., Va.
 the 5th day of August 1976
 Edith M. Elliott, Clerk
Betty Neusel D.C.



WOODSON, LITTLEPAGE & DeYOUNG, INC.
 ENGINEERS, SURVEYORS & PLANNERS
 P. O. DRAWER FU WILLIAMSBURG, VIRGINIA 23185

A SURVEY OF THE PROPERTY BETWEEN CHEATHAM ANNEX LINE, AS RECORDED IN PLAT BOOK 4, PAGE 4, AND EXISTING 30' RIGHT-OF-WAY LINE OF ROUTE 641, BEGINNING AT CENTERLINE OF SPRINGFIELD ROAD AND EXTENDING TO THE PRESENT LINE OF ISRAEL JONES, LYING IN BRUTON DISTRICT, YORK COUNTY, VIRGINIA.

SCALE: 1" = 40'
 DATE: MAY 11, 1976
 DWG. 2294